

Product datasheet for CR562599

Tissue Total RNA, Lung: left lower lobe

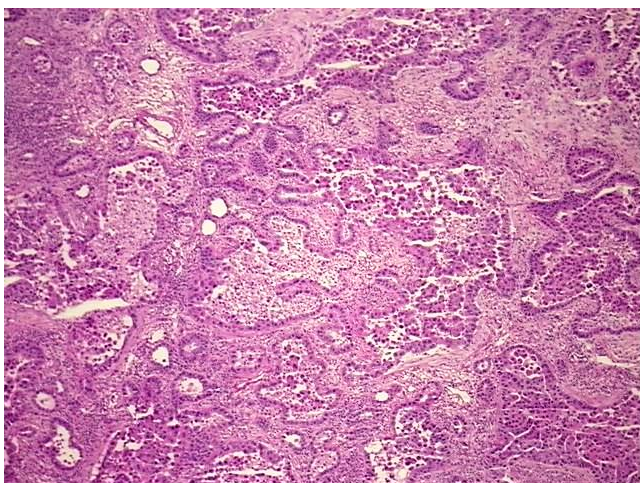
Product data:

Product Type:	Total RNA
Disease State:	Cancer
Diagnosis Category:	Lung Cancer
Tissue:	Lung
Frozen Sample ID:	FR5B3450C3
Case ID:	CI0000019197
Prep:	1
Vial ID:	RN00003465
Tissue of Origin:	Lung: left lower lobe
Site of Finding:	Lung: left lower lobe
Appearance:	Tumor
Sample Diagnosis (from Pathology Verification):	Adenocarcinoma of lung
Normal:	10%
Lesional:	0%
Tumor:	80%
Tumor Hypo/Acellular Stroma:	5%
Tumor Hypercellular Stroma:	5%
Necrosis:	0%
Bioanalyzer Ratio (28S/18S):	0.61
CASE Diagnosis (from medical center path report):	Adenocarcinoma of lung
Age:	79

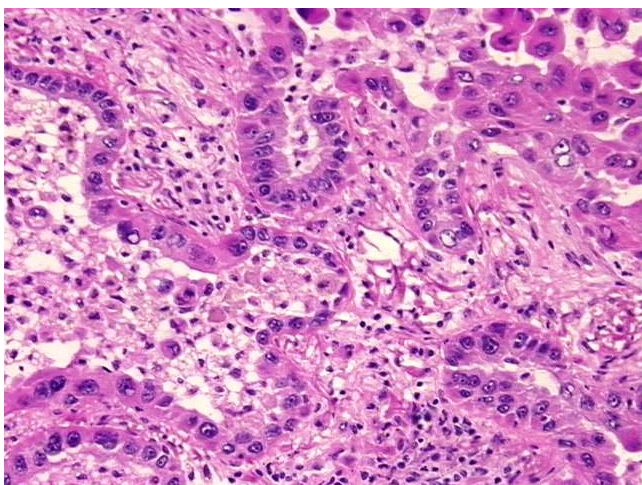


[View online »](#)

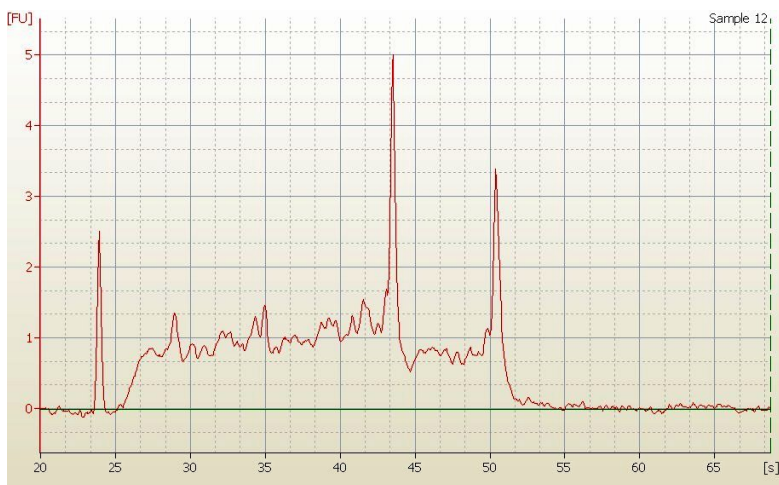
Gender:	Female
Race:	Black or African American
Tumor Grade:	AJCC G3: Poorly differentiated
Minimum Stage Grouping:	IIB
T (Extent of Primary Tumor):	T2
N (Lymph node metastasis):	N1
M (Distant metastasis):	MX
Storage:	Store tissue total RNA at -80°C.
Stability:	These products are stable for one year from date of shipping when stored at -80°C without repeated freeze/thaws.

Product images:

4x Image



20x Image



RNA Electropherogram Image



RNA RT-PCR Image