

## Product datasheet for CR562589

### Tissue Total RNA, Liver: left lobe

#### Product data:

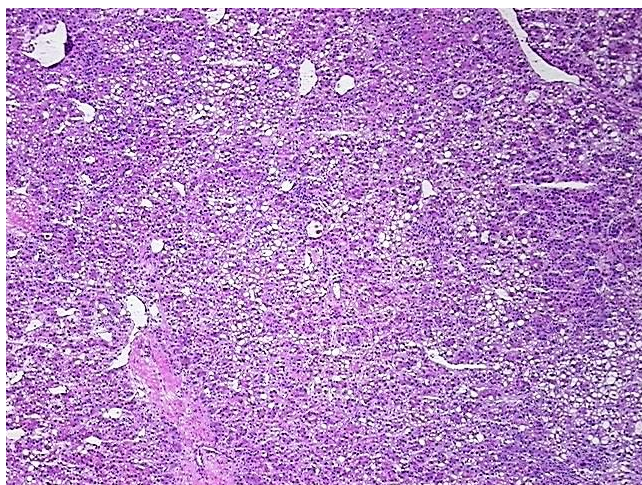
Product Type:	Total RNA
Disease State:	Cancer
Diagnosis Category:	Liver Cancer
Tissue:	Liver
Frozen Sample ID:	FR0004486C
Case ID:	CI0000019288
Prep:	1
Vial ID:	RN00002442
Tissue of Origin:	Liver: left lobe
Site of Finding:	Liver: left lobe
Appearance:	Tumor
Sample Diagnosis (from Pathology Verification):	Carcinoma of liver, hepatocellular
Normal:	0%
Lesional:	0%
Tumor:	80%
Tumor Hypo/Acellular Stroma:	20%
Tumor Hypercellular Stroma:	0%
Necrosis:	0%
Pathology Verification notes from H&E review:	Tumor: prominent cholestasis and pseudorosette formation
Bioanalyzer Ratio (28S/18S):	1.28



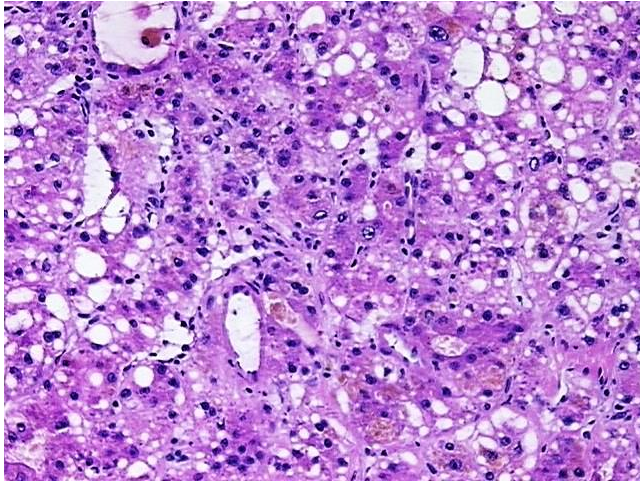
[View online »](#)

<b>CASE Diagnosis (from medical center path report):</b>	Carcinoma of liver, hepatocellular
<b>Age:</b>	79
<b>Gender:</b>	Male
<b>Race:</b>	White or Caucasian
<b>Tumor Grade:</b>	AJCC G2: Moderately differentiated
<b>Minimum Stage Grouping:</b>	I
<b>T (Extent of Primary Tumor):</b>	T1
<b>N (Lymph node metastasis):</b>	NX
<b>M (Distant metastasis):</b>	MX
<b>Diagnostic Test Results:</b>	PAS with diastase ~ Periodic acid-Schiff stain with diastase,Negative; PAS ~ Periodic acid-Schiff stain,Positive; Iron stain, Perls ~ Iron stain, Prussian blue,Negative; CEAp ~ CEA, polyclonal,Positive, focal; Other immunohistochemistry,Positive
<b>Storage:</b>	Store tissue total RNA at -80°C.
<b>Stability:</b>	These products are stable for one year from date of shipping when stored at -80°C without repeated freeze/thaws.

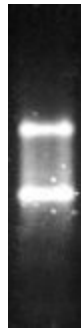
### Product images:



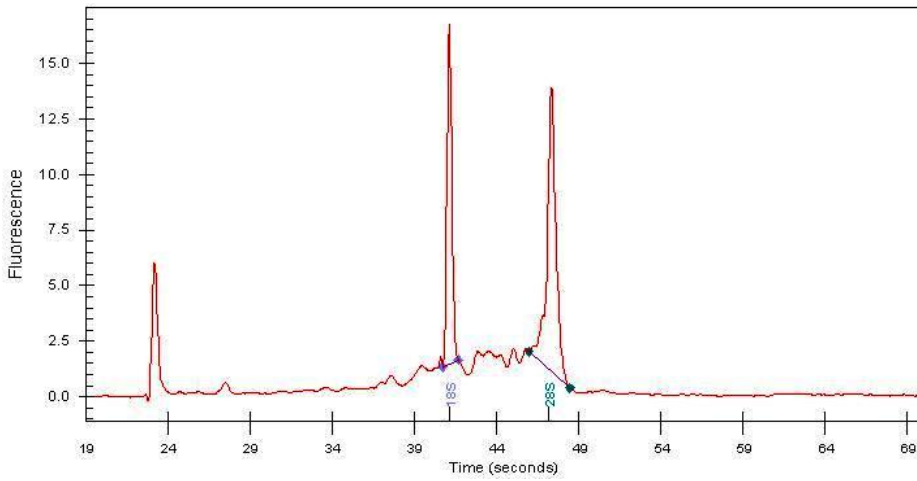
4x Image



20x Image



RNA Gel Image



RNA Electropherogram Image



RNA RT-PCR Image