

## Product datasheet for CR562582

### Tissue Total RNA, Thyroid gland

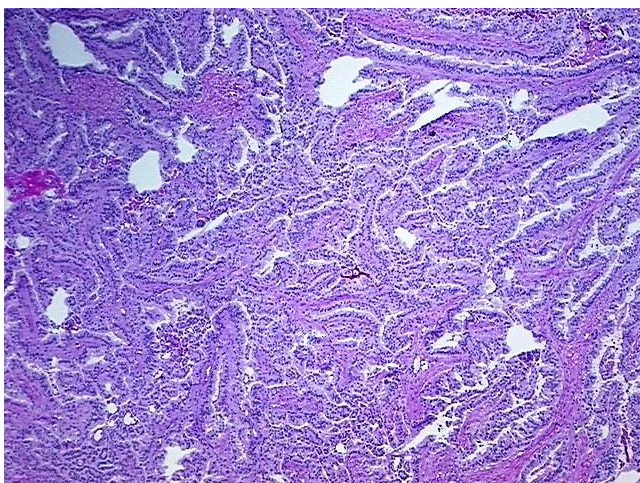
#### Product data:

Product Type:	Total RNA
Disease State:	Cancer
Diagnosis Category:	Thyroid Cancer
Tissue:	Thyroid gland
Frozen Sample ID:	FR00041B1B
Case ID:	CI0000019361
Prep:	1
Vial ID:	RN00002C05
Tissue of Origin:	Thyroid gland
Site of Finding:	Soft tissue
Appearance:	Tumor
Sample Diagnosis (from Pathology Verification):	Carcinoma of thyroid, papillary, metastatic
Normal:	0%
Lesional:	0%
Tumor:	90%
Tumor Hypo/Acellular Stroma:	0%
Tumor Hypercellular Stroma:	9%
Necrosis:	1%
Bioanalyzer Ratio (28S/18S):	0.97
CASE Diagnosis (from medical center path report):	Carcinoma of thyroid, papillary, metastatic
Age:	59

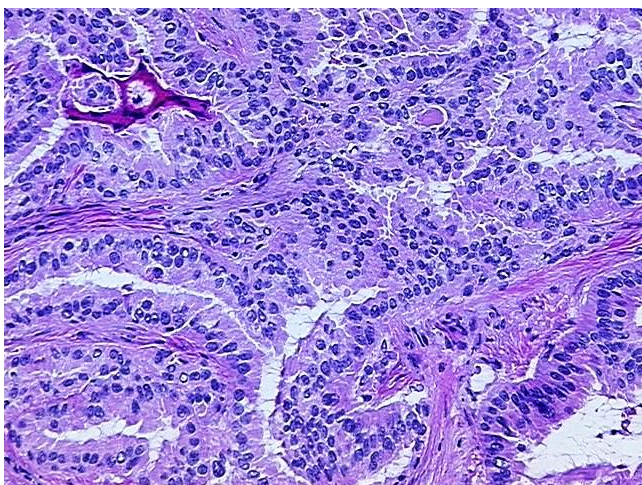


[View online »](#)

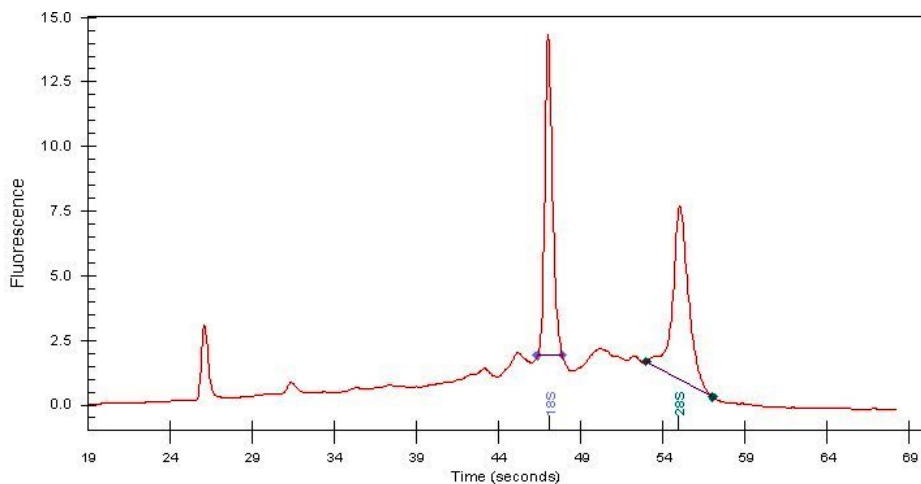
Gender:	Male
Race:	White or Caucasian
Tumor Grade:	Not Reported
Minimum Stage Grouping:	IVA
T (Extent of Primary Tumor):	T4a
N (Lymph node metastasis):	NX
M (Distant metastasis):	MX
Storage:	Store tissue total RNA at -80°C.
Stability:	These products are stable for one year from date of shipping when stored at -80°C without repeated freeze/thaws.

**Product images:**

4x Image



20x Image



RNA Electropherogram Image



RNA RT-PCR Image