

## Product datasheet for CR562571

### Tissue Total RNA, Lung: left lower lobe

#### Product data:

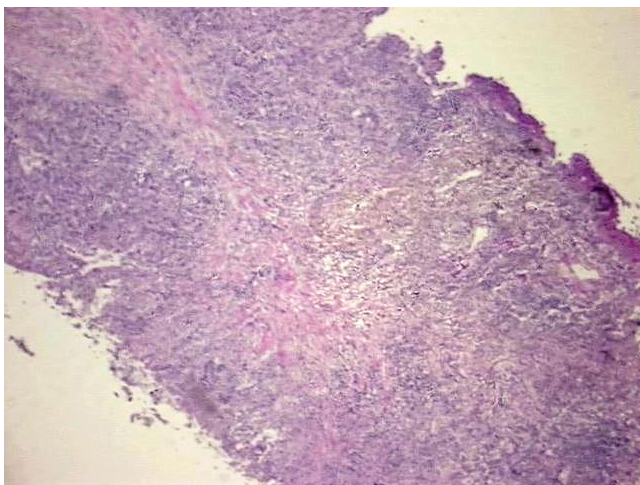
Product Type:	Total RNA
Disease State:	Cancer
Diagnosis Category:	Lung Cancer
Tissue:	Lung
Frozen Sample ID:	FR000466E7
Case ID:	CI0000021312
Prep:	1
Vial ID:	RN00002EF3
Tissue of Origin:	Lung: left lower lobe
Site of Finding:	Lung: left lower lobe
Appearance:	Tumor
Sample Diagnosis (from Pathology Verification):	Adenocarcinoma of lung
Normal:	0%
Lesional:	0%
Tumor:	80%
Tumor Hypo/Acellular Stroma:	10%
Tumor Hypercellular Stroma:	10%
Necrosis:	0%
Bioanalyzer Ratio (28S/18S):	1.23
CASE Diagnosis (from medical center path report):	Adenocarcinoma of lung
Age:	60



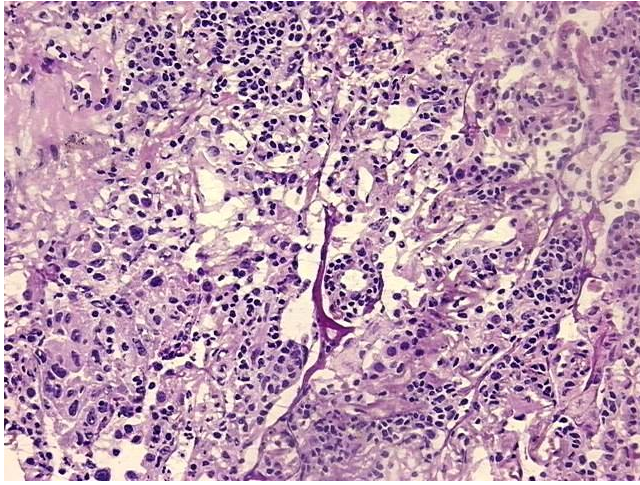
[View online »](#)

Gender:	Male
Race:	White or Caucasian
Tumor Grade:	AJCC G3: Poorly differentiated
Minimum Stage Grouping:	IIIA
T (Extent of Primary Tumor):	T1
N (Lymph node metastasis):	N2
M (Distant metastasis):	MX
Diagnostic Test Results:	Verhoeff-Van Gieson ~ Elastin stain,Pleura not involved; Proliferation index ~ PI,High; ERBB1 ~ EGFR ~ Epidermal growth factor receptor ! by IHC,Positive, strong; DNA ploidy ~ Cell ploidy,Abnormal ploidy; ERBB2,Not amplified; HER2 ~ ERBB2 ~
Storage:	Store tissue total RNA at -80°C.
Stability:	These products are stable for one year from date of shipping when stored at -80°C without repeated freeze/thaws.

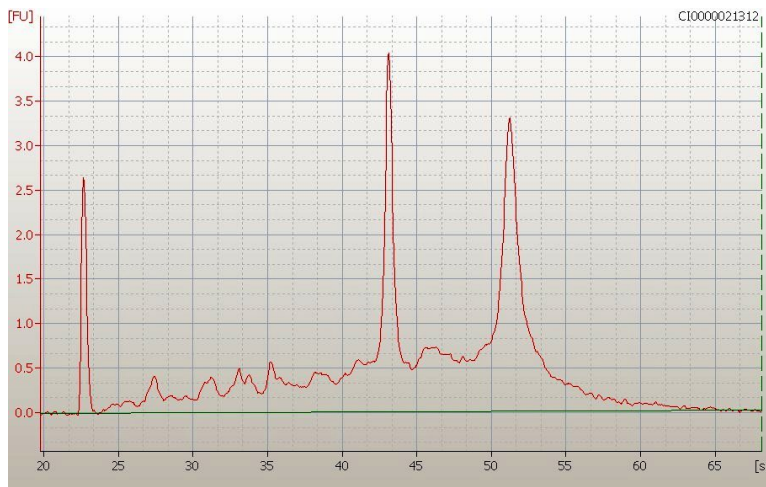
### Product images:



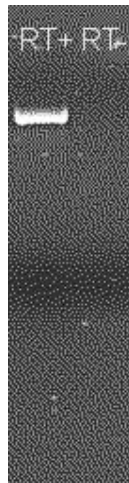
4x Image



20x Image



RNA Electropherogram Image



RNA RT-PCR Image