

Product datasheet for CR562567

Tissue Total RNA, Breast, left

Product data:

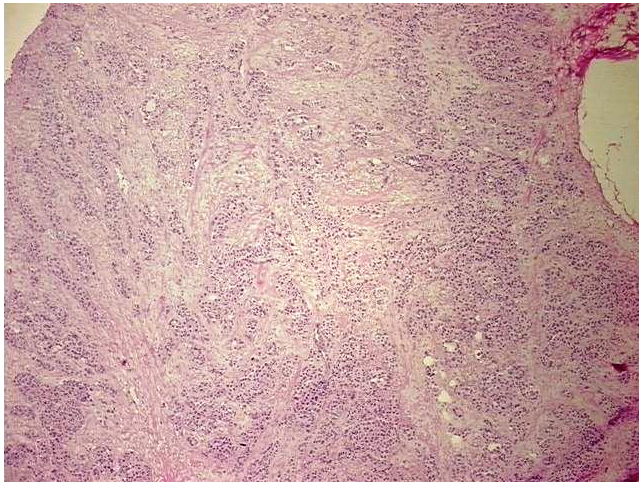
Product Type:	Total RNA
Disease State:	Cancer
Diagnosis Category:	Breast Cancer
Tissue:	Breast
Frozen Sample ID:	FR00046A48
Case ID:	CI0000021380
Prep:	2
Vial ID:	RN00002EAD
Tissue of Origin:	Breast, left
Site of Finding:	Breast, left
Appearance:	Tumor
Sample Diagnosis (from Pathology Verification):	Adenocarcinoma of breast, ductal
Normal:	0%
Lesional:	0%
Tumor:	90%
Tumor Hypo/Acellular Stroma:	5%
Tumor Hypercellular Stroma:	5%
Necrosis:	0%
Bioanalyzer Ratio (28S/18S):	1.75
CASE Diagnosis (from medical center path report):	Adenocarcinoma of breast, ductal
Age:	62



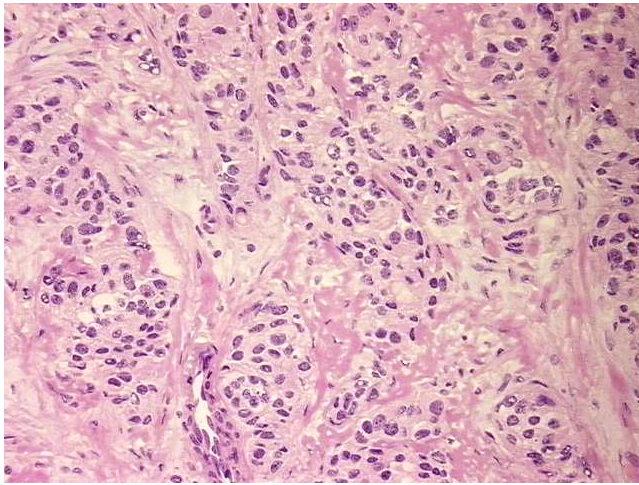
[View online »](#)

Gender:	Female
Race:	Black or African American
Tumor Grade:	Nottingham G2: 6-7 points Intermediate combined grade (moderately favorable)
Minimum Stage Grouping:	I
T (Extent of Primary Tumor):	T1c
N (Lymph node metastasis):	N0 (i-)
M (Distant metastasis):	MX
Diagnostic Test Results:	Progesterone receptor ~ PR ! by IHC,Positive, weak; Estrogen receptor ~ ER ! by IHC,Positive, strong; HER2 ~ ERBB2 ~ Neu ! by IHC,Negative
Storage:	Store tissue total RNA at -80°C.
Stability:	These products are stable for one year from date of shipping when stored at -80°C without repeated freeze/thaws.

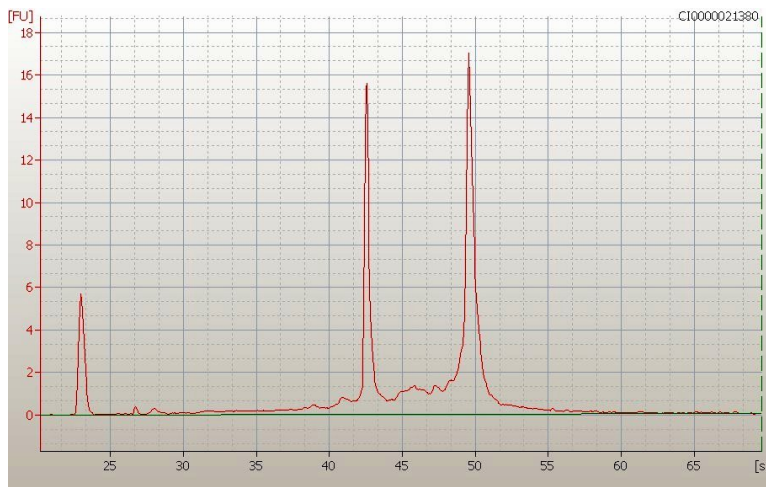
Product images:



4x Image



20x Image



RNA Electropherogram Image



RNA RT-PCR Image