

## Product datasheet for **CR562539**

### Tissue Total RNA, Skin

#### Product data:

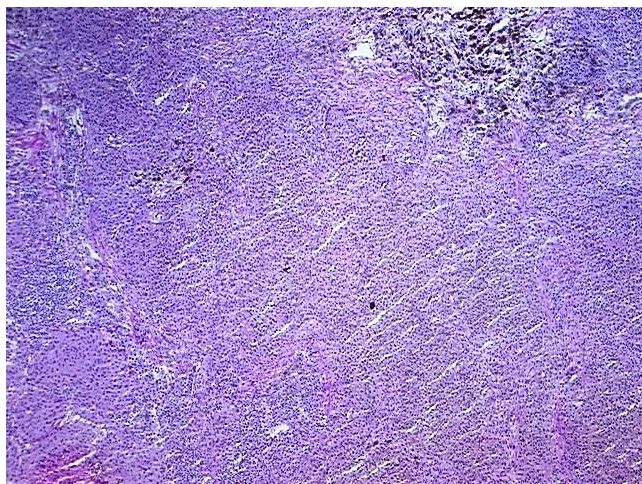
Product Type:	Total RNA
Disease State:	Cancer
Diagnosis Category:	Melanoma
Tissue:	Skin
Frozen Sample ID:	FR00046CAB
Case ID:	CI0000020941
Prep:	1
Vial ID:	RN00003CEF
Tissue of Origin:	Skin
Site of Finding:	Lung
Appearance:	Tumor
Sample Diagnosis (from Pathology Verification):	Malignant melanoma, metastatic
Normal:	10%
Lesional:	0%
Tumor:	75%
Tumor Hypo/Acellular Stroma:	0%
Tumor Hypercellular Stroma:	10%
Necrosis:	5%
Pathology Verification notes from H&E review:	Inflammation: Severe Mixed inflammatory infiltrate
Bioanalyzer Ratio (28S/18S):	1.9



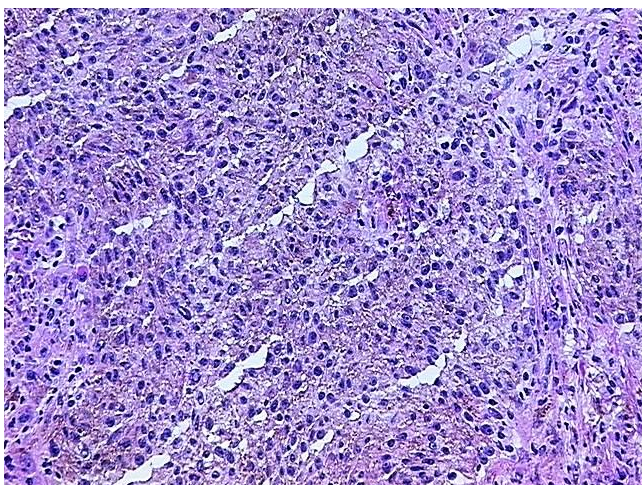
[View online »](#)

<b>CASE Diagnosis (from medical center path report):</b>	Malignant melanoma, metastatic
<b>Age:</b>	69
<b>Gender:</b>	Male
<b>Race:</b>	White or Caucasian
<b>Tumor Grade:</b>	Not Reported
<b>Minimum Stage Grouping:</b>	IV
<b>T (Extent of Primary Tumor):</b>	TX
<b>N (Lymph node metastasis):</b>	NX
<b>M (Distant metastasis):</b>	M1b
<b>Diagnostic Test Results:</b>	Cytokeratin (Pan) ~ Keratin, Pan ! by IHC,Negative; S100 protein,Positive; HMB45 melanoma antigen ~ GP100 ! by IHC,Positive
<b>Storage:</b>	Store tissue total RNA at -80°C.
<b>Stability:</b>	These products are stable for one year from date of shipping when stored at -80°C without repeated freeze/thaws.

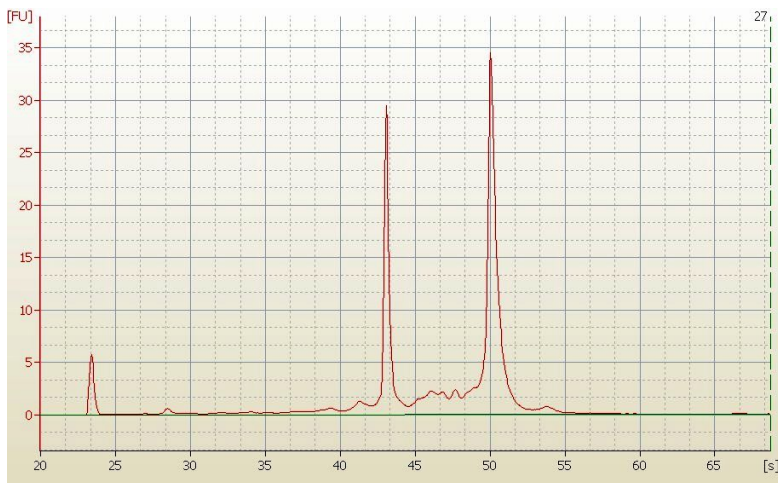
### Product images:



4x Image



20x Image



RNA Electropherogram Image



RNA RT-PCR Image