

## Product datasheet for CR562523

### Tissue Total RNA, Bile duct

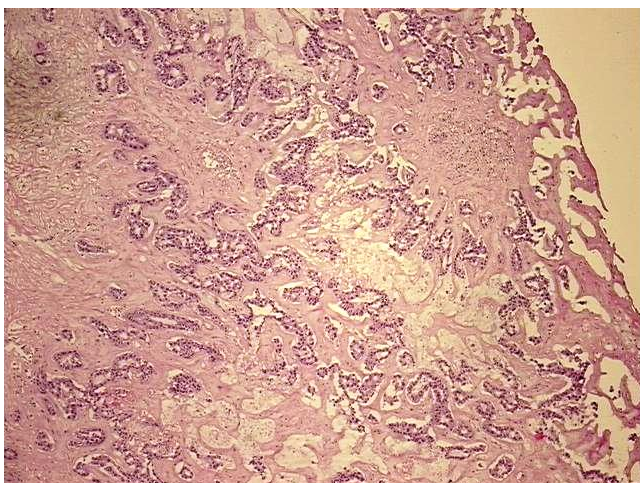
#### Product data:

Product Type:	Total RNA
Disease State:	Cancer
Diagnosis Category:	Liver Cancer
Tissue:	Bile duct
Frozen Sample ID:	FR65EE657D
Case ID:	CI0000018940
Prep:	1
Vial ID:	RN000030B8
Tissue of Origin:	Bile duct
Site of Finding:	Liver
Appearance:	Tumor
Sample Diagnosis (from Pathology Verification):	Cholangiocarcinoma of liver
Normal:	0%
Lesional:	0%
Tumor:	70%
Tumor Hypo/Acellular Stroma:	0%
Tumor Hypercellular Stroma:	10%
Necrosis:	20%
Bioanalyzer Ratio (28S/18S):	1.11
CASE Diagnosis (from medical center path report):	Cholangiocarcinoma of liver
Age:	78

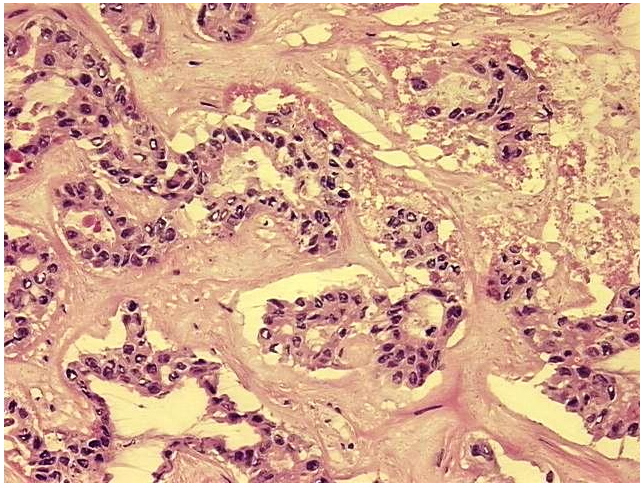


[View online »](#)

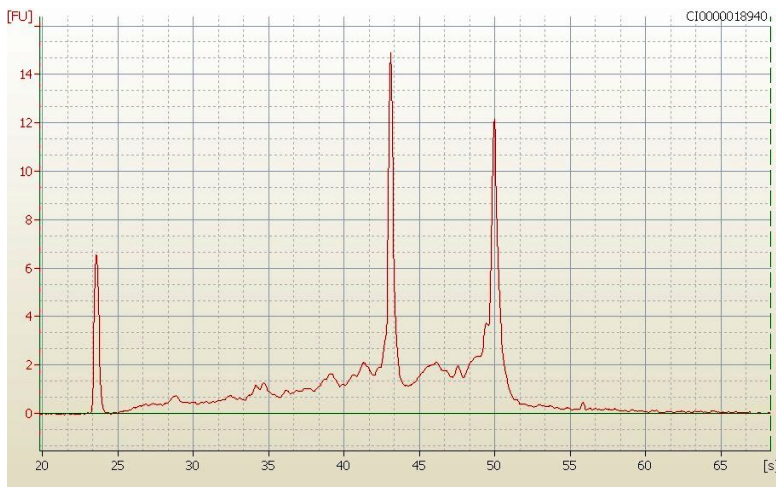
Gender:	Female
Race:	White or Caucasian
Tumor Grade:	AJCC G2: Moderately differentiated
Minimum Stage Grouping:	I
T (Extent of Primary Tumor):	T1
N (Lymph node metastasis):	N0
M (Distant metastasis):	MX
Storage:	Store tissue total RNA at -80°C.
Stability:	These products are stable for one year from date of shipping when stored at -80°C without repeated freeze/thaws.

**Product images:**

4x Image



20x Image



RNA Electropherogram Image



RNA RT-PCR Image