

## Product datasheet for CR562517

### Tissue Total RNA, Breast

#### Product data:

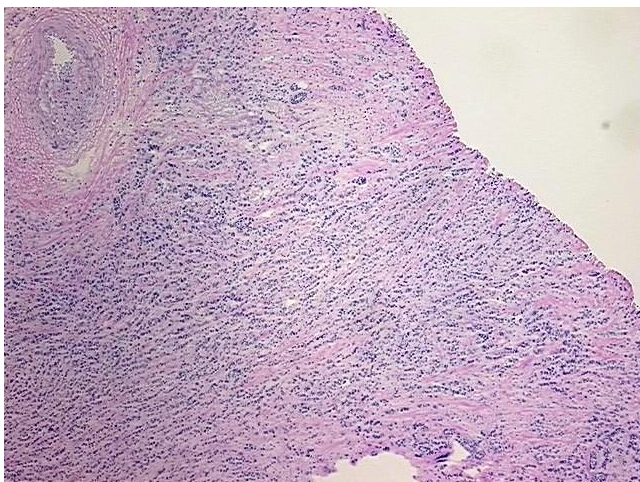
|   |                                   |
|---|-----------------------------------|
| Product Type:                                     | Total RNA                         |
| Disease State:                                    | Cancer                            |
| Diagnosis Category:                               | Breast Cancer                     |
| Tissue:   | Breast                            |
| Frozen Sample ID:                                 | FR0003DDA1                        |
| Case ID:  | CI0000017835                      |
| Prep:   | 1                                 |
| Vial ID:  | RN000037AC                        |
| Tissue of Origin:                                 | Breast                            |
| Site of Finding:                                  | Breast                            |
| Appearance:                                       | Tumor                             |
| Sample Diagnosis (from Pathology Verification):   | Adenocarcinoma of breast, lobular |
| Normal:   | 10%                               |
| Lesional:   | 0%                                |
| Tumor:  | 70%                               |
| Tumor Hypo/Acellular Stroma:                      | 20%                               |
| Tumor Hypercellular Stroma:                       | 0%                                |
| Necrosis:   | 0%                                |
| Bioanalyzer Ratio (28S/18S):                      | 1.66                              |
| CASE Diagnosis (from medical center path report): | Adenocarcinoma of breast, lobular |
| Age:  | 77                                |



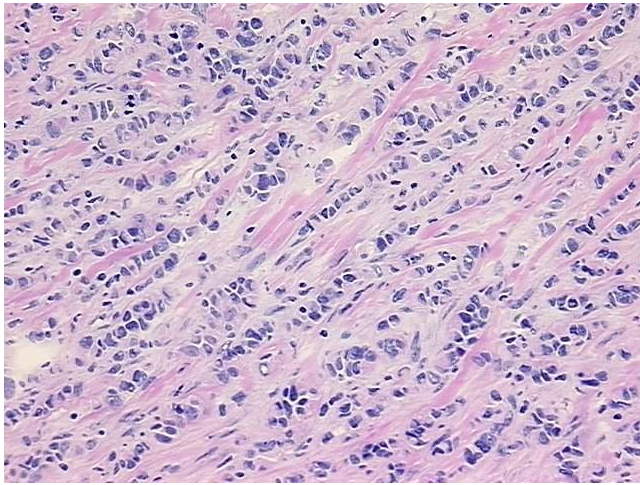
[View online »](#)

|                              |  |
|------------------------------|--|
| Gender:                      | Female   |
| Race:                        | White or Caucasian   |
| Tumor Grade:                 | Nottingham G2: 6-7 points Intermediate combined grade (moderately favorable)   |
| Minimum Stage Grouping:      | IIA  |
| T (Extent of Primary Tumor): | T2   |
| N (Lymph node metastasis):   | N0   |
| M (Distant metastasis):      | MX   |
| Diagnostic Test Results:     | Progesterone receptor ~ PR ! by IHC,Positive; Estrogen receptor ~ ER ! by IHC,Positive; HER2 ~ ERBB2 ~ Neu ! by IHC,Negative |
| Storage:                     | Store tissue total RNA at -80°C.   |
| Stability:                   | These products are stable for one year from date of shipping when stored at -80°C without repeated freeze/thaws.             |

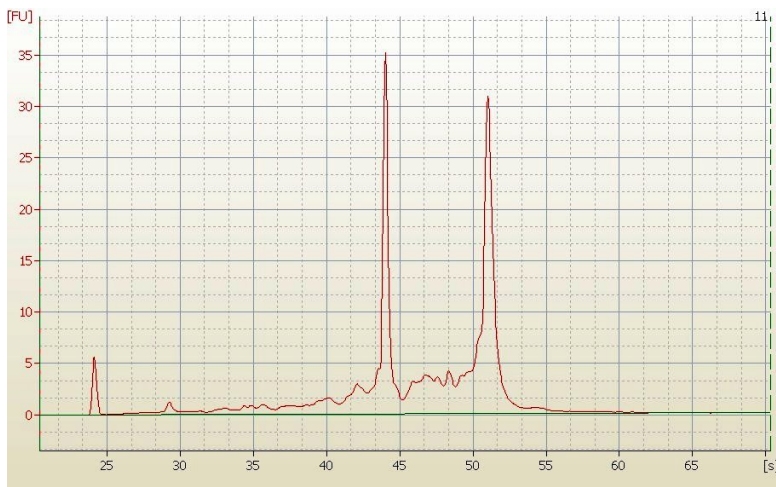
### Product images:



4x Image



20x Image



RNA Electropherogram Image



RNA RT-PCR Image