

Product datasheet for CR562510

Tissue Total RNA, Urinary bladder

Product data:

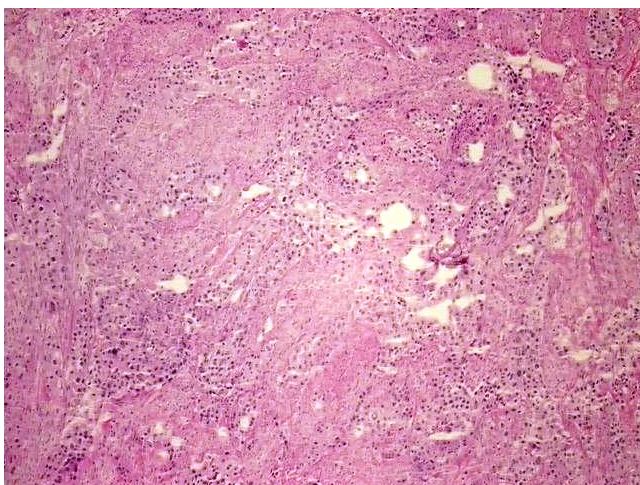
Product Type:	Total RNA
Disease State:	Cancer
Diagnosis Category:	Bladder Cancer
Tissue:	Urinary bladder
Frozen Sample ID:	FR000392FB
Case ID:	CI0000017750
Prep:	1
Vial ID:	RN000032D0
Tissue of Origin:	Urinary bladder
Site of Finding:	Urinary bladder
Appearance:	Tumor
Sample Diagnosis (from Pathology Verification):	Carcinoma of bladder, urothelial
Normal:	45%
Lesional:	0%
Tumor:	50%
Tumor Hypo/Acellular Stroma:	0%
Tumor Hypercellular Stroma:	0%
Necrosis:	5%
Pathology Verification notes from H&E review:	Non Tumor Structures: 100% Muscle
Bioanalyzer Ratio (28S/18S):	1.47



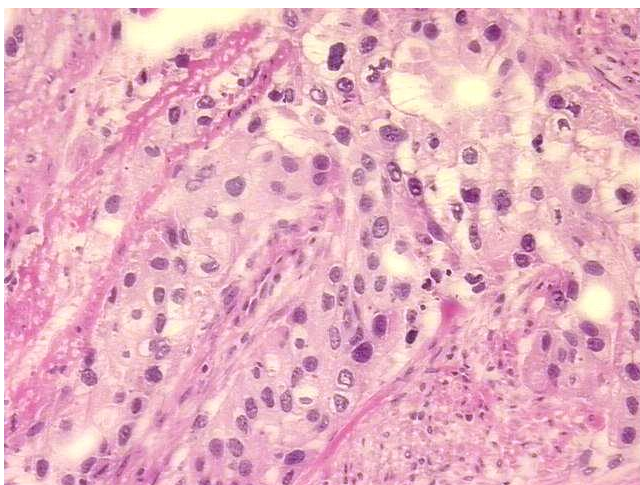
[View online »](#)

CASE Diagnosis (from medical center path report):	Carcinoma of bladder, urothelial
Age:	69
Gender:	Male
Race:	White or Caucasian
Tumor Grade:	AJCC G2: Moderately differentiated
Minimum Stage Grouping:	III
T (Extent of Primary Tumor):	T3a
N (Lymph node metastasis):	N0
M (Distant metastasis):	MX
Diagnostic Test Results:	Proliferation index ~ PI,High; p53 oncoprotein ~ TP53 ! by IHC,Positive; ERBB1 ~ EGFR ~ Epidermal growth factor receptor ! by IHC,Positive, weak; DNA ploidy ~ Cell ploidy,Aneuploid: DI not 0.5 or 1.0 or 2.0; ERBB2,Not amplified; HER2 ~ ERBB2
Storage:	Store tissue total RNA at -80°C.
Stability:	These products are stable for one year from date of shipping when stored at -80°C without repeated freeze/thaws.

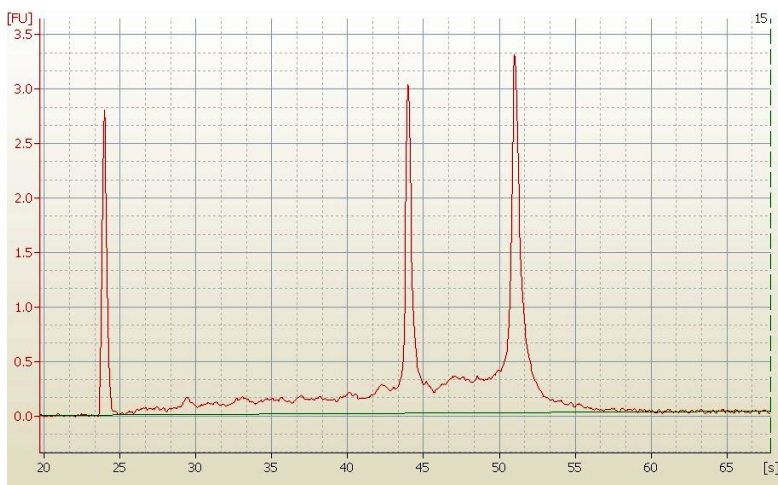
Product images:



4x Image



20x Image



RNA Electropherogram Image



RNA RT-PCR Image