

## Product datasheet for **CR562505**

### Tissue Total RNA, Endometrium

#### Product data:

Product Type:	Total RNA
Disease State:	Cancer
Diagnosis Category:	Sarcoma
Tissue:	Endometrium
Frozen Sample ID:	FR00040D41
Case ID:	CI0000017937
Prep:	1
Vial ID:	RN00003BA5
Tissue of Origin:	Endometrium
Site of Finding:	Endometrium
Appearance:	Tumor
Sample Diagnosis (from Pathology Verification):	Sarcoma, endometrial stromal
Normal:	0%
Lesional:	0%
Tumor:	90%
Tumor Hypo/Acellular Stroma:	0%
Tumor Hypercellular Stroma:	10%
Necrosis:	0%
Pathology Verification notes from H&E review:	Tumor Stroma (Hypo/Acellular): Fibrosis
Bioanalyzer Ratio (28S/18S):	1.17



[View online »](#)

**CASE Diagnosis (from medical center path report):** Sarcoma, stromal

**Age:** 83

**Gender:** Female

**Race:** White or Caucasian

**Tumor Grade:** FIGO G2: Moderately differentiated

**Minimum Stage Grouping:** IIB

**T (Extent of Primary Tumor):** T2b

**N (Lymph node metastasis):** NX

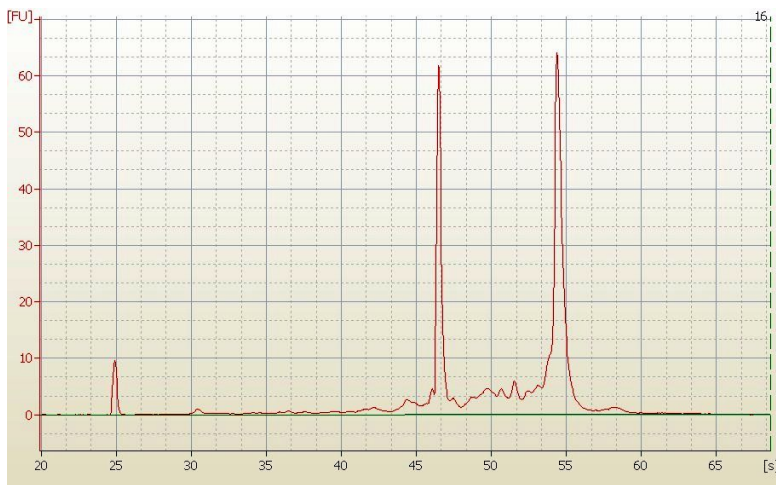
**M (Distant metastasis):** MX

**Diagnostic Test Results:** CD227 ~ MUC1 ~ EMA ~ CA15-3 ! by IHC,Negative; MyoD1 ~ Myf3 ! by IHC,Negative; Smooth muscle actin ~ SMA ~ Alpha-SMA ! by IHC,Negative; Vimentin ~ VIM ! by IHC,Positive; S100 protein,Negative; Progesterone receptor ~ PR ! by IHC,Positive

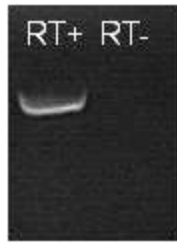
**Storage:** Store tissue total RNA at -80°C.

**Stability:** These products are stable for one year from date of shipping when stored at -80°C without repeated freeze/thaws.

**Product images:**



RNA Electropherogram Image



RNA RT-PCR Image