

Product datasheet for CR562504

Tissue Total RNA, Colon: transverse

Product data:

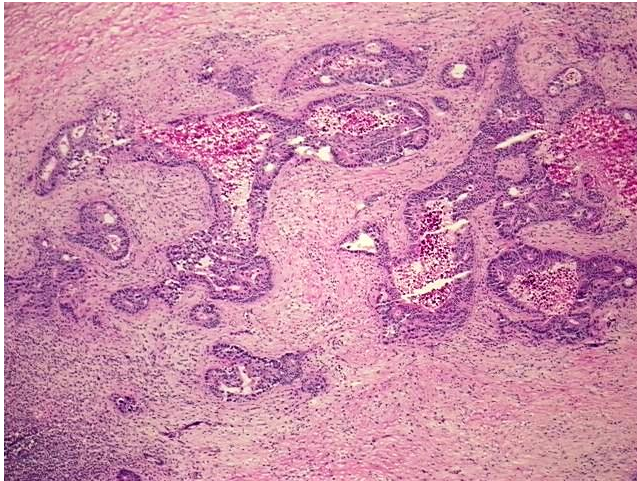
Product Type:	Total RNA
Disease State:	Cancer
Diagnosis Category:	Colorectal Cancer
Tissue:	Colon
Frozen Sample ID:	FR6A38E668
Case ID:	CI0000017970
Prep:	1
Vial ID:	RN00002322
Tissue of Origin:	Colon: transverse
Site of Finding:	Lymph node
Appearance:	Tumor
Sample Diagnosis (from Pathology Verification):	Adenocarcinoma of colon, metastatic
Normal:	0%
Lesional:	0%
Tumor:	40%
Tumor Hypo/Acellular Stroma:	10%
Tumor Hypercellular Stroma:	40%
Necrosis:	10%
Pathology Verification notes from H&E review:	Tumor Stroma (Cellular): Fibroblastic cells; Tumor Stroma (Hypo/Acellular): Fibrosis
Bioanalyzer Ratio (28S/18S):	1.51



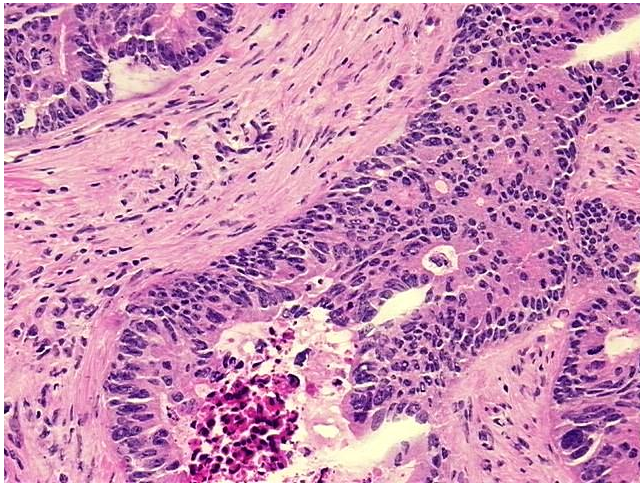
[View online »](#)

CASE Diagnosis (from medical center path report):	Adenocarcinoma of colon
Age:	51
Gender:	Female
Race:	White or Caucasian
Tumor Grade:	AJCC G2: Moderately differentiated
Minimum Stage Grouping:	IIIC
T (Extent of Primary Tumor):	T3
N (Lymph node metastasis):	N2
M (Distant metastasis):	MX
Storage:	Store tissue total RNA at -80°C.
Stability:	These products are stable for one year from date of shipping when stored at -80°C without repeated freeze/thaws.

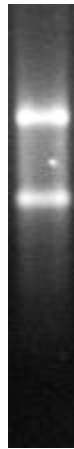
Product images:



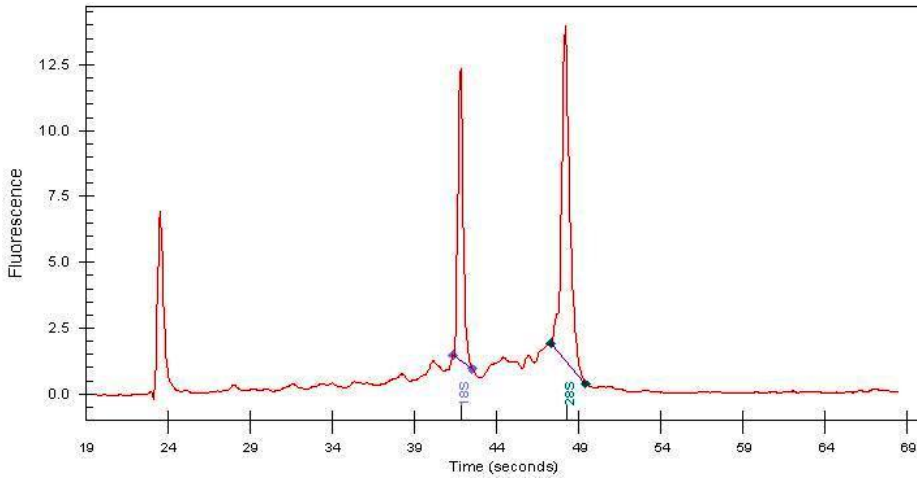
4x Image



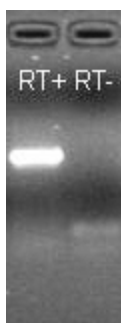
20x Image



RNA Gel Image



RNA Electropherogram Image



RNA RT-PCR Image