

Product datasheet for CR562485

Tissue Total RNA, Lung: right upper lobe

Product data:

Product Type:	Total RNA
Disease State:	Cancer
Diagnosis Category:	Lung Cancer
Tissue:	Lung
Frozen Sample ID:	FR5B34720C
Case ID:	CI0000018912
Prep:	1
Vial ID:	RN00003464
Tissue of Origin:	Lung: right upper lobe
Site of Finding:	Lung: right upper lobe
Appearance:	Tumor
Sample Diagnosis (from Pathology Verification):	Carcinoma of lung, squamous cell
Normal:	25%
Lesional:	0%
Tumor:	65%
Tumor Hypo/Acellular Stroma:	0%
Tumor Hypercellular Stroma:	10%
Necrosis:	0%
Pathology Verification notes from H&E review:	Inflammation: Severe Lymphoid infiltrate
Bioanalyzer Ratio (28S/18S):	1.23


[View online »](#)

CASE Diagnosis (from medical center path report): Carcinoma of lung, squamous cell

Age: 55

Gender: Male

Race: White or Caucasian

Tumor Grade: AJCC G3: Poorly differentiated

Minimum Stage Grouping: IIB

T (Extent of Primary Tumor): T3

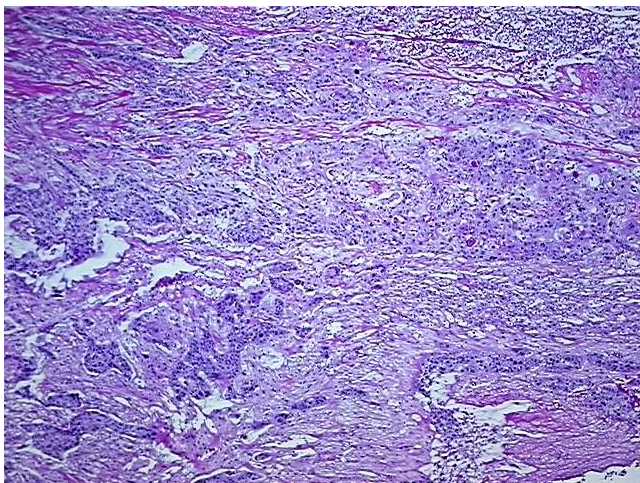
N (Lymph node metastasis): N0

M (Distant metastasis): MX

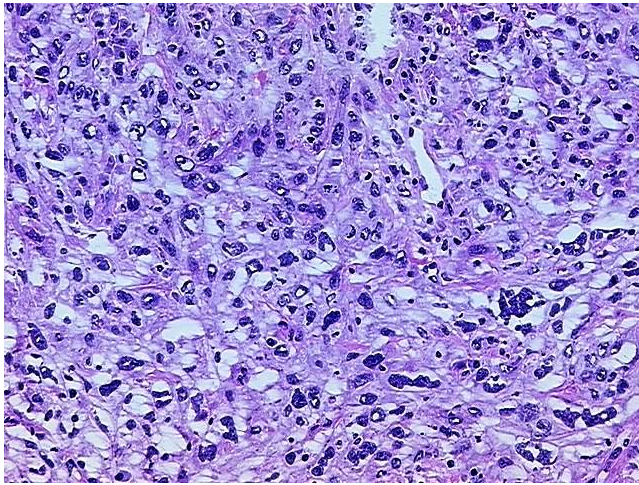
Storage: Store tissue total RNA at -80°C.

Stability: These products are stable for one year from date of shipping when stored at -80°C without repeated freeze/thaws.

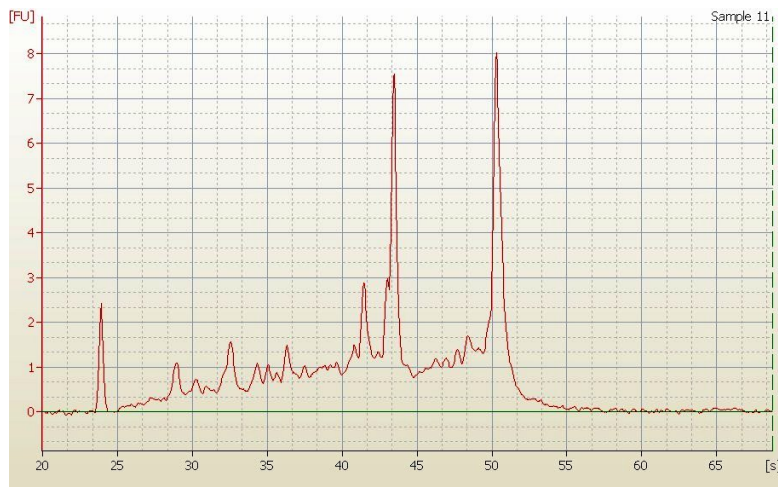
Product images:



4x Image



20x Image



RNA Electropherogram Image



RNA RT-PCR Image