

## Product datasheet for CR562473

### Tissue Total RNA, Soft tissue

#### Product data:

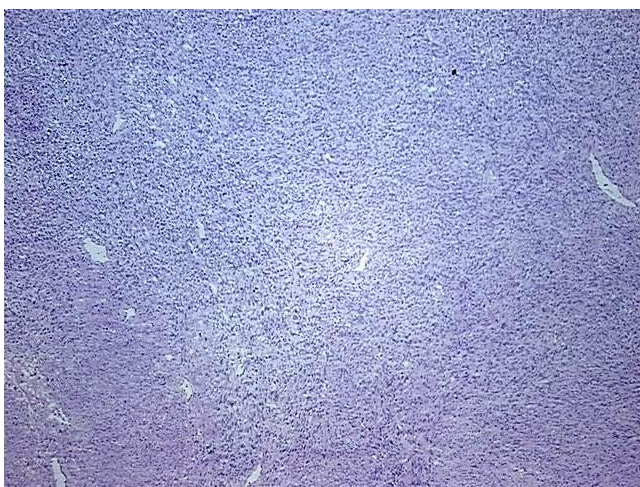
Product Type:	Total RNA
Disease State:	Cancer
Diagnosis Category:	Sarcoma
Tissue:	Smooth muscle
Frozen Sample ID:	FR0003916F
Case ID:	CI0000017724
Prep:	1
Vial ID:	RN00003B8E
Tissue of Origin:	Soft tissue
Site of Finding:	Kidney
Appearance:	Tumor
Sample Diagnosis (from Pathology Verification):	Leiomyosarcoma
Normal:	0%
Lesional:	0%
Tumor:	80%
Tumor Hypo/Acellular Stroma:	0%
Tumor Hypercellular Stroma:	20%
Necrosis:	0%
Bioanalyzer Ratio (28S/18S):	1.8
CASE Diagnosis (from medical center path report):	Leiomyosarcoma
Age:	62



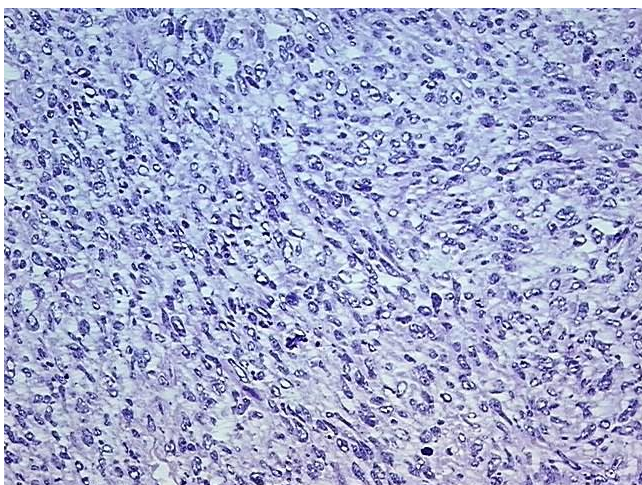
[View online »](#)

Gender:	Male
Race:	White or Caucasian
Tumor Grade:	AJCC G3: Poorly differentiated
Minimum Stage Grouping:	III
T (Extent of Primary Tumor):	T2b
N (Lymph node metastasis):	N0
M (Distant metastasis):	MX
Diagnostic Test Results:	Myoglobin ! by IHC,Negative; Smooth muscle actin ~ SMA ~ Alpha-SMA ! by IHC,Positive, weak; Vimentin ~ VIM ! by IHC,Positive, weak; S100 protein,Negative; HMB45 melanoma antigen ~ GP100 ! by IHC,Negative; Desmin ! by IHC,Positive, weak; Kappa ligh
Storage:	Store tissue total RNA at -80°C.
Stability:	These products are stable for one year from date of shipping when stored at -80°C without repeated freeze/thaws.

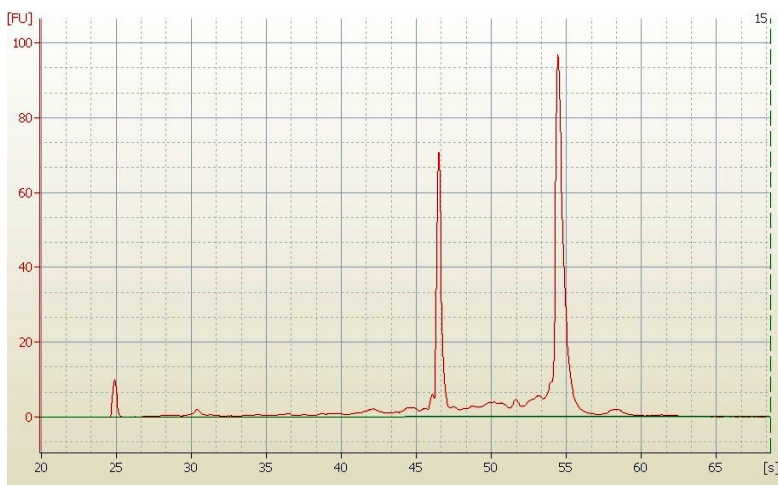
### Product images:



4x Image



20x Image



RNA Electropherogram Image



RNA RT-PCR Image