

Product datasheet for CR562471

Tissue Total RNA, Ovary: bilateral

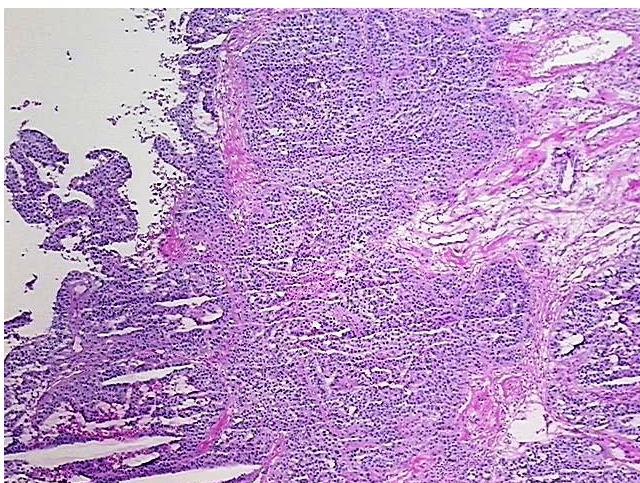
Product data:

Product Type:	Total RNA
Disease State:	Cancer
Diagnosis Category:	Ovarian Cancer
Tissue:	Ovary
Frozen Sample ID:	FR6A38BD97
Case ID:	CI0000017540
Prep:	1
Vial ID:	RN000033DF
Tissue of Origin:	Ovary: bilateral
Site of Finding:	Ovary: right
Appearance:	Tumor
Sample Diagnosis (from Pathology Verification):	Adenocarcinoma of ovary, serous
Normal:	10%
Lesional:	0%
Tumor:	50%
Tumor Hypo/Acellular Stroma:	10%
Tumor Hypercellular Stroma:	0%
Necrosis:	30%
Bioanalyzer Ratio (28S/18S):	1
CASE Diagnosis (from medical center path report):	Adenocarcinoma of ovary, serous
Age:	68

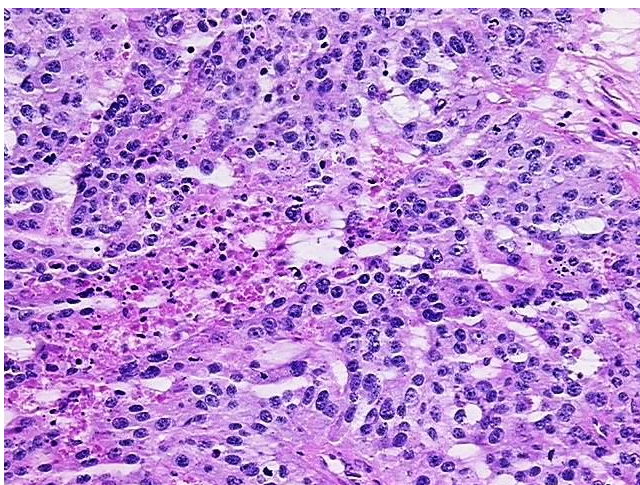


[View online »](#)

Gender:	Female
Race:	Black or African American
Tumor Grade:	FIGO G3: Poorly differentiated
Minimum Stage Grouping:	IV
T (Extent of Primary Tumor):	T3c
N (Lymph node metastasis):	NX
M (Distant metastasis):	M1
Storage:	Store tissue total RNA at -80°C.
Stability:	These products are stable for one year from date of shipping when stored at -80°C without repeated freeze/thaws.

Product images:

4x Image



20x Image