

## Product datasheet for CR562457

### Tissue Total RNA, Ovary: left

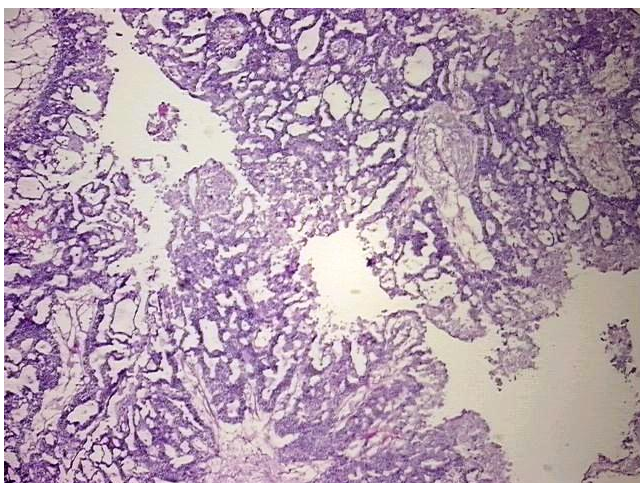
#### Product data:

Product Type:	Total RNA
Disease State:	Cancer
Diagnosis Category:	Ovarian Cancer
Tissue:	Ovary
Frozen Sample ID:	FR000427FD
Case ID:	CI0000019017
Prep:	1
Vial ID:	RN00003858
Tissue of Origin:	Ovary: left
Site of Finding:	Ovary: left
Appearance:	Tumor
Sample Diagnosis (from Pathology Verification):	Carcinoma of ovary, endometrioid
Normal:	0%
Lesional:	0%
Tumor:	95%
Tumor Hypo/Acellular Stroma:	5%
Tumor Hypercellular Stroma:	0%
Necrosis:	0%
Bioanalyzer Ratio (28S/18S):	1.6
CASE Diagnosis (from medical center path report):	Carcinoma of ovary, endometrioid
Age:	57

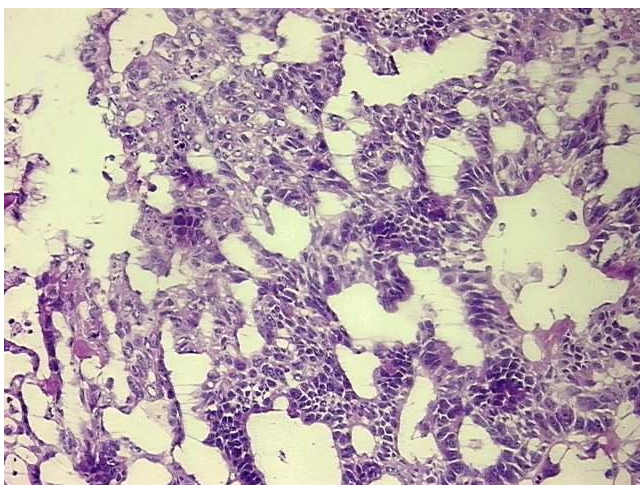


[View online »](#)

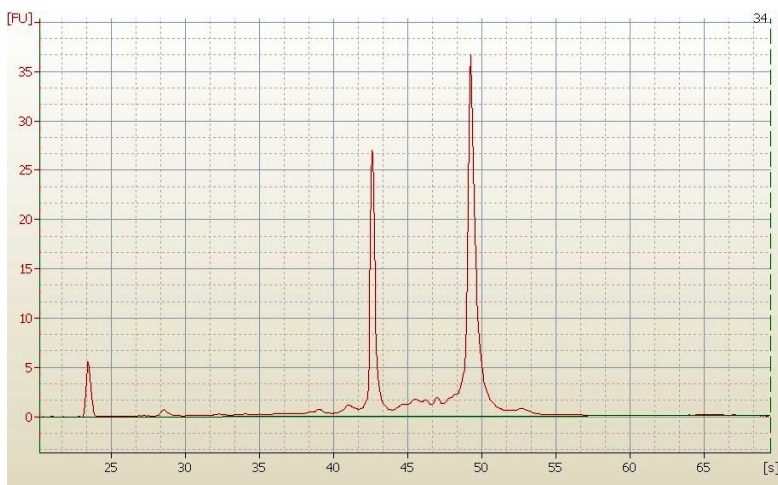
Gender:	Female
Race:	White or Caucasian
Tumor Grade:	FIGO G2: Moderately differentiated
Minimum Stage Grouping:	IA
T (Extent of Primary Tumor):	T1a
N (Lymph node metastasis):	N0
M (Distant metastasis):	MX
Storage:	Store tissue total RNA at -80°C.
Stability:	These products are stable for one year from date of shipping when stored at -80°C without repeated freeze/thaws.

**Product images:**

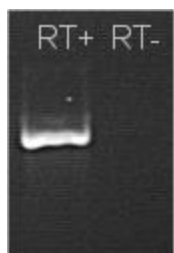
4x Image



20x Image



RNA Electropherogram Image



RNA RT-PCR Image