

Product datasheet for **CR562454**

Tissue Total RNA, Breast

Product data:

Product Type:	Total RNA
Disease State:	Cancer
Diagnosis Category:	Breast Cancer
Tissue:	Breast
Frozen Sample ID:	FR00041762
Case ID:	CI0000019070
Prep:	1
Vial ID:	RN000037AF
Tissue of Origin:	Breast
Site of Finding:	Breast
Appearance:	Tumor
Sample Diagnosis (from Pathology Verification):	Adenocarcinoma of breast, ductal
Normal:	0%
Lesional:	0%
Tumor:	90%
Tumor Hypo/Acellular Stroma:	10%
Tumor Hypercellular Stroma:	0%
Necrosis:	0%
Pathology Verification notes from H&E review:	Tumor Stroma (Cellular): Desmoplastic reaction
Bioanalyzer Ratio (28S/18S):	1.21



[View online »](#)

CASE Diagnosis (from medical center path report): Adenocarcinoma of breast, ductal

Age: 80

Gender: Female

Race: Black or African American

Tumor Grade: Nottingham G2: 6-7 points Intermediate combined grade (moderately favorable)

Minimum Stage Grouping: IIB

T (Extent of Primary Tumor): T3

N (Lymph node metastasis): NX

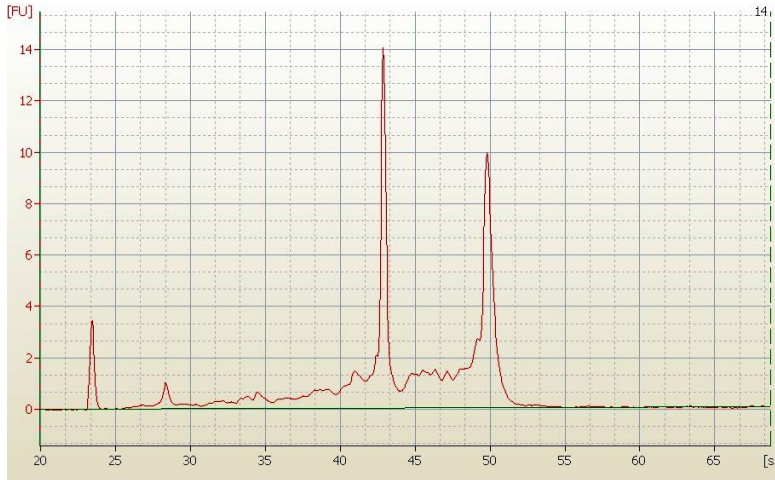
M (Distant metastasis): MX

Diagnostic Test Results: Progesterone receptor ~ PR ! by IHC,Positive; Estrogen receptor ~ ER ! by IHC,Positive; HER2 ~ ERBB2 ~ Neu ! by IHC,Negative

Storage: Store tissue total RNA at -80°C.

Stability: These products are stable for one year from date of shipping when stored at -80°C without repeated freeze/thaws.

Product images:



RNA Electropherogram Image



RNA RT-PCR Image