

Product datasheet for CR562453

Tissue Total RNA, Soft tissue

Product data:

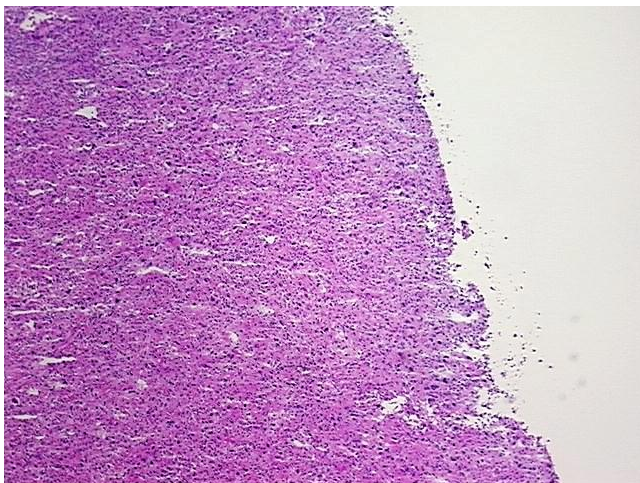
Product Type:	Total RNA
Disease State:	Cancer
Diagnosis Category:	Sarcoma
Tissue:	Soft tissue
Frozen Sample ID:	FR000417A2
Case ID:	CI0000019073
Prep:	1
Vial ID:	RN0000324C
Tissue of Origin:	Soft tissue
Site of Finding:	Bone: femur
Appearance:	Tumor
Sample Diagnosis (from Pathology Verification):	Sarcoma, pleomorphic
Normal:	0%
Lesional:	0%
Tumor:	90%
Tumor Hypo/Acellular Stroma:	10%
Tumor Hypercellular Stroma:	0%
Necrosis:	0%
Pathology Verification notes from H&E review:	Tumor: high grade with spindle and epithelioid cell types
Bioanalyzer Ratio (28S/18S):	1.46



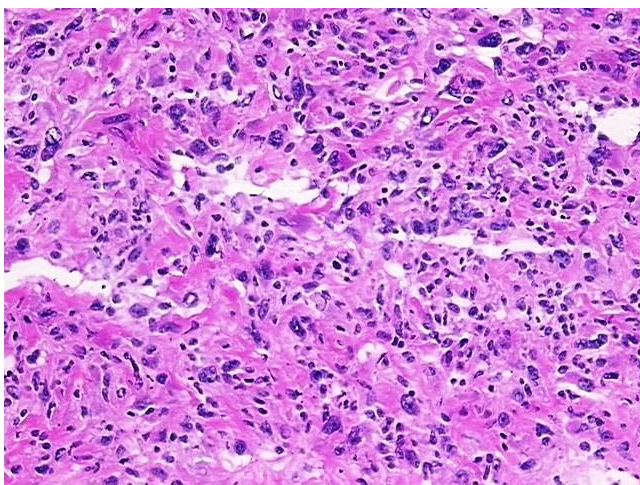
[View online »](#)

CASE Diagnosis (from medical center path report):	Sarcoma, pleomorphic
Age:	46
Gender:	Male
Race:	Black or African American
Tumor Grade:	AJCC G3-4: Poorly differentiated or undifferentiated
Minimum Stage Grouping:	III
T (Extent of Primary Tumor):	T2b
N (Lymph node metastasis):	NX
M (Distant metastasis):	MX
Storage:	Store tissue total RNA at -80°C.
Stability:	These products are stable for one year from date of shipping when stored at -80°C without repeated freeze/thaws.

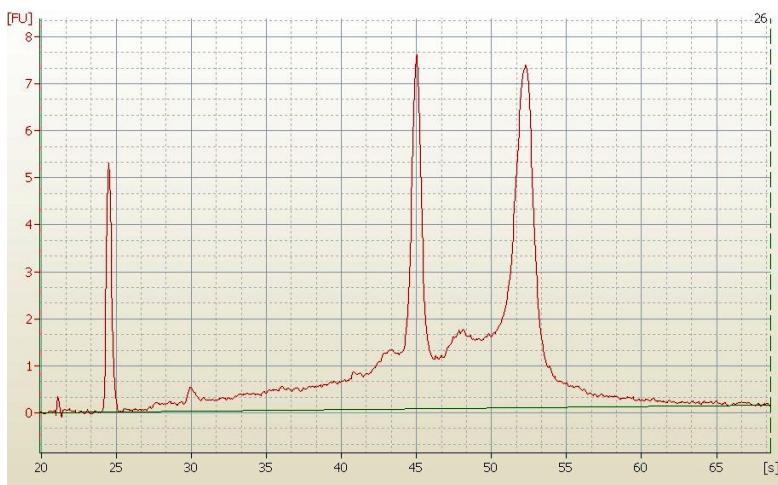
Product images:



4x Image



20x Image



RNA Electropherogram Image



RNA RT-PCR Image