

Product datasheet for CR562426

Tissue Total RNA, Lung: right upper lobe

Product data:

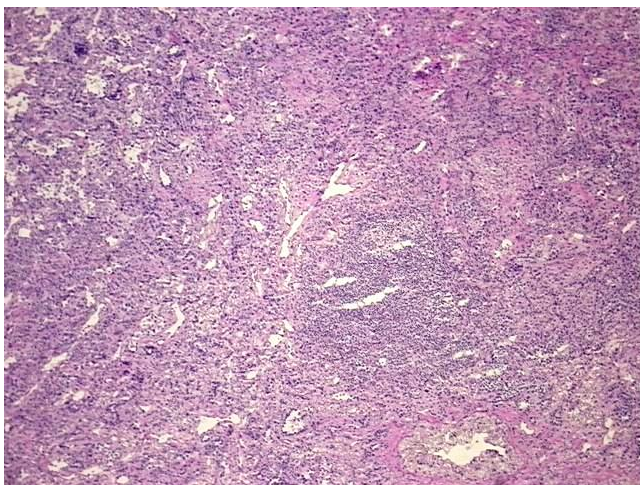
Product Type:	Total RNA
Disease State:	Cancer
Diagnosis Category:	Lung Cancer
Tissue:	Lung
Frozen Sample ID:	FR00039379
Case ID:	CI0000018460
Prep:	1
Vial ID:	RN00002EF0
Tissue of Origin:	Lung: right upper lobe
Site of Finding:	Lung: right upper lobe
Appearance:	Tumor
Sample Diagnosis (from Pathology Verification):	Adenocarcinoma of lung
Normal:	0%
Lesional:	0%
Tumor:	70%
Tumor Hypo/Acellular Stroma:	15%
Tumor Hypercellular Stroma:	10%
Necrosis:	5%
Bioanalyzer Ratio (28S/18S):	1.36
CASE Diagnosis (from medical center path report):	Adenocarcinoma of lung
Age:	41



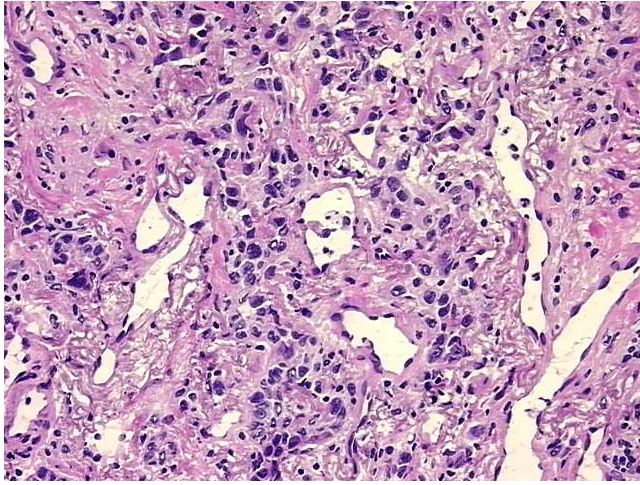
[View online »](#)

Gender:	Female
Race:	White or Caucasian
Tumor Grade:	AJCC G2: Moderately differentiated
Minimum Stage Grouping:	IV
T (Extent of Primary Tumor):	T1
N (Lymph node metastasis):	NX
M (Distant metastasis):	M1
Diagnostic Test Results:	Proliferation index ~ PI,High; ERBB1 ~ EGFR ~ Epidermal growth factor receptor ! by IHC,Positive, strong; DNA ploidy ~ Cell ploidy,Abnormal ploidy; HER2 ~ ERBB2 ~ Neu ! by IHC,Negative; CA125 ~ Ovarian Cancer Antigen,Negative; Thyroid transc
Storage:	Store tissue total RNA at -80°C.
Stability:	These products are stable for one year from date of shipping when stored at -80°C without repeated freeze/thaws.

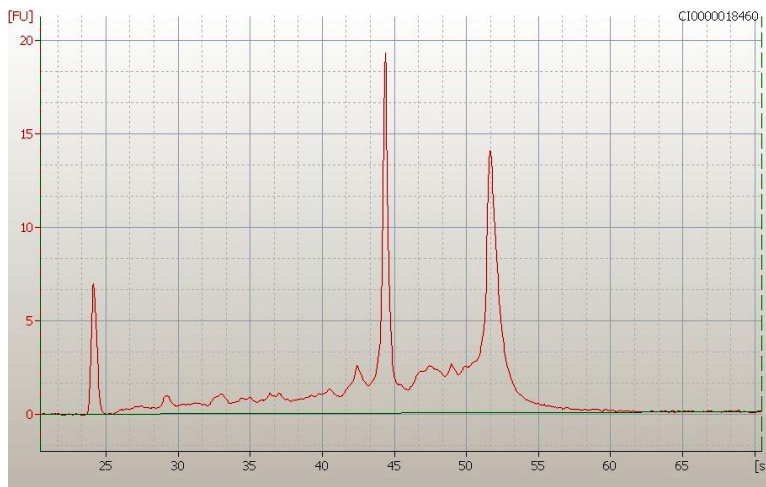
Product images:



4x Image



20x Image



RNA Electropherogram Image



RNA RT-PCR Image