

Product datasheet for CR562420

Tissue Total RNA, Lung: right lower lobe

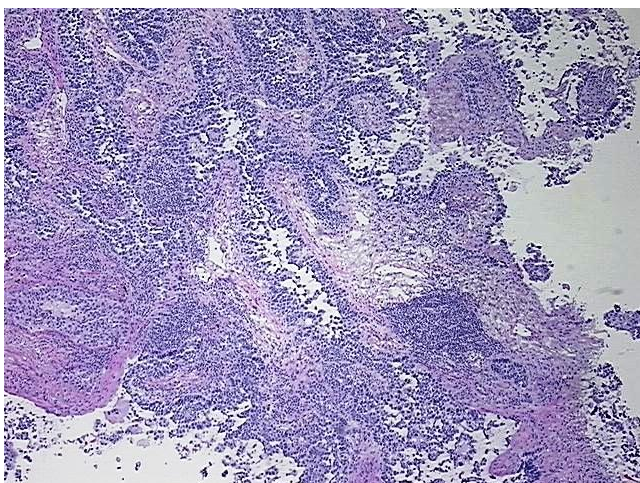
Product data:

Product Type:	Total RNA
Disease State:	Cancer
Diagnosis Category:	Lung Cancer
Tissue:	Lung
Frozen Sample ID:	FR5B33DC9E
Case ID:	CI0000018513
Prep:	3
Vial ID:	RN000023E1
Tissue of Origin:	Lung: right lower lobe
Site of Finding:	Lung: right lower lobe
Appearance:	Tumor
Sample Diagnosis (from Pathology Verification):	Adenocarcinoma of lung, papillary
Normal:	0%
Lesional:	0%
Tumor:	70%
Tumor Hypo/Acellular Stroma:	30%
Tumor Hypercellular Stroma:	0%
Necrosis:	0%
Bioanalyzer Ratio (28S/18S):	1.39
CASE Diagnosis (from medical center path report):	Adenocarcinoma of lung, papillary
Age:	66

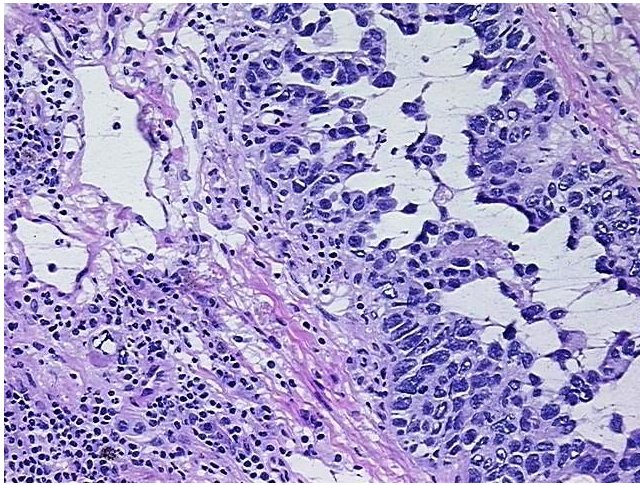


[View online »](#)

Gender:	Male
Race:	White or Caucasian
Tumor Grade:	AJCC G2: Moderately differentiated
Minimum Stage Grouping:	IIIA
T (Extent of Primary Tumor):	T2
N (Lymph node metastasis):	N2
M (Distant metastasis):	MX
Storage:	Store tissue total RNA at -80°C.
Stability:	These products are stable for one year from date of shipping when stored at -80°C without repeated freeze/thaws.

Product images:

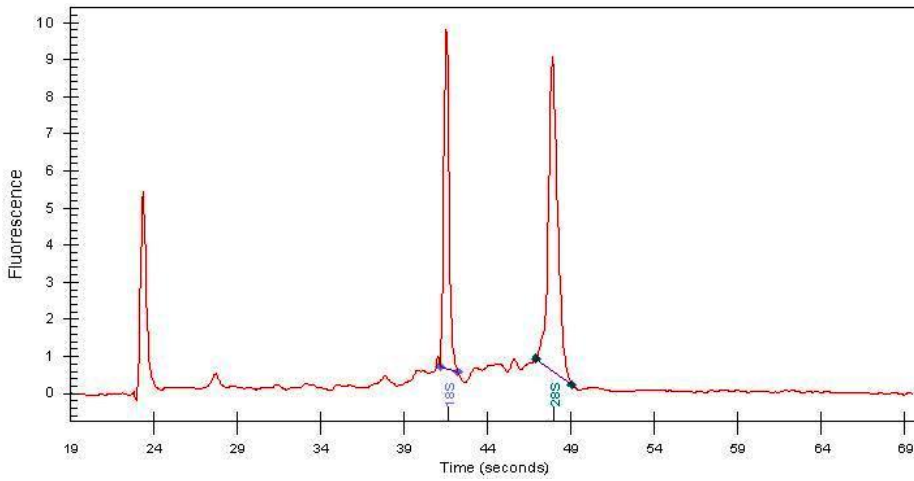
4x Image



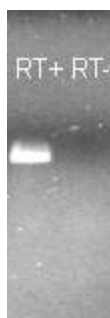
20x Image



RNA Gel Image



RNA Electropherogram Image



RNA RT-PCR Image