

Product datasheet for CR562414

Tissue Total RNA, Breast

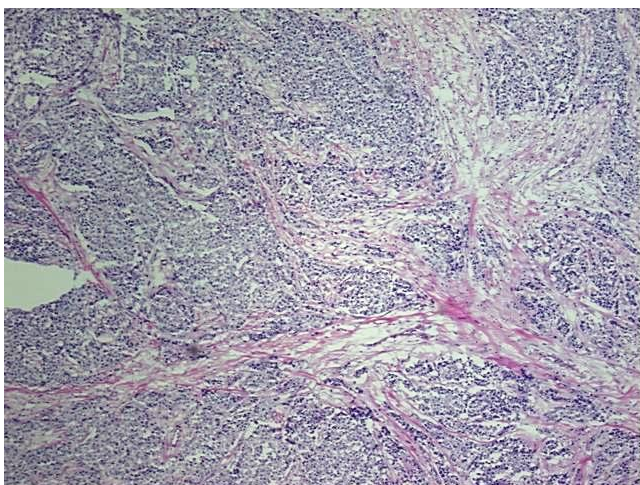
Product data:

Product Type:	Total RNA
Disease State:	Cancer
Diagnosis Category:	Breast Cancer
Tissue:	Breast
Frozen Sample ID:	FR0000090B
Case ID:	CU0000000240
Prep:	1
Vial ID:	RN000000CD
Tissue of Origin:	Breast
Site of Finding:	Breast
Appearance:	Tumor
Sample Diagnosis (from Pathology Verification):	Adenocarcinoma of breast, ductal
Normal:	1%
Lesional:	0%
Tumor:	75%
Tumor Hypo/Acellular Stroma:	7%
Tumor Hypercellular Stroma:	15%
Necrosis:	2%
Bioanalyzer Ratio (28S/18S):	1.22
CASE Diagnosis (from medical center path report):	Adenocarcinoma of breast, ductal
Age:	45

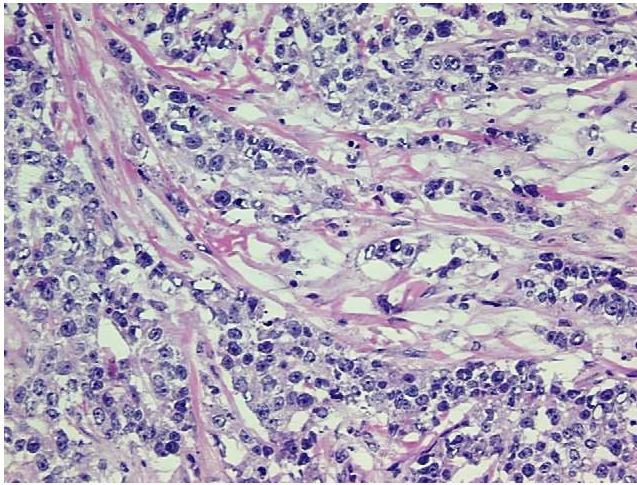


[View online »](#)

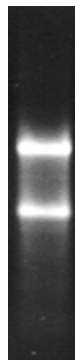
Gender:	Female
Tumor Grade:	NSABP Grade: Nuclear 3 of 3 & Histologic 3 of 3
Minimum Stage Grouping:	IIA
T (Extent of Primary Tumor):	T2
N (Lymph node metastasis):	N0
M (Distant metastasis):	MX
Storage:	Store tissue total RNA at -80°C.
Stability:	These products are stable for one year from date of shipping when stored at -80°C without repeated freeze/thaws.

Product images:

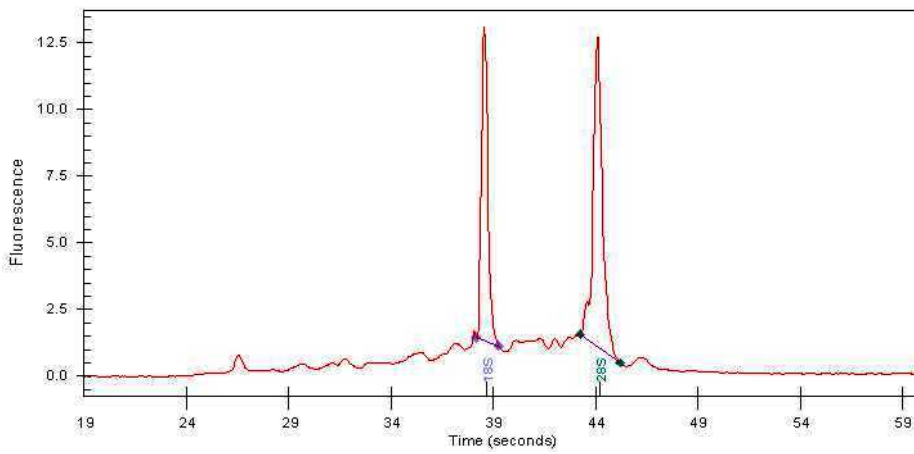
4x Image



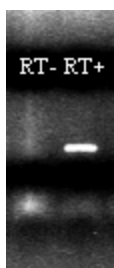
20x Image



RNA Gel Image



RNA Electropherogram Image



RNA RT-PCR Image