

## Product datasheet for CR562379

### Tissue Total RNA, Ovary: left

#### Product data:

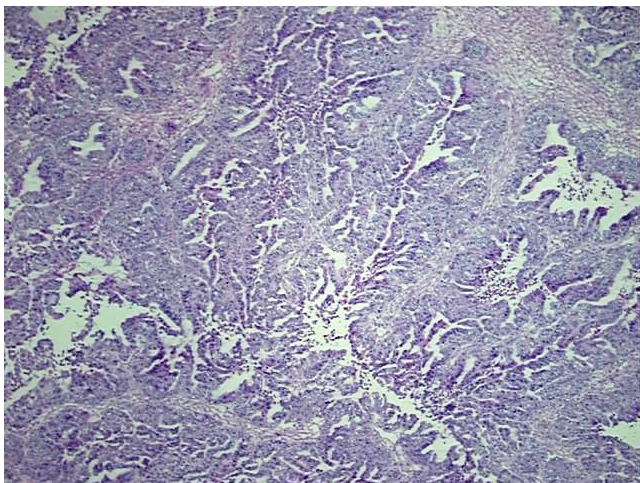
Product Type:	Total RNA
Disease State:	Cancer
Diagnosis Category:	Ovarian Cancer
Tissue:	Ovary
Frozen Sample ID:	FR00000751
Case ID:	CU0000000185
Prep:	8
Vial ID:	RN000012D1
Tissue of Origin:	Ovary: left
Site of Finding:	Ovary: left
Appearance:	Tumor
Sample Diagnosis (from Pathology Verification):	Adenocarcinoma of ovary, mucinous
Normal:	0%
Lesional:	0%
Tumor:	80%
Tumor Hypo/Acellular Stroma:	15%
Tumor Hypercellular Stroma:	0%
Necrosis:	5%
Pathology Verification notes from H&E review:	Tumor: with an endometrioid adenocarcinoma component
Bioanalyzer Ratio (28S/18S):	1.52



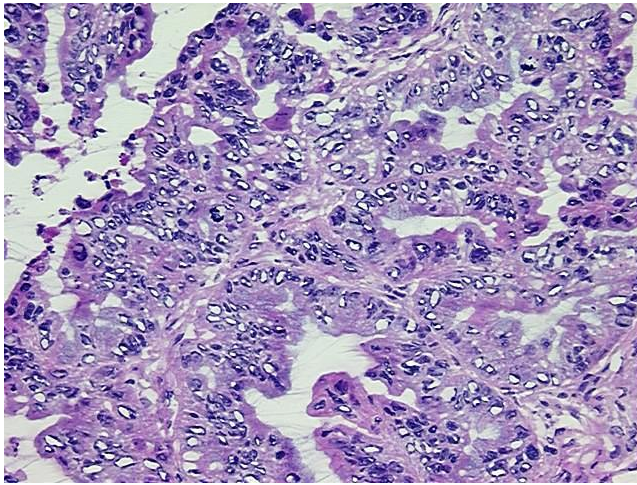
[View online »](#)

<b>CASE Diagnosis (from medical center path report):</b>	Adenocarcinoma of ovary, mucinous
<b>Age:</b>	55
<b>Gender:</b>	Female
<b>Tumor Grade:</b>	FIGO G1: Well differentiated
<b>Minimum Stage Grouping:</b>	IIB
<b>T (Extent of Primary Tumor):</b>	T2b
<b>N (Lymph node metastasis):</b>	NX
<b>M (Distant metastasis):</b>	MX
<b>Diagnostic Test Results:</b>	Epithelial specific antigen ~ BerEP4 ~ MOC31 ! by IHC,Positive
<b>Storage:</b>	Store tissue total RNA at -80°C.
<b>Stability:</b>	These products are stable for one year from date of shipping when stored at -80°C without repeated freeze/thaws.

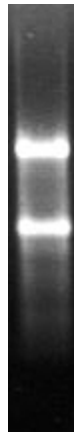
### Product images:



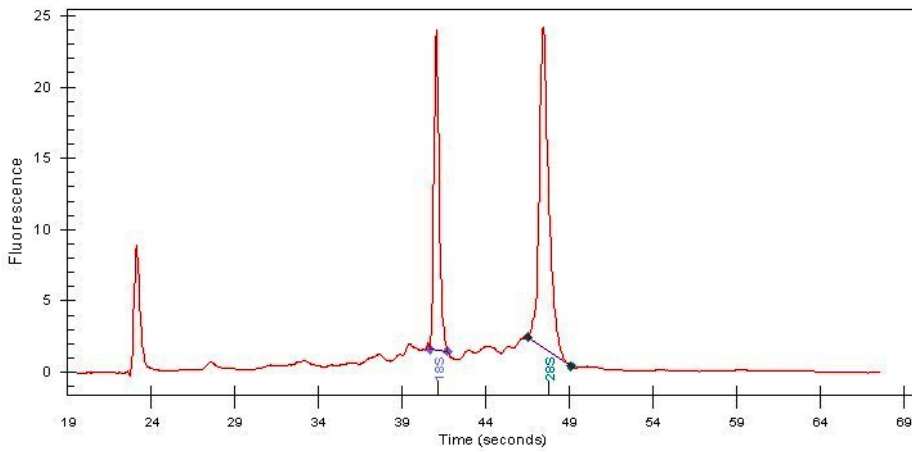
4x Image



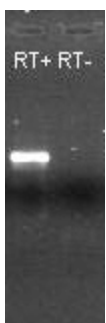
20x Image



RNA Gel Image



RNA Electropherogram Image



RNA RT-PCR Image