

Product datasheet for CR562313

Tissue Total RNA, Urinary bladder

Product data:

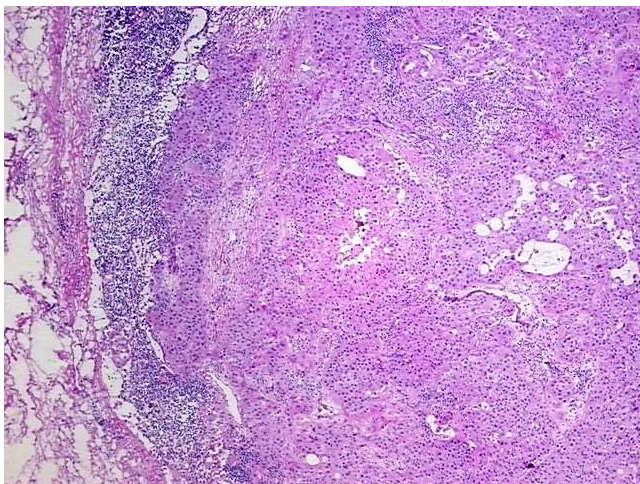
Product Type:	Total RNA
Disease State:	Cancer
Diagnosis Category:	Bladder Cancer
Tissue:	Urinary bladder
Frozen Sample ID:	FR00000D18
Case ID:	CU0000000372
Prep:	2
Vial ID:	RN000012E1
Tissue of Origin:	Urinary bladder
Site of Finding:	Lymph node
Appearance:	Tumor
Sample Diagnosis (from Pathology Verification):	Carcinoma of bladder, transitional cell, metastatic
Normal:	5%
Lesional:	0%
Tumor:	85%
Tumor Hypo/Acellular Stroma:	5%
Tumor Hypercellular Stroma:	0%
Necrosis:	5%
Pathology Verification notes from H&E review:	Bladder tumor metastasized to lymph node
Bioanalyzer Ratio (28S/18S):	1.64



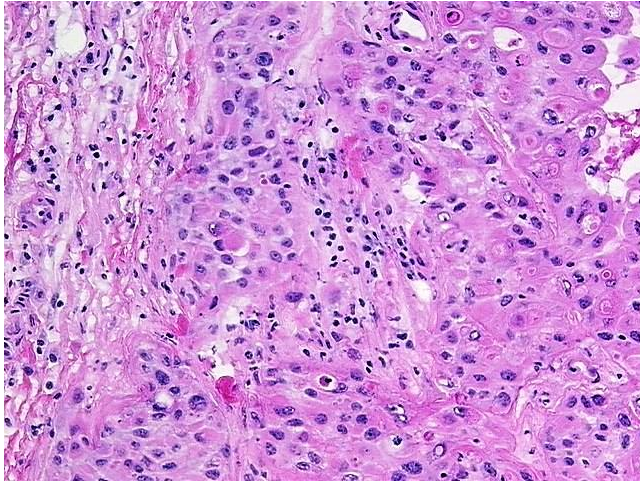
[View online »](#)

CASE Diagnosis (from medical center path report):	Carcinoma of bladder, urothelial
Age:	76
Gender:	Male
Tumor Grade:	See pathology report
Minimum Stage Grouping:	IV
T (Extent of Primary Tumor):	T4a
N (Lymph node metastasis):	N2
M (Distant metastasis):	MX
Storage:	Store tissue total RNA at -80°C.
Stability:	These products are stable for one year from date of shipping when stored at -80°C without repeated freeze/thaws.

Product images:



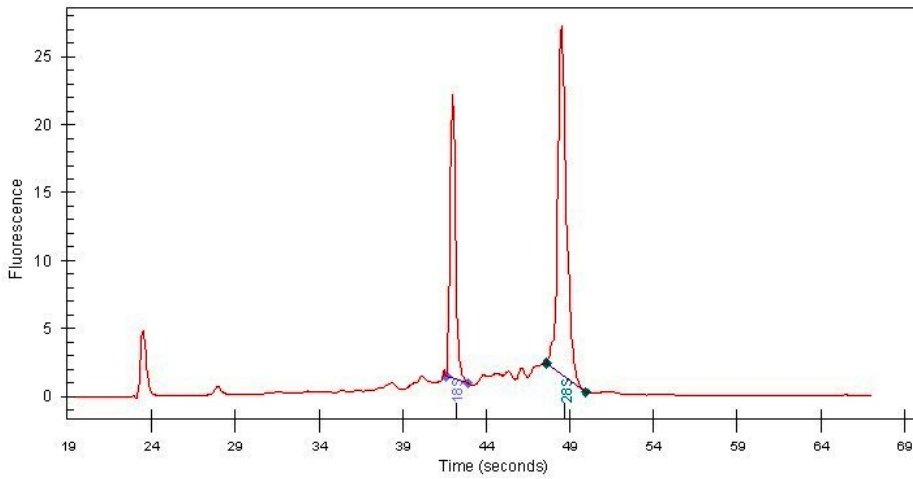
4x Image



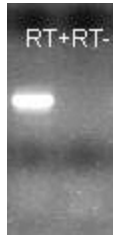
20x Image



RNA Gel Image



RNA Electropherogram Image



RNA RT-PCR Image