

Product datasheet for CR562299

Tissue Total RNA, Cartilage

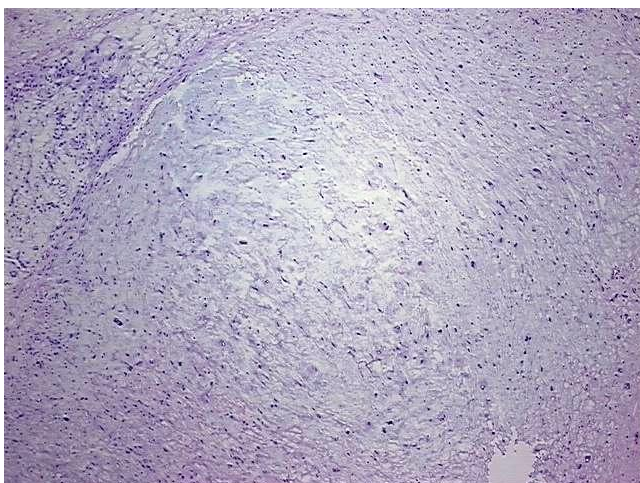
Product data:

Product Type:	Total RNA
Disease State:	Cancer
Diagnosis Category:	Sarcoma
Tissue:	Cartilage
Frozen Sample ID:	FR0004386D
Case ID:	CI7000000498
Prep:	2
Vial ID:	RN00003259
Tissue of Origin:	Cartilage
Site of Finding:	Soft tissue
Appearance:	Tumor
Sample Diagnosis (from Pathology Verification):	Chondrosarcoma, recurrent
Normal:	0%
Lesional:	0%
Tumor:	100%
Tumor Hypo/Acellular Stroma:	0%
Tumor Hypercellular Stroma:	0%
Necrosis:	0%
Bioanalyzer Ratio (28S/18S):	0.9
CASE Diagnosis (from medical center path report):	Chondrosarcoma, recurrent
Age:	55

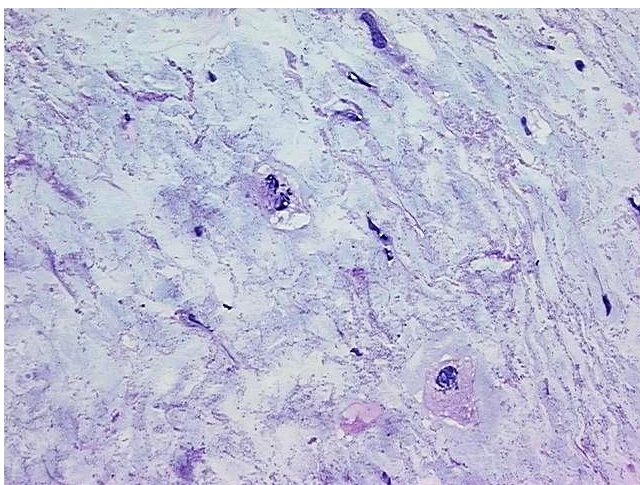


[View online »](#)

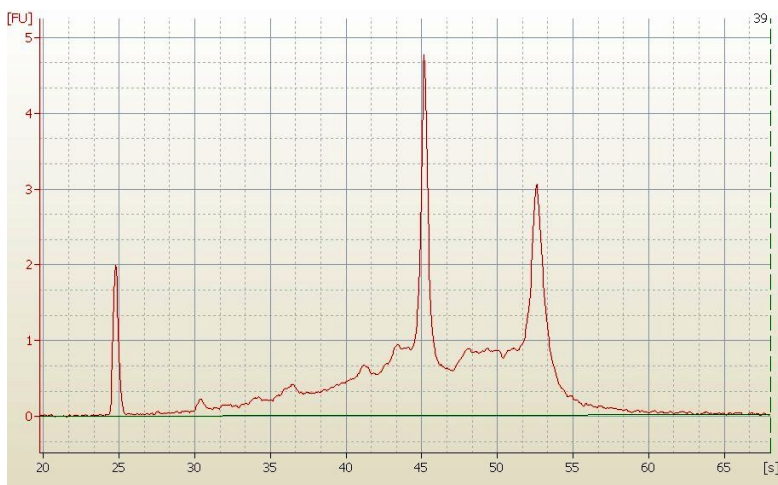
Gender:	Male
Race:	White or Caucasian
Tumor Grade:	AJCC G3-4: Poorly differentiated or undifferentiated
Minimum Stage Grouping:	IIA
T (Extent of Primary Tumor):	T1
N (Lymph node metastasis):	NX
M (Distant metastasis):	MX
Storage:	Store tissue total RNA at -80°C.
Stability:	These products are stable for one year from date of shipping when stored at -80°C without repeated freeze/thaws.

Product images:

4x Image



20x Image



RNA Electropherogram Image