

Product datasheet for CR562298

Tissue Total RNA, Lung: left lower lobe

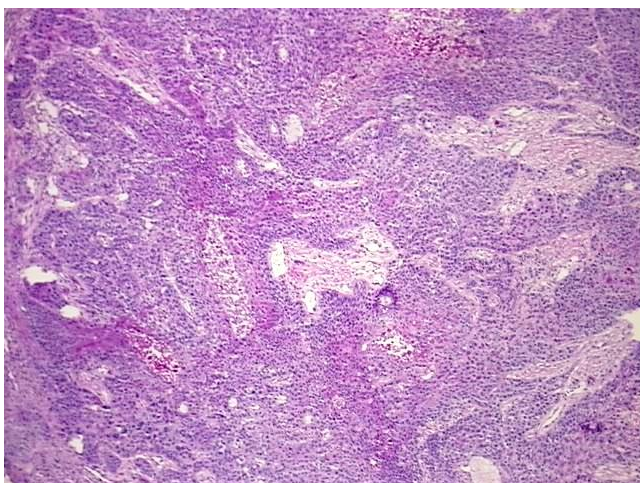
Product data:

Product Type:	Total RNA
Disease State:	Cancer
Diagnosis Category:	Lung Cancer
Tissue:	Lung
Frozen Sample ID:	FR5B33DC89
Case ID:	CI7000000516
Prep:	1
Vial ID:	RN000038C3
Tissue of Origin:	Lung: left lower lobe
Site of Finding:	Lung: left lower lobe
Appearance:	Tumor
Sample Diagnosis (from Pathology Verification):	Carcinoma of lung, squamous cell
Normal:	0%
Lesional:	0%
Tumor:	40%
Tumor Hypo/Acellular Stroma:	20%
Tumor Hypercellular Stroma:	0%
Necrosis:	40%
Bioanalyzer Ratio (28S/18S):	2.13
CASE Diagnosis (from medical center path report):	Carcinoma of lung, squamous cell
Age:	72

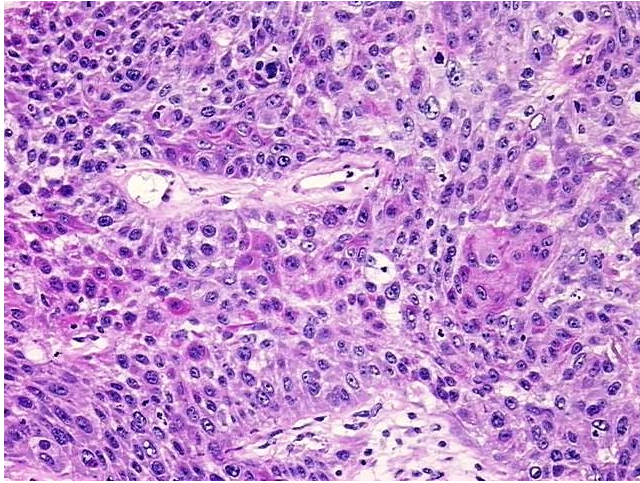


[View online »](#)

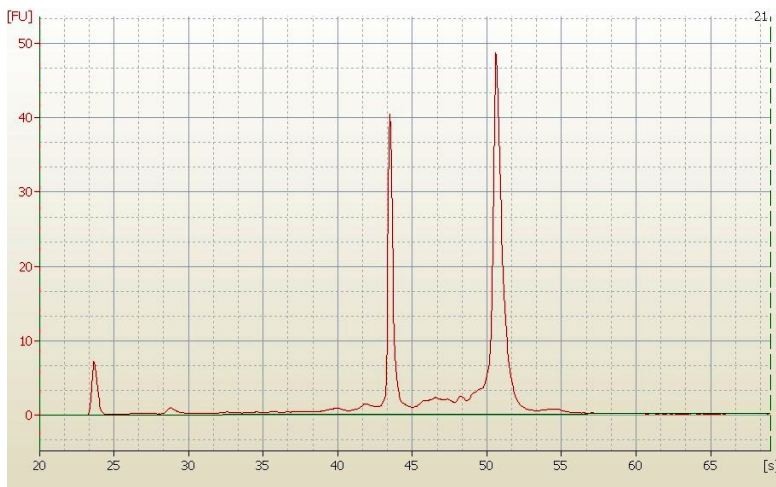
Gender:	Male
Race:	White or Caucasian
Tumor Grade:	AJCC G2: Moderately differentiated
Minimum Stage Grouping:	IIIB
T (Extent of Primary Tumor):	T4
N (Lymph node metastasis):	N1
M (Distant metastasis):	MX
Storage:	Store tissue total RNA at -80°C.
Stability:	These products are stable for one year from date of shipping when stored at -80°C without repeated freeze/thaws.

Product images:

4x Image



20x Image



RNA Electropherogram Image



RNA RT-PCR Image