

Product datasheet for CR562289

Tissue Total RNA, Endometrium

Product data:

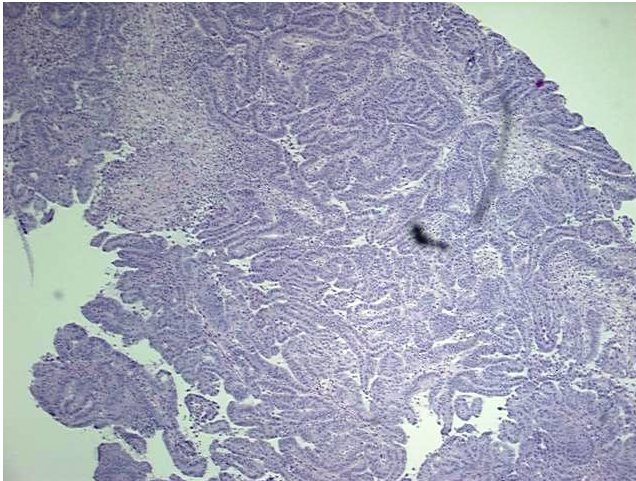
| | |
|---|--|
| Product Type: | Total RNA |
| Disease State: | Cancer |
| Diagnosis Category: | Endometrial Cancer |
| Tissue: | Endometrium |
| Frozen Sample ID: | FR0000021B |
| Case ID: | CU0000000010 |
| Prep: | 1 |
| Vial ID: | RN00000035 |
| Tissue of Origin: | Endometrium |
| Site of Finding: | Uterus |
| Appearance: | Tumor |
| Sample Diagnosis (from Pathology Verification): | Adenocarcinoma of endometrium, endometrioid |
| Normal: | 0% |
| Lesional: | 0% |
| Tumor: | 95% |
| Tumor Hypo/Acellular Stroma: | 5% |
| Tumor Hypercellular Stroma: | 0% |
| Necrosis: | 0% |
| Pathology Verification notes from H&E review: | Prominent inflammatory infiltrate in stromal component |
| Bioanalyzer Ratio (28S/18S): | 1.68 |



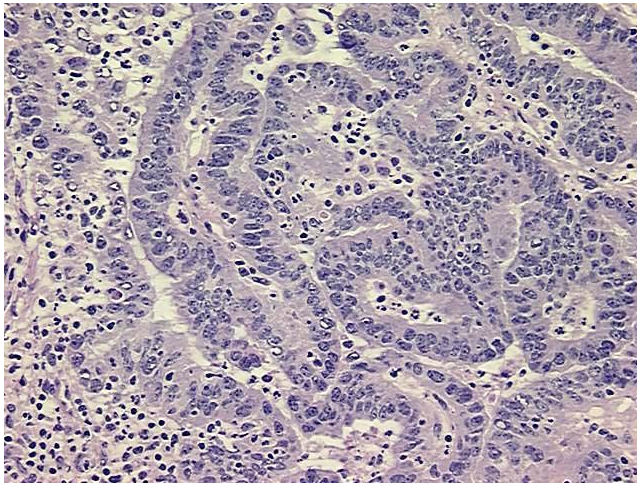
[View online »](#)

| | |
|--|--|
| CASE Diagnosis (from medical center path report): | Adenocarcinoma of endometrium, endometrioid |
| Age: | 70 |
| Gender: | Female |
| Tumor Grade: | FIGO G2: Moderately differentiated |
| Minimum Stage Grouping: | IC |
| T (Extent of Primary Tumor): | T1c |
| N (Lymph node metastasis): | N0 |
| M (Distant metastasis): | MX |
| Diagnostic Test Results: | Progesterone receptor ~ PR ! by IHC,Negative; Estrogen receptor ~ ER ! by IHC,Negative |
| Storage: | Store tissue total RNA at -80°C. |
| Stability: | These products are stable for one year from date of shipping when stored at -80°C without repeated freeze/thaws. |

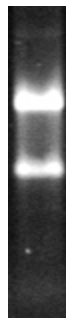
Product images:



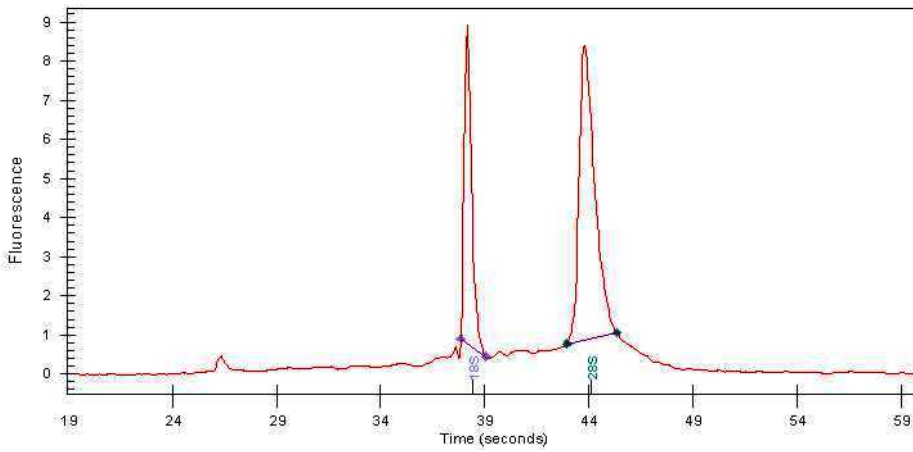
4x Image



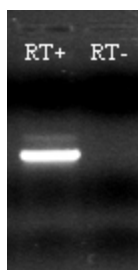
20x Image



RNA Gel Image



RNA Electropherogram Image



RNA RT-PCR Image