

Product datasheet for CR562288

Tissue Total RNA, Lymphoid tissue

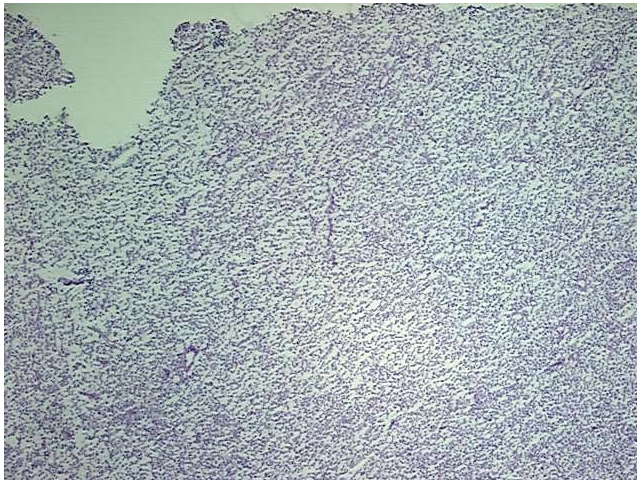
Product data:

Product Type:	Total RNA
Disease State:	Cancer
Diagnosis Category:	Lymphoma
Tissue:	Lymphoid tissue
Frozen Sample ID:	FR00000231
Case ID:	CU0000000011
Prep:	3
Vial ID:	RN00000033
Tissue of Origin:	Lymphoid tissue
Site of Finding:	Stomach
Appearance:	Tumor
Sample Diagnosis (from Pathology Verification):	Lymphoma, large B-cell, diffuse
Normal:	0%
Lesional:	0%
Tumor:	96%
Tumor Hypo/Acellular Stroma:	2%
Tumor Hypercellular Stroma:	0%
Necrosis:	2%
Bioanalyzer Ratio (28S/18S):	1.85
CASE Diagnosis (from medical center path report):	Lymphoma, large B-cell, diffuse
Age:	70

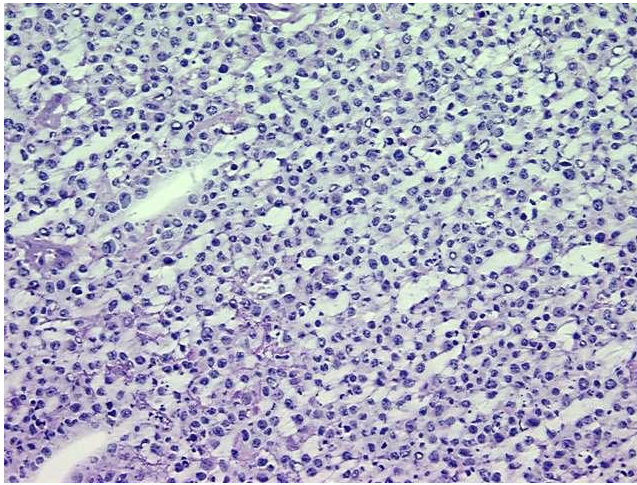

[View online »](#)

Gender:	Male
Tumor Grade:	See pathology report
Minimum Stage Grouping:	IE
T (Extent of Primary Tumor):	Not applicable
N (Lymph node metastasis):	Not applicable
M (Distant metastasis):	Not applicable
Diagnostic Test Results:	Hale colloidal iron stain,Reported as Performed or Reviewed; CD3 ~ Leu4 ~ UCHT1 ! by FC,Negative; Cytokeratin (Pan) ~ Keratin, Pan ! by IHC,Negative; CD19 ~ B4 ~ Leu12 ! by IHC,Positive; CD22 ~ Leu14 ! by IHC,Positive; Kappa light chain ! by I
Storage:	Store tissue total RNA at -80°C.
Stability:	These products are stable for one year from date of shipping when stored at -80°C without repeated freeze/thaws.

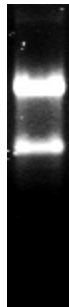
Product images:



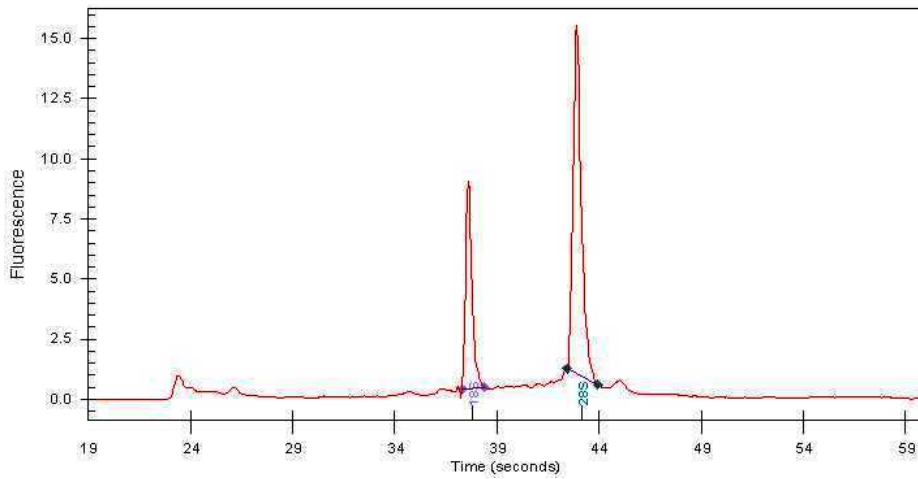
4x Image



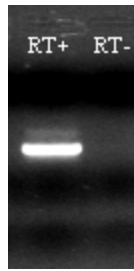
20x Image



RNA Gel Image



RNA Electropherogram Image



RNA RT-PCR Image