

## Product datasheet for **CR562276**

### Tissue Total RNA, Lung

#### Product data:

Product Type:	Total RNA
Disease State:	Cancer
Diagnosis Category:	Lung Cancer
Tissue:	Lung
Frozen Sample ID:	FR0002A109
Case ID:	CI7000000077
Prep:	1
Vial ID:	RN00001253
Tissue of Origin:	Lung
Site of Finding:	Lung
Appearance:	Tumor
Sample Diagnosis (from Pathology Verification):	Carcinoma of lung, large cell
Normal:	0%
Lesional:	10%
Tumor:	80%
Tumor Hypo/Acellular Stroma:	10%
Tumor Hypercellular Stroma:	0%
Necrosis:	0%
Pathology Verification notes from H&E review:	lesion: marked chronic inflammation with no normal architecture
Bioanalyzer Ratio (28S/18S):	1.16



[View online »](#)

**CASE Diagnosis (from medical center path report):** Carcinoma of lung, large cell

**Age:** 81

**Gender:** Male

**Race:** White or Caucasian

**Tumor Grade:** AJCC G3: Poorly differentiated

**Minimum Stage Grouping:** IB

**T (Extent of Primary Tumor):** T2

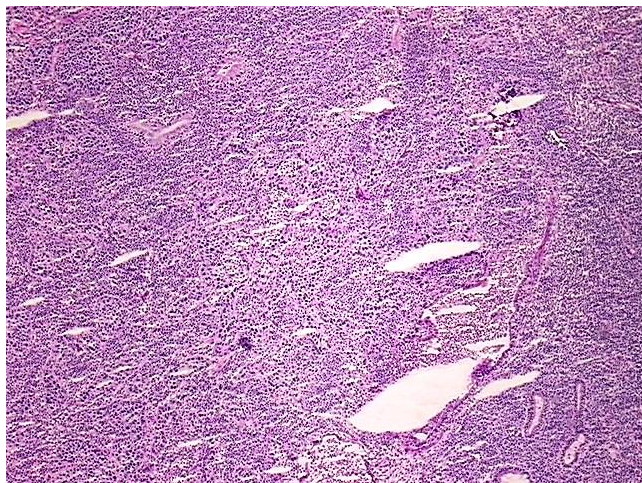
**N (Lymph node metastasis):** N0

**M (Distant metastasis):** MX

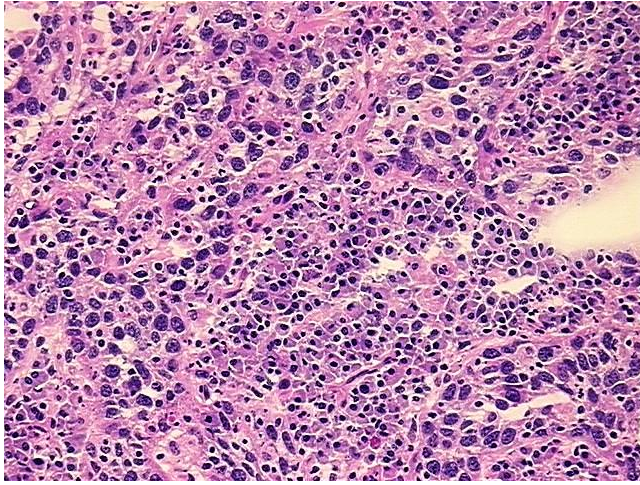
**Storage:** Store tissue total RNA at -80°C.

**Stability:** These products are stable for one year from date of shipping when stored at -80°C without repeated freeze/thaws.

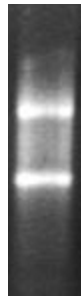
### Product images:



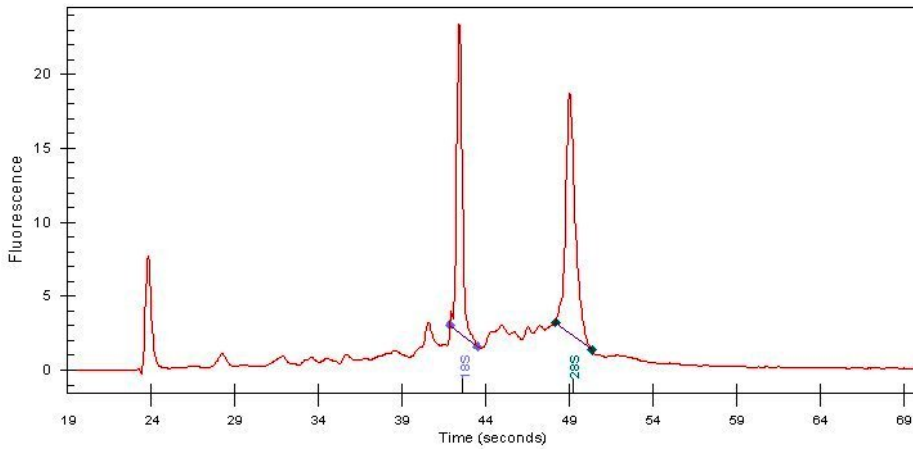
4x Image



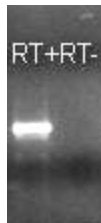
20x Image



RNA Gel Image



RNA Electropherogram Image



RNA RT-PCR Image