

## Product datasheet for CR562242

### Tissue Total RNA, Uterus

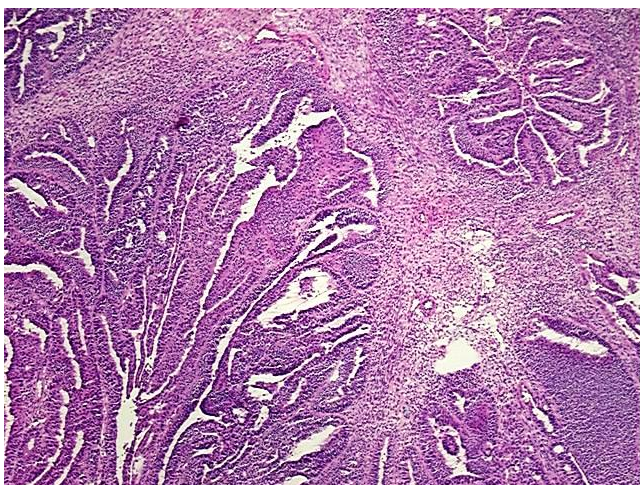
#### Product data:

Product Type:	Total RNA
Disease State:	Cancer
Diagnosis Category:	Endometrial Cancer
Tissue:	Uterus
Frozen Sample ID:	FR000003CF
Case ID:	CU0000000099
Prep:	1
Vial ID:	RN00000061
Tissue of Origin:	Uterus
Site of Finding:	Uterus
Appearance:	Tumor
Sample Diagnosis (from Pathology Verification):	Adenocarcinoma of endometrium, endometrioid
Normal:	0%
Lesional:	0%
Tumor:	80%
Tumor Hypo/Acellular Stroma:	20%
Tumor Hypercellular Stroma:	0%
Necrosis:	0%
Bioanalyzer Ratio (28S/18S):	1.48
CASE Diagnosis (from medical center path report):	Adenocarcinoma of endometrium, endometrioid
Age:	75

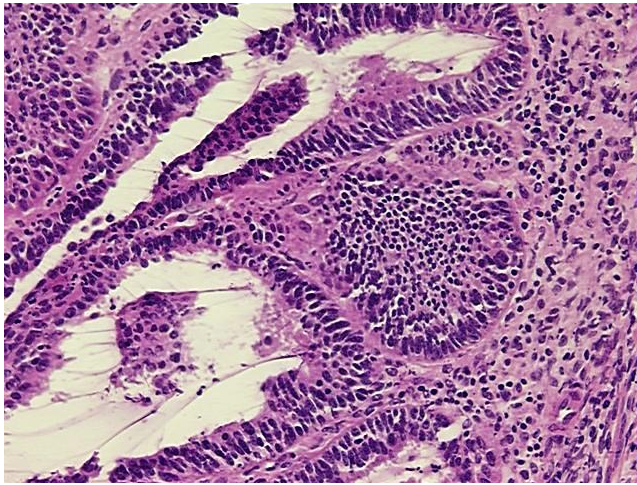

[View online »](#)

Gender:	Female
Tumor Grade:	FIGO G2: Moderately differentiated
Minimum Stage Grouping:	IB
T (Extent of Primary Tumor):	T1b
N (Lymph node metastasis):	N0
M (Distant metastasis):	MX
Storage:	Store tissue total RNA at -80°C.
Stability:	These products are stable for one year from date of shipping when stored at -80°C without repeated freeze/thaws.

### Product images:



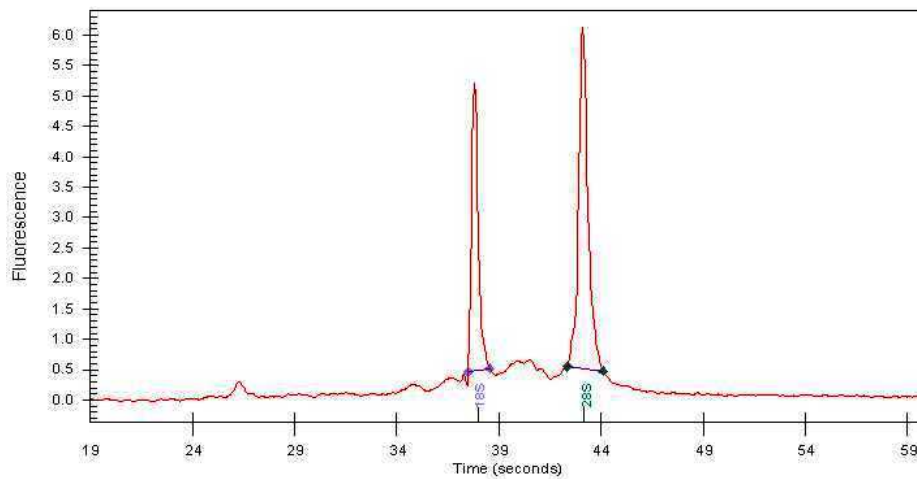
4x Image



20x Image



RNA Gel Image



RNA Electropherogram Image



RNA RT-PCR Image