

## Product datasheet for **CR562194**

### Tissue Total RNA, Kidney

#### Product data:

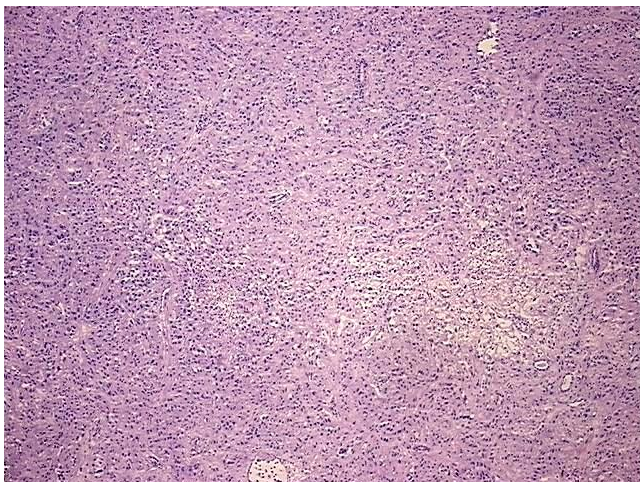
Product Type:	Total RNA
Disease State:	Cancer
Diagnosis Category:	Renal Cell Carcinoma
Tissue:	Kidney
Frozen Sample ID:	FR5B33EE84
Case ID:	CU0000009324
Prep:	1
Vial ID:	RN00001A1A
Tissue of Origin:	Kidney
Site of Finding:	Kidney
Appearance:	Tumor
Sample Diagnosis (from Pathology Verification):	Carcinoma of kidney, renal cell, sarcomatoid
Normal:	0%
Lesional:	0%
Tumor:	95%
Tumor Hypo/Acellular Stroma:	2%
Tumor Hypercellular Stroma:	3%
Necrosis:	0%
Pathology Verification notes from H&E review:	Tumor Stroma (Cellular): Inflammatory cells; Tumor Stroma (Hypo/Acellular): Fibrosis
Bioanalyzer Ratio (28S/18S):	2.03



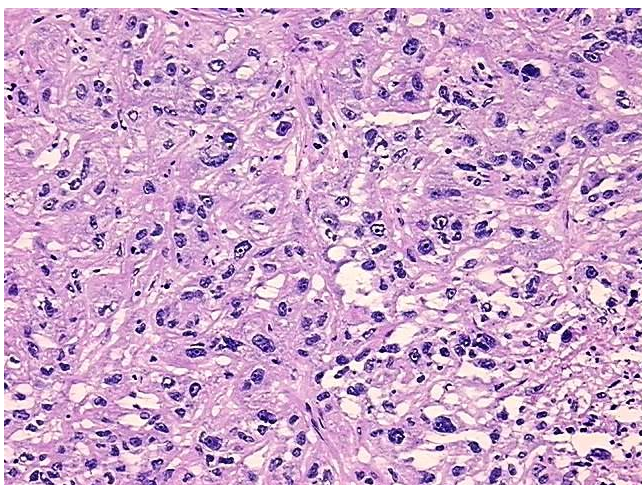
[View online »](#)

<b>CASE Diagnosis (from medical center path report):</b>	Carcinoma of kidney, renal cell, sarcomatoid
<b>Age:</b>	51
<b>Gender:</b>	Male
<b>Tumor Grade:</b>	Fuhrman G4: Nuclei bizarre and multilobated
<b>Minimum Stage Grouping:</b>	IV
<b>T (Extent of Primary Tumor):</b>	T3
<b>N (Lymph node metastasis):</b>	N2
<b>M (Distant metastasis):</b>	M1
<b>Diagnostic Test Results:</b>	CD227 ~ MUC1 ~ EMA ~ CA15-3 ! by IHC,Positive; S100 protein,Negative; HMB45 melanoma antigen ~ GP100 ! by IHC,Negative; von Willebrand Factor Antigen, plasma ~ Ristocetin Cofactor (RCF), plasma,Negative; Cytokeratin CAM5.2 ~ CAM5.2 ! by IHC,Pos
<b>Storage:</b>	Store tissue total RNA at -80°C.
<b>Stability:</b>	These products are stable for one year from date of shipping when stored at -80°C without repeated freeze/thaws.

### Product images:



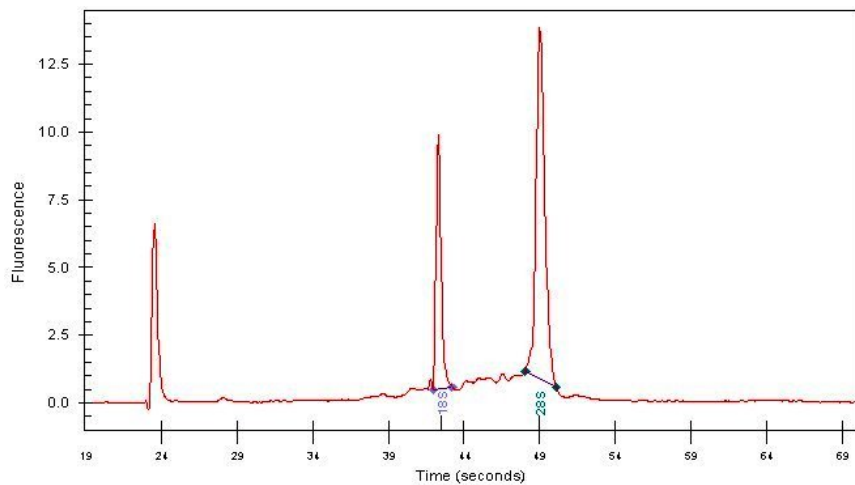
4x Image



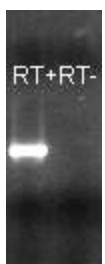
20x Image



RNA Gel Image



RNA Electropherogram Image



RNA RT-PCR Image