

## Product datasheet for CR562179

### Tissue Total RNA, Bone

#### Product data:

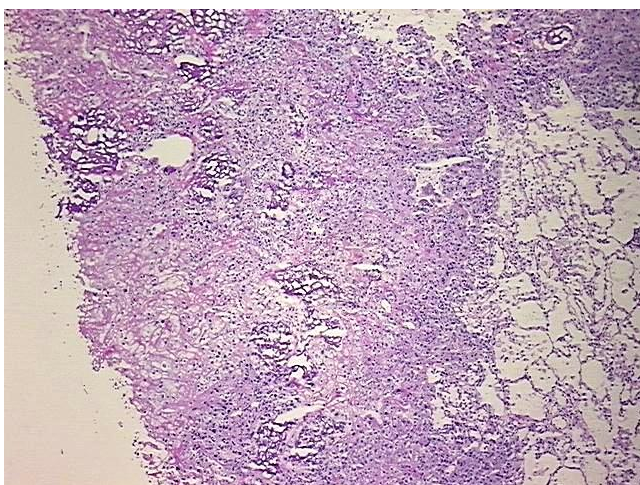
Product Type:	Total RNA
Disease State:	Cancer
Diagnosis Category:	Sarcoma
Tissue:	Bone
Frozen Sample ID:	FR0002BD1E
Case ID:	CU0000009398
Prep:	1
Vial ID:	RN00001474
Tissue of Origin:	Bone
Site of Finding:	Lung
Appearance:	Tumor
Sample Diagnosis (from Pathology Verification):	Osteosarcoma, metastatic
Normal:	30%
Lesional:	0%
Tumor:	50%
Tumor Hypo/Acellular Stroma:	10%
Tumor Hypercellular Stroma:	10%
Necrosis:	0%
Pathology Verification notes from H&E review:	tumor acellular stroma contains osteoid material
Bioanalyzer Ratio (28S/18S):	1.22



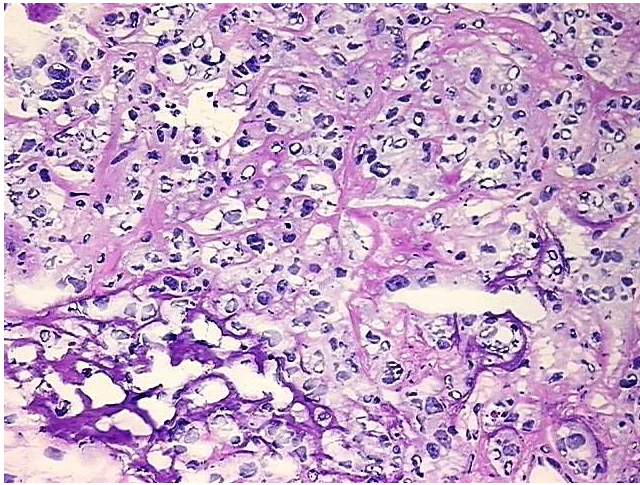
[View online »](#)

CASE Diagnosis (from medical center path report):	Osteosarcoma, metastatic
Age:	20
Gender:	Female
Tumor Grade:	Not Reported
Minimum Stage Grouping:	IVA
T (Extent of Primary Tumor):	TX
N (Lymph node metastasis):	NX
M (Distant metastasis):	M1a
Storage:	Store tissue total RNA at -80°C.
Stability:	These products are stable for one year from date of shipping when stored at -80°C without repeated freeze/thaws.

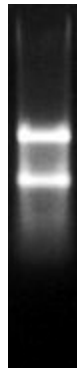
### Product images:



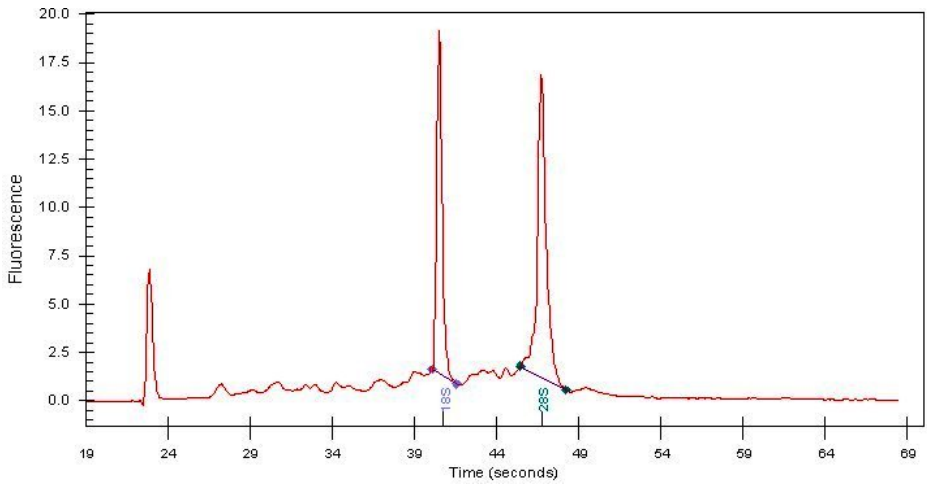
4x Image



20x Image



RNA Gel Image



RNA Electropherogram Image



RNA RT-PCR Image