

## Product datasheet for CR562176

### Tissue Total RNA, Soft tissue

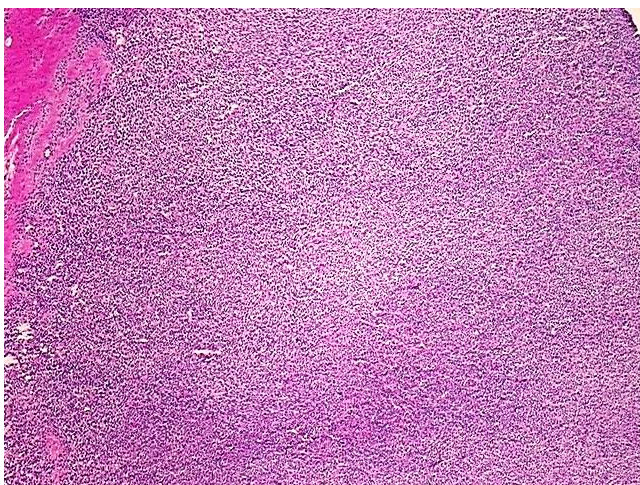
#### Product data:

Product Type:	Total RNA
Disease State:	Cancer
Diagnosis Category:	Sarcoma
Tissue:	Soft tissue
Frozen Sample ID:	FR0002BF45
Case ID:	CU0000009417
Prep:	1
Vial ID:	RN00003262
Tissue of Origin:	Soft tissue
Site of Finding:	Foot
Appearance:	Tumor
Sample Diagnosis (from Pathology Verification):	Sarcoma, synovial
Normal:	15%
Lesional:	0%
Tumor:	80%
Tumor Hypo/Acellular Stroma:	5%
Tumor Hypercellular Stroma:	0%
Necrosis:	0%
Bioanalyzer Ratio (28S/18S):	1.48
CASE Diagnosis (from medical center path report):	Sarcoma, synovial
Age:	37

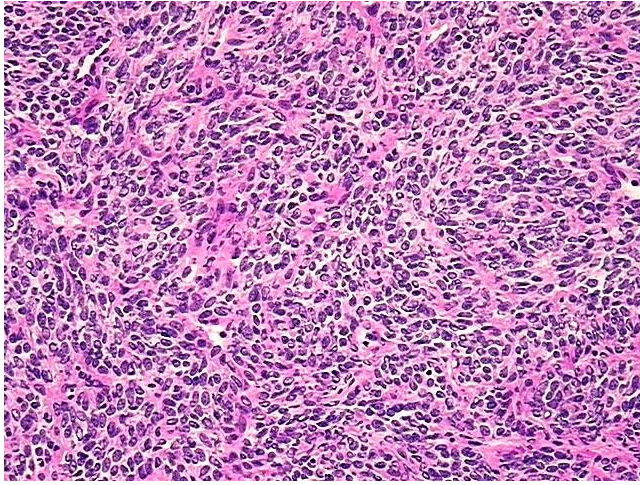


[View online »](#)

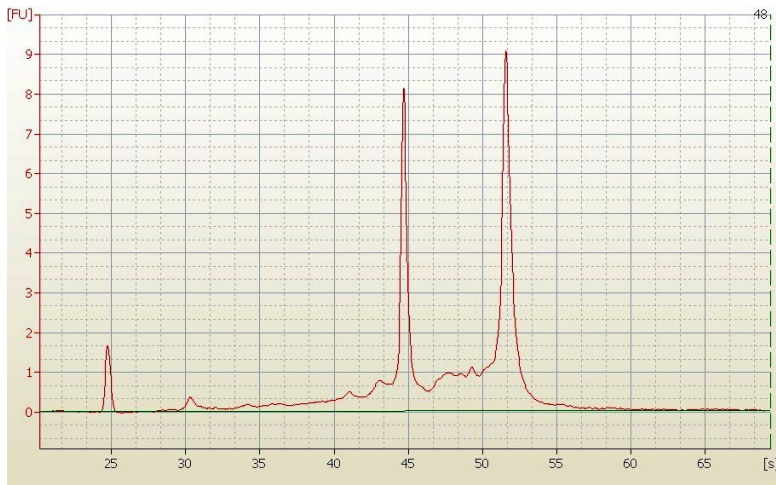
Gender:	Female
Tumor Grade:	Not Reported
Minimum Stage Grouping:	I
T (Extent of Primary Tumor):	T1b
N (Lymph node metastasis):	NX
M (Distant metastasis):	MX
Storage:	Store tissue total RNA at -80°C.
Stability:	These products are stable for one year from date of shipping when stored at -80°C without repeated freeze/thaws.

**Product images:**

4x Image



20x Image



RNA Electropherogram Image



RNA RT-PCR Image