

## Product datasheet for CR562155

### Tissue Total RNA, Kidney

#### Product data:

Product Type:	Total RNA
Disease State:	Cancer
Diagnosis Category:	Renal Cell Carcinoma
Tissue:	Kidney
Frozen Sample ID:	FR5B33BCBC
Case ID:	CU0000006915
Prep:	1
Vial ID:	RN00001A33
Tissue of Origin:	Kidney
Site of Finding:	Kidney
Appearance:	Tumor
Sample Diagnosis (from Pathology Verification):	Carcinoma of kidney, renal cell, clear cell
Normal:	0%
Lesional:	0%
Tumor:	95%
Tumor Hypo/Acellular Stroma:	0%
Tumor Hypercellular Stroma:	5%
Necrosis:	0%
Pathology Verification notes from H&E review:	Tumor Stroma (Hypo/Acellular): Fibrosis; Inflammation: Mild Lymphoplasmacytic infiltrate
Bioanalyzer Ratio (28S/18S):	1.42



[View online »](#)

**CASE Diagnosis (from medical center path report):** Carcinoma of kidney, renal cell, clear cell

**Age:** 53

**Gender:** Female

**Tumor Grade:** Fuhrman G1: Nuclei round, uniform

**Minimum Stage Grouping:** I

**T (Extent of Primary Tumor):** T1b

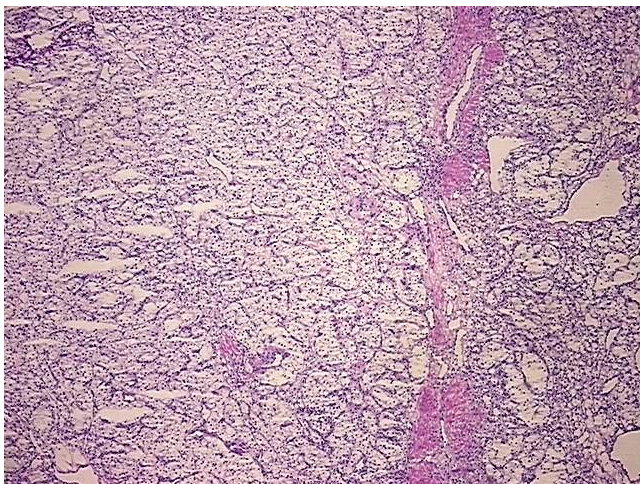
**N (Lymph node metastasis):** NX

**M (Distant metastasis):** MX

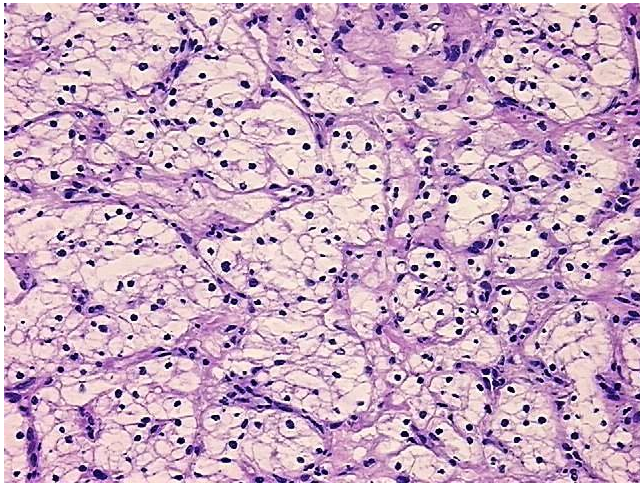
**Storage:** Store tissue total RNA at -80°C.

**Stability:** These products are stable for one year from date of shipping when stored at -80°C without repeated freeze/thaws.

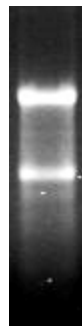
### Product images:



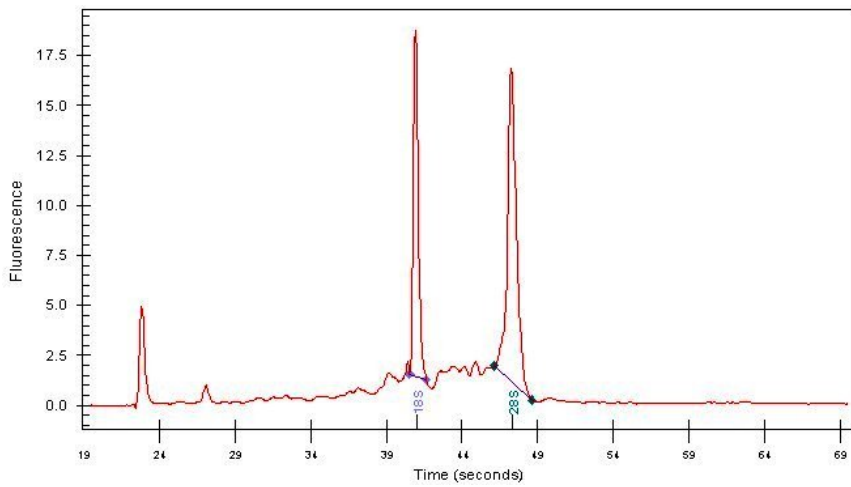
4x Image



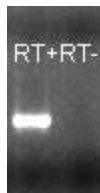
20x Image



RNA Gel Image



RNA Electropherogram Image



RNA RT-PCR Image