

## Product datasheet for CR562143

### Tissue Total RNA, Ovary: bilateral

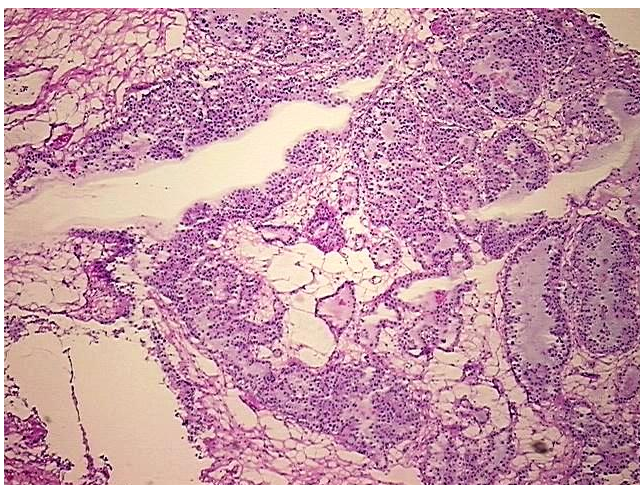
#### Product data:

Product Type:	Total RNA
Disease State:	Cancer
Diagnosis Category:	Ovarian Cancer
Tissue:	Ovary
Frozen Sample ID:	FR71B9C74D
Case ID:	CU0000011143
Prep:	1
Vial ID:	RN000016F6
Tissue of Origin:	Ovary: bilateral
Site of Finding:	Ovary: left
Appearance:	Tumor
Sample Diagnosis (from Pathology Verification):	Adenocarcinoma of ovary, clear cell
Normal:	0%
Lesional:	0%
Tumor:	65%
Tumor Hypo/Acellular Stroma:	5%
Tumor Hypercellular Stroma:	30%
Necrosis:	0%
Bioanalyzer Ratio (28S/18S):	1.64
CASE Diagnosis (from medical center path report):	Adenocarcinoma of ovary, clear cell
Age:	47

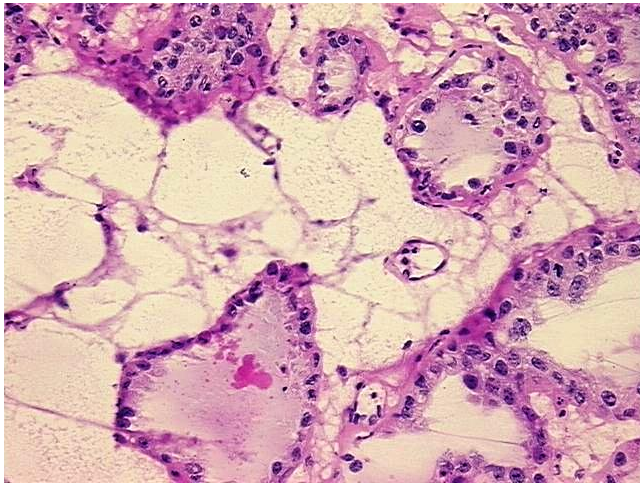


[View online »](#)

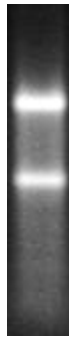
Gender:	Female
Tumor Grade:	FIGO G3: Poorly differentiated
Minimum Stage Grouping:	IIIC
T (Extent of Primary Tumor):	T3c
N (Lymph node metastasis):	NX
M (Distant metastasis):	MX
Storage:	Store tissue total RNA at -80°C.
Stability:	These products are stable for one year from date of shipping when stored at -80°C without repeated freeze/thaws.

**Product images:**

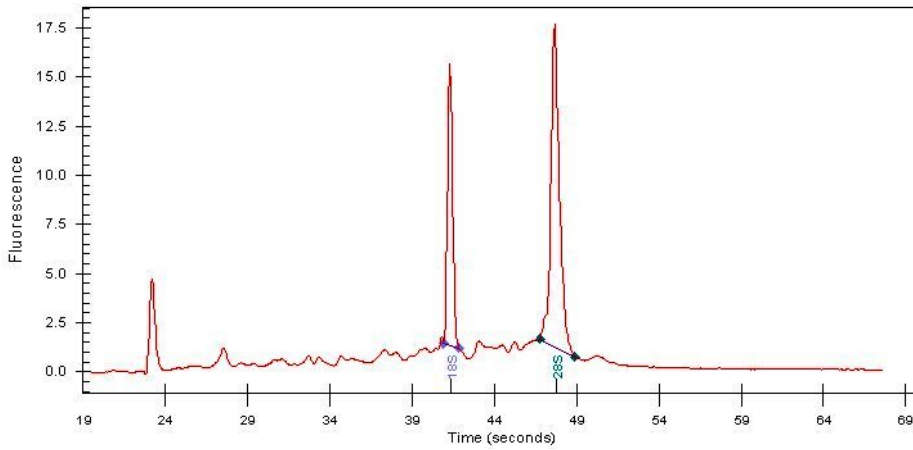
4x Image



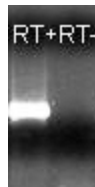
20x Image



RNA Gel Image



RNA Electropherogram Image



RNA RT-PCR Image