

Product datasheet for CR562141

Tissue Total RNA, Colon: sigmoid

Product data:

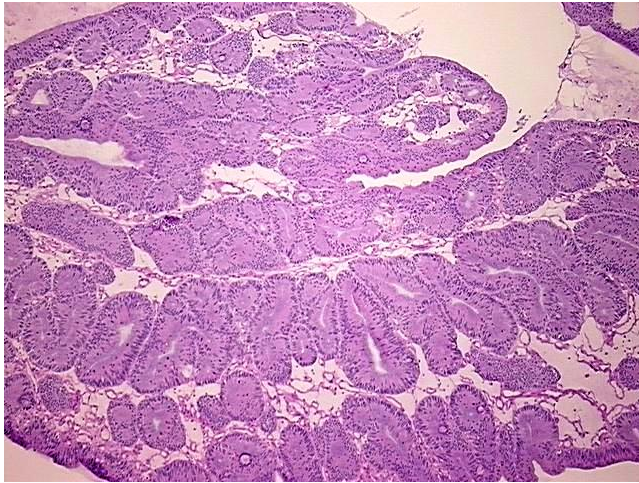
Product Type:	Total RNA
Disease State:	Cancer
Diagnosis Category:	Colorectal Cancer
Tissue:	Colon
Frozen Sample ID:	FR00031345
Case ID:	CU0000011150
Prep:	1
Vial ID:	RN00001712
Tissue of Origin:	Colon: sigmoid
Site of Finding:	Colon: sigmoid
Appearance:	Tumor
Sample Diagnosis (from Pathology Verification):	Adenocarcinoma of colon
Normal:	0%
Lesional:	0%
Tumor:	90%
Tumor Hypo/Acellular Stroma:	10%
Tumor Hypercellular Stroma:	0%
Necrosis:	0%
Pathology Verification notes from H&E review:	cellular tumor stroma: 60% desmoplasia, 40% mixed inflammatory cells
Bioanalyzer Ratio (28S/18S):	1.35



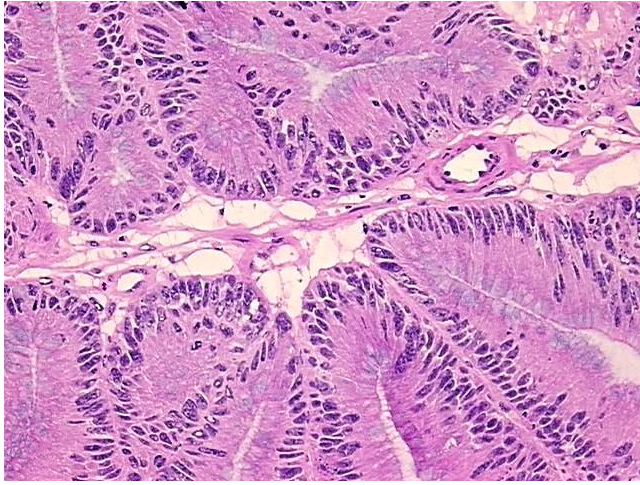
[View online »](#)

CASE Diagnosis (from medical center path report):	Adenocarcinoma of colon
Age:	87
Gender:	Female
Tumor Grade:	AJCC G1: Well differentiated
Minimum Stage Grouping:	I
T (Extent of Primary Tumor):	T1
N (Lymph node metastasis):	N0
M (Distant metastasis):	MX
Storage:	Store tissue total RNA at -80°C.
Stability:	These products are stable for one year from date of shipping when stored at -80°C without repeated freeze/thaws.

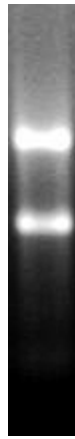
Product images:



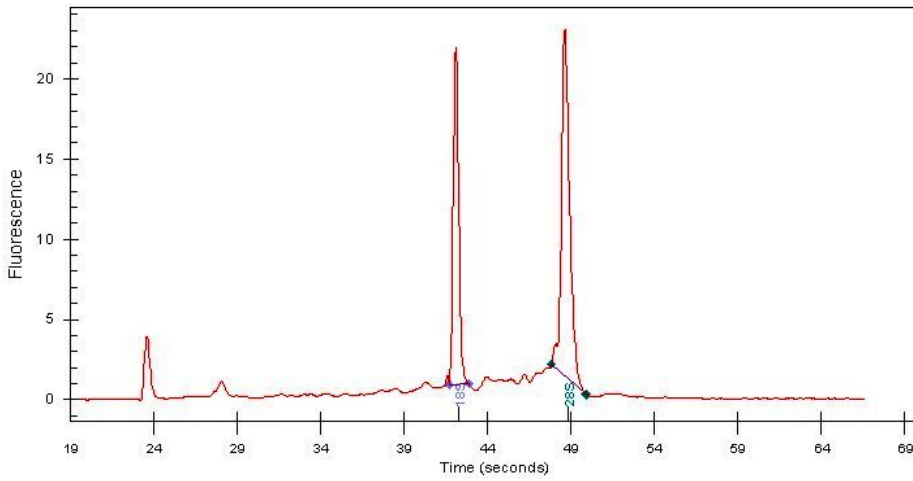
4x Image



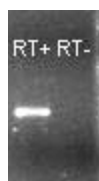
20x Image



RNA Gel Image



RNA Electropherogram Image



RNA RT-PCR Image