

## Product datasheet for CR562125

### Tissue Total RNA, Breast

#### Product data:

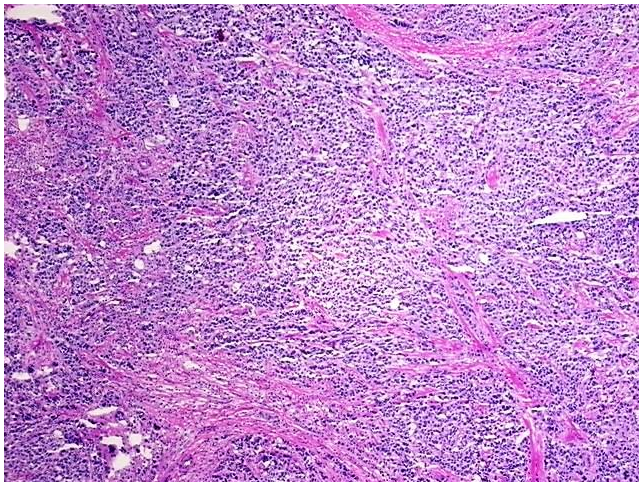
Product Type:	Total RNA
Disease State:	Cancer
Diagnosis Category:	Breast Cancer
Tissue:	Breast
Frozen Sample ID:	FR00032EA8
Case ID:	CU0000011195
Prep:	1
Vial ID:	RN000025CE
Tissue of Origin:	Breast
Site of Finding:	Breast
Appearance:	Tumor
Sample Diagnosis (from Pathology Verification):	Adenocarcinoma of breast, ductal
Normal:	0%
Lesional:	0%
Tumor:	80%
Tumor Hypo/Acellular Stroma:	10%
Tumor Hypercellular Stroma:	10%
Necrosis:	0%
Pathology Verification notes from H&E review:	Tumor Stroma (Cellular): Desmoplastic reaction, Inflammatory cells; Tumor Stroma (Hypo/Acellular): Fibrosis; Inflammation: Mild Mixed inflammatory infiltrate
Bioanalyzer Ratio (28S/18S):	0.9



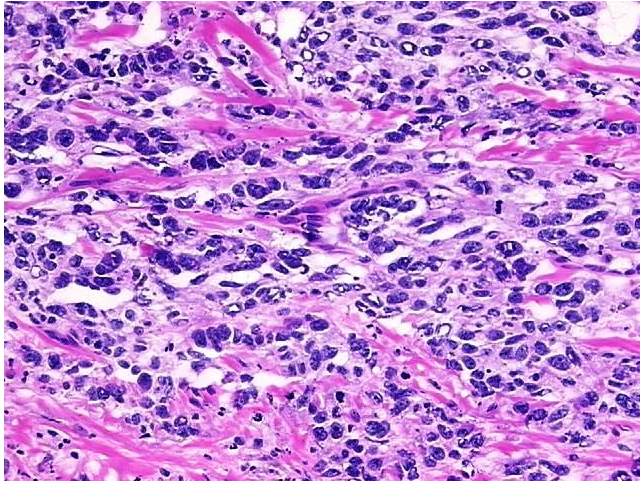
[View online »](#)

<b>CASE Diagnosis (from medical center path report):</b>	Adenocarcinoma of breast, ductal
<b>Age:</b>	48
<b>Gender:</b>	Female
<b>Tumor Grade:</b>	Nottingham G3: 8-9 points High combined grade (unfavorable)
<b>Minimum Stage Grouping:</b>	IIA
<b>T (Extent of Primary Tumor):</b>	T2
<b>N (Lymph node metastasis):</b>	NX
<b>M (Distant metastasis):</b>	MX
<b>Diagnostic Test Results:</b>	Progesterone receptor ~ PR ! by IHC,Negative; Estrogen receptor ~ ER ! by IHC,Negative; HER2 ~ ERBB2 ~ Neu ! by IHC,Negative
<b>Storage:</b>	Store tissue total RNA at -80°C.
<b>Stability:</b>	These products are stable for one year from date of shipping when stored at -80°C without repeated freeze/thaws.

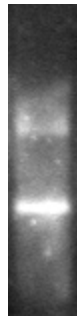
### Product images:



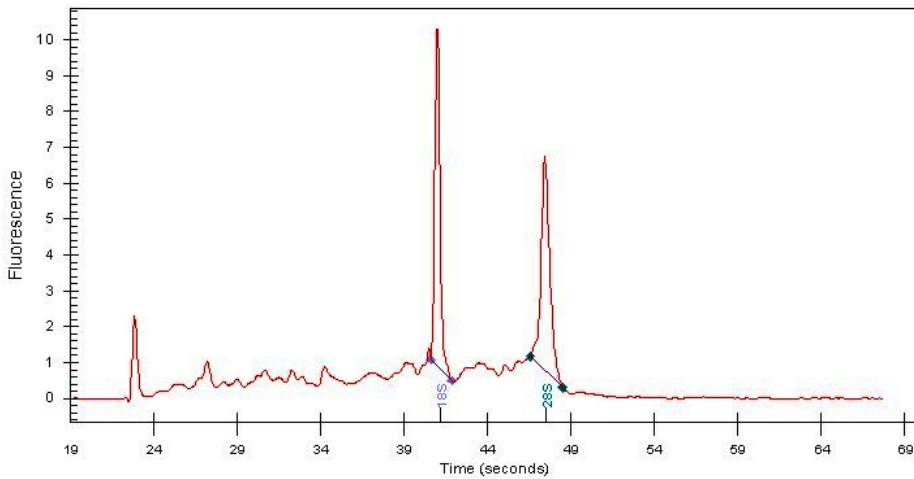
4x Image



20x Image



RNA Gel Image



RNA Electropherogram Image



RNA RT-PCR Image