

Product datasheet for CR562116

Tissue Total RNA, Ovary: left

Product data:

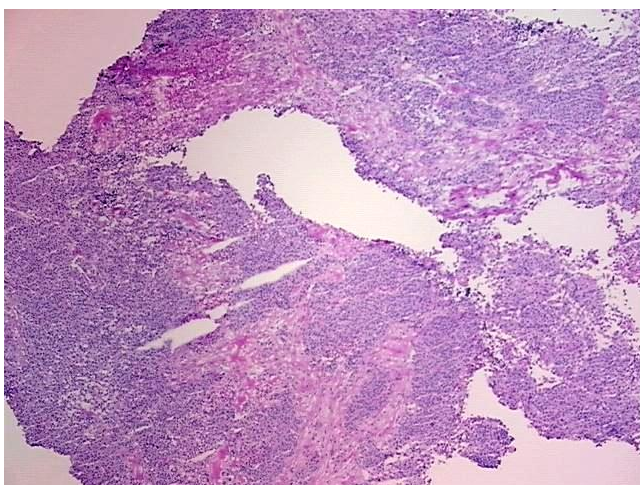
Product Type:	Total RNA
Disease State:	Cancer
Diagnosis Category:	Ovarian Cancer
Tissue:	Ovary
Frozen Sample ID:	FR0002BA4B
Case ID:	CU0000010537
Prep:	2
Vial ID:	RN000033CF
Tissue of Origin:	Ovary: left
Site of Finding:	Ovary: left
Appearance:	Tumor
Sample Diagnosis (from Pathology Verification):	Adenocarcinoma of ovary
Normal:	0%
Lesional:	0%
Tumor:	65%
Tumor Hypo/Acellular Stroma:	0%
Tumor Hypercellular Stroma:	15%
Necrosis:	20%
Pathology Verification notes from H&E review:	tumor stroma contains fibroblasts
Bioanalyzer Ratio (28S/18S):	1.03



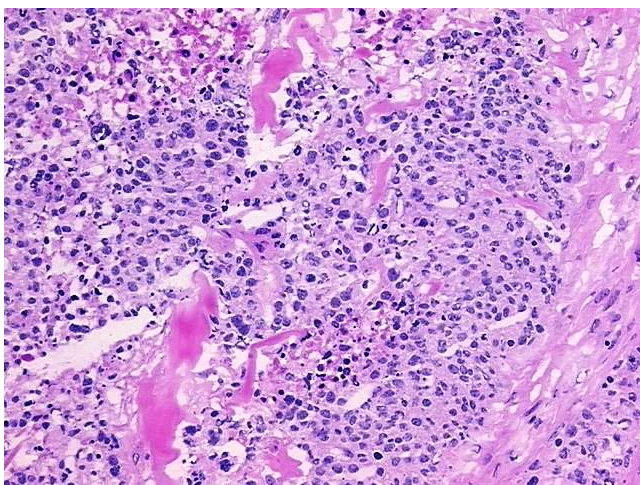
[View online »](#)

CASE Diagnosis (from medical center path report):	Adenocarcinoma of ovary
Age:	73
Gender:	Female
Tumor Grade:	FIGO G3: Poorly differentiated
Minimum Stage Grouping:	IIA
T (Extent of Primary Tumor):	T2a
N (Lymph node metastasis):	NX
M (Distant metastasis):	MX
Storage:	Store tissue total RNA at -80°C.
Stability:	These products are stable for one year from date of shipping when stored at -80°C without repeated freeze/thaws.

Product images:



4x Image



20x Image