

Product datasheet for CR562113

Tissue Total RNA, Lymphoid tissue

Product data:

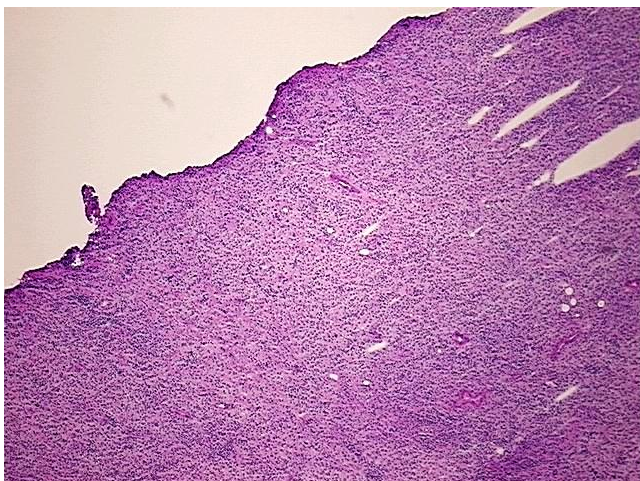
Product Type:	Total RNA
Disease State:	Cancer
Diagnosis Category:	Lymphoma
Tissue:	Lymphoid tissue
Frozen Sample ID:	FR0002D3F1
Case ID:	CU0000011011
Prep:	1
Vial ID:	RN000016BD
Tissue of Origin:	Lymphoid tissue
Site of Finding:	Lymph node
Appearance:	Tumor
Sample Diagnosis (from Pathology Verification):	Lymphoma, large B-cell, diffuse
Normal:	0%
Lesional:	0%
Tumor:	90%
Tumor Hypo/Acellular Stroma:	10%
Tumor Hypercellular Stroma:	0%
Necrosis:	0%
Bioanalyzer Ratio (28S/18S):	1.34
CASE Diagnosis (from medical center path report):	Lymphoma, large B-cell, diffuse
Age:	42



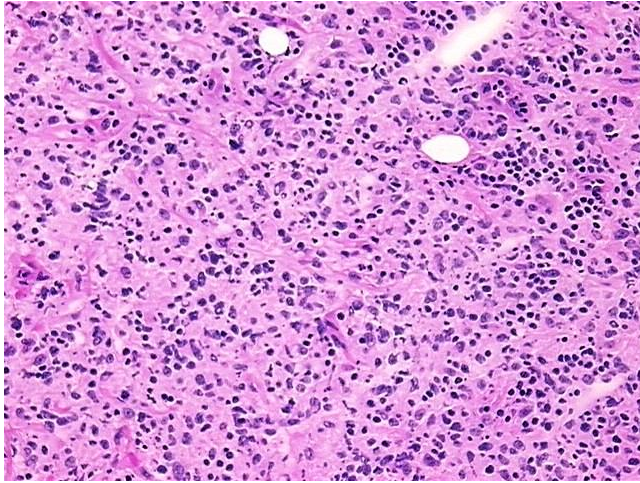
[View online »](#)

Gender:	Female
Tumor Grade:	See pathology report
Minimum Stage Grouping:	I
T (Extent of Primary Tumor):	Not applicable
N (Lymph node metastasis):	Not applicable
M (Distant metastasis):	Not applicable
Diagnostic Test Results:	CD3 ~ Leu4 ~ UCHT1 ! by IHC,Negative; BCL2 oncoprotein ! by IHC,Positive; CD45 ~ Leukocyte common antigen ! by IHC,Positive; CD10 ~ CALLA ~ Common ALL antigen ! by IHC,Positive; CD30 ~ Ki1 ! by IHC,Negative; CD15 ~ Lewis X ~ Leu M1 ! by IH
Storage:	Store tissue total RNA at -80°C.
Stability:	These products are stable for one year from date of shipping when stored at -80°C without repeated freeze/thaws.

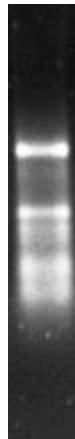
Product images:



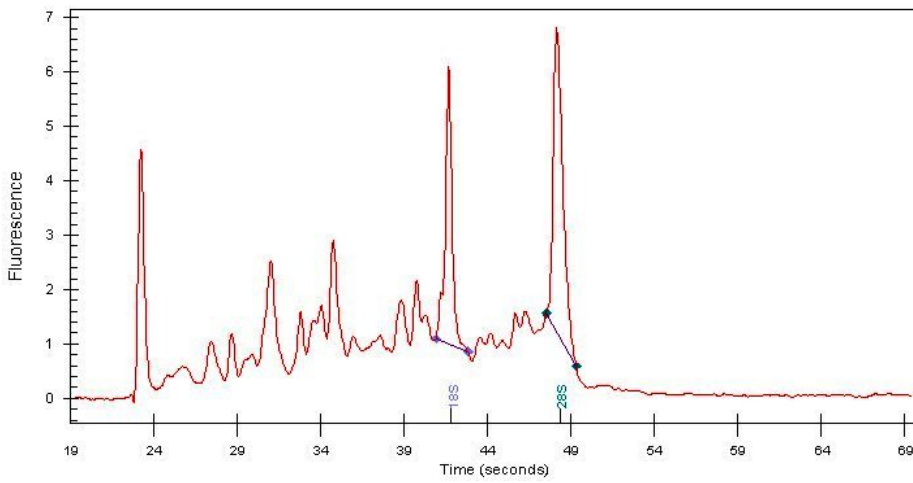
4x Image



20x Image



RNA Gel Image



RNA Electropherogram Image



RNA RT-PCR Image