

Product datasheet for CR562108

Tissue Total RNA, Lymphoid tissue

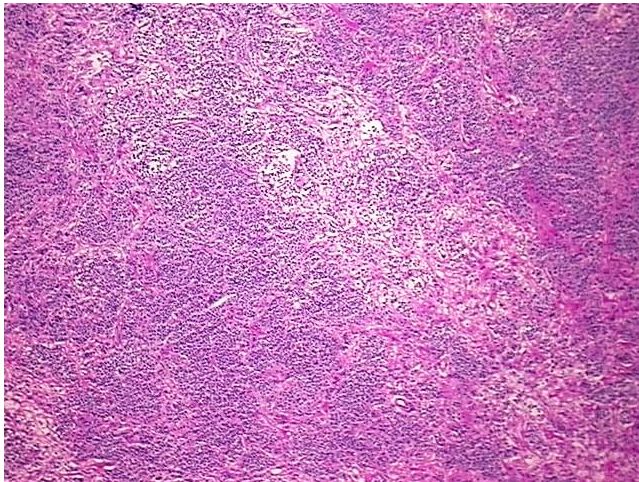
Product data:

Product Type:	Total RNA
Disease State:	Cancer
Diagnosis Category:	Lymphoma
Tissue:	Lymphoid tissue
Frozen Sample ID:	FR0003119B
Case ID:	CU0000011130
Prep:	1
Vial ID:	RN000016BC
Tissue of Origin:	Lymphoid tissue
Site of Finding:	Spleen
Appearance:	Tumor
Sample Diagnosis (from Pathology Verification):	Lymphoma, large B-cell, diffuse
Normal:	10%
Lesional:	0%
Tumor:	80%
Tumor Hypo/Acellular Stroma:	10%
Tumor Hypercellular Stroma:	0%
Necrosis:	0%
Bioanalyzer Ratio (28S/18S):	1.52
CASE Diagnosis (from medical center path report):	Lymphoma, large B-cell, diffuse
Age:	42

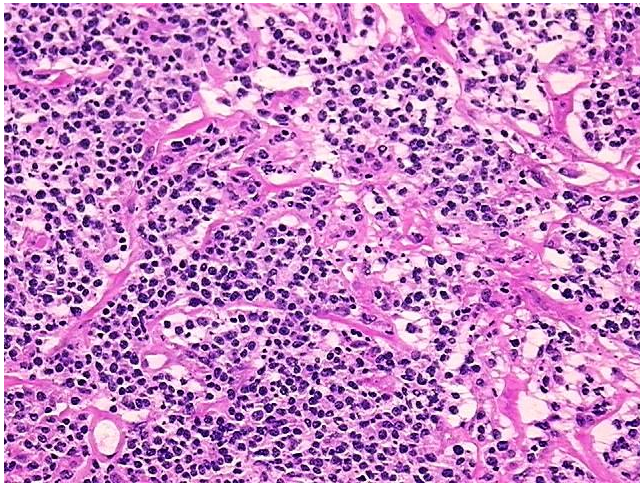


[View online »](#)

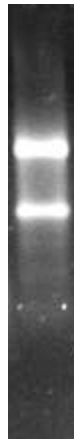
Gender:	Male
Tumor Grade:	See pathology report
Minimum Stage Grouping:	IE
T (Extent of Primary Tumor):	Not applicable
N (Lymph node metastasis):	Not applicable
M (Distant metastasis):	Not applicable
Diagnostic Test Results:	ALK1 ~ NPM-ALK fusion ~ p80 ! by IHC,Negative; CD3 ~ Leu4 ~ UCHT1 ! by IHC,Negative; CD45RO ~ A6 ~ UCHL1 ! by IHC,Negative; Ki67 ~ MIB1 ! by IHC,Positive; CD5 ~ Leu1 ! by IHC,Positive; CD79a ~ Ig alpha ! by IHC,Positive; Cyclin D1 ~ BC
Storage:	Store tissue total RNA at -80°C.
Stability:	These products are stable for one year from date of shipping when stored at -80°C without repeated freeze/thaws.

Product images:

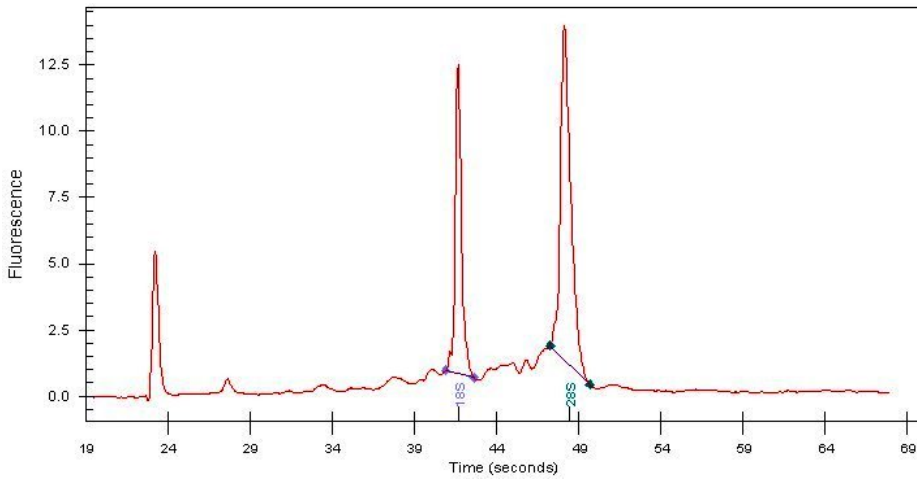
4x Image



20x Image



RNA Gel Image



RNA Electropherogram Image



RNA RT-PCR Image