

## Product datasheet for CR562093

### Tissue Total RNA, Pancreas

#### Product data:

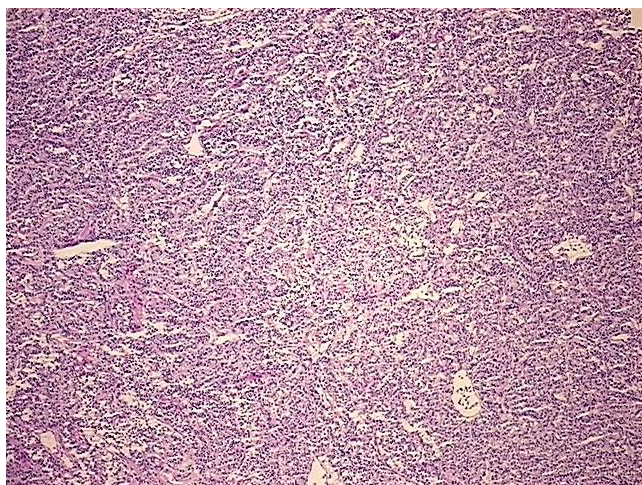
Product Type:	Total RNA
Disease State:	Cancer
Diagnosis Category:	Carcinoid/Neuroendocrine Tumors
Tissue:	Pancreas
Frozen Sample ID:	FR65EE2CF5
Case ID:	CU0000006615
Prep:	1
Vial ID:	RN000015E0
Tissue of Origin:	Pancreas
Site of Finding:	Liver
Appearance:	Tumor
Sample Diagnosis (from Pathology Verification):	Tumor of pancreas, neuroendocrine, metastatic
Normal:	0%
Lesional:	0%
Tumor:	98%
Tumor Hypo/Acellular Stroma:	0%
Tumor Hypercellular Stroma:	2%
Necrosis:	0%
Bioanalyzer Ratio (28S/18S):	1.2
CASE Diagnosis (from medical center path report):	Tumor of pancreas, neuroendocrine
Age:	69



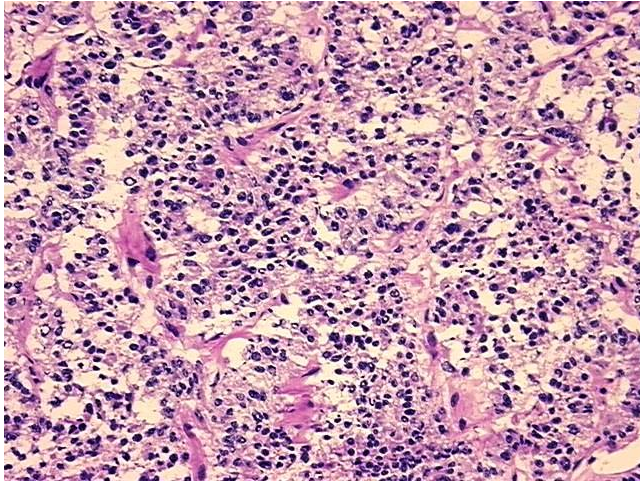
[View online »](#)

Gender:	Female
Tumor Grade:	AJCC G1: Well differentiated
Minimum Stage Grouping:	Not Reported
T (Extent of Primary Tumor):	Not Reported
N (Lymph node metastasis):	Not Reported
M (Distant metastasis):	Not Reported
Diagnostic Test Results:	Synaptophysin ~ SYN ! by IHC,Positive; Neuron specific enolase ~ NSE ! by IHC,Positive; Glucagon ! by IHC,Negative; Gastrin ! by IHC,Negative; Insulin ! by IHC,Negative
Storage:	Store tissue total RNA at -80°C.
Stability:	These products are stable for one year from date of shipping when stored at -80°C without repeated freeze/thaws.

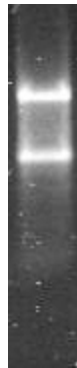
### Product images:



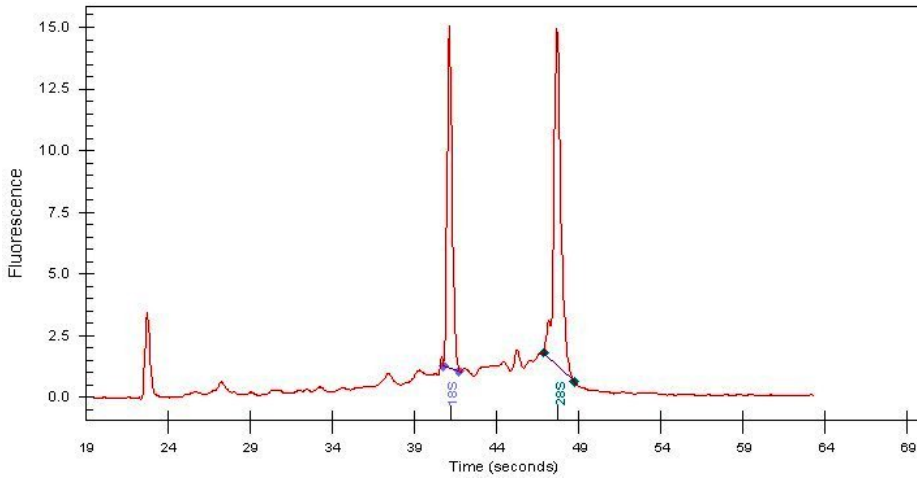
4x Image



20x Image



RNA Gel Image



RNA Electropherogram Image



RNA RT-PCR Image