

## Product datasheet for CR562092

### Tissue Total RNA, Ovary

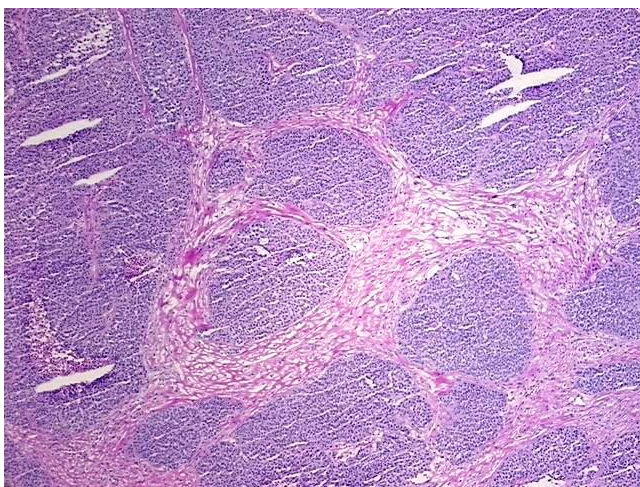
#### Product data:

Product Type:	Total RNA
Disease State:	Cancer
Diagnosis Category:	Ovarian Cancer
Tissue:	Ovary
Frozen Sample ID:	FR0001DA45
Case ID:	CU0000006563
Prep:	1
Vial ID:	RN000039D3
Tissue of Origin:	Ovary
Site of Finding:	Ovary
Appearance:	Tumor
Sample Diagnosis (from Pathology Verification):	Adenocarcinoma of ovary, papillary serous
Normal:	0%
Lesional:	0%
Tumor:	80%
Tumor Hypo/Acellular Stroma:	10%
Tumor Hypercellular Stroma:	0%
Necrosis:	10%
Bioanalyzer Ratio (28S/18S):	1.28
CASE Diagnosis (from medical center path report):	Adenocarcinoma of ovary, papillary serous
Age:	37

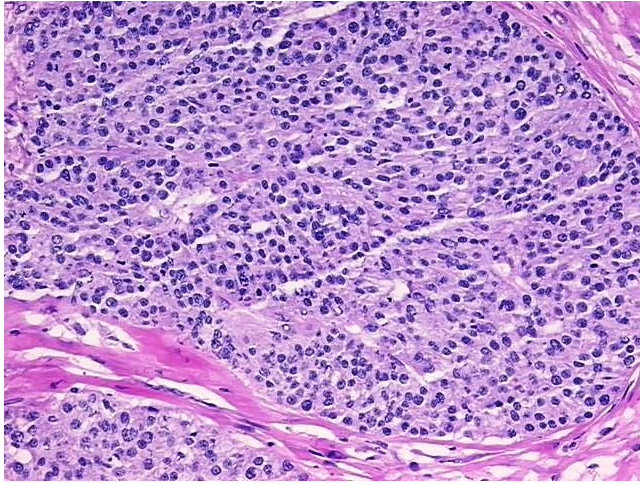


[View online »](#)

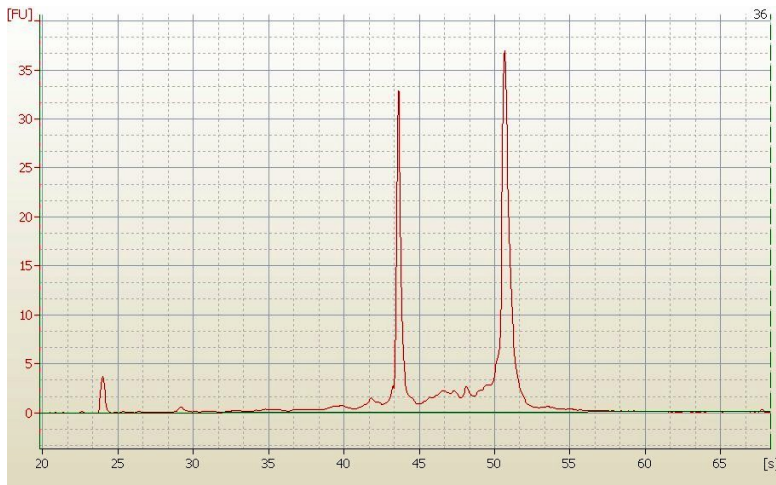
Gender:	Female
Tumor Grade:	FIGO G3: Poorly differentiated
Minimum Stage Grouping:	IIIC
T (Extent of Primary Tumor):	T3c
N (Lymph node metastasis):	NX
M (Distant metastasis):	MX
Storage:	Store tissue total RNA at -80°C.
Stability:	These products are stable for one year from date of shipping when stored at -80°C without repeated freeze/thaws.

**Product images:**

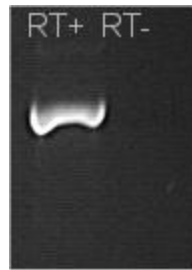
4x Image



20x Image



RNA Electropherogram Image



RNA RT-PCR Image