

Product datasheet for CR562080

Tissue Total RNA, Endometrium

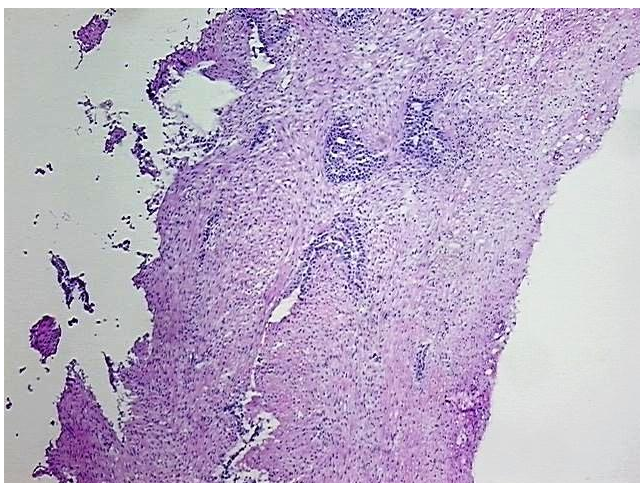
Product data:

Product Type:	Total RNA
Disease State:	Cancer
Diagnosis Category:	Endometrial Cancer
Tissue:	Endometrium
Frozen Sample ID:	FR65EE2D07
Case ID:	CU0000006614
Prep:	1
Vial ID:	RN00003146
Tissue of Origin:	Endometrium
Site of Finding:	Omentum
Appearance:	Tumor
Sample Diagnosis (from Pathology Verification):	Adenocarcinoma of endometrium, papillary serous, metastatic
Normal:	0%
Lesional:	0%
Tumor:	60%
Tumor Hypo/Acellular Stroma:	40%
Tumor Hypercellular Stroma:	0%
Necrosis:	0%
Bioanalyzer Ratio (28S/18S):	1.15
CASE Diagnosis (from medical center path report):	Adenocarcinoma of endometrium, papillary serous
Age:	66

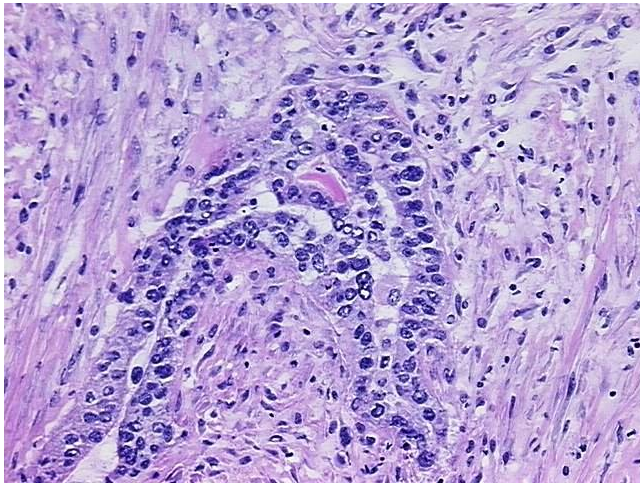


[View online »](#)

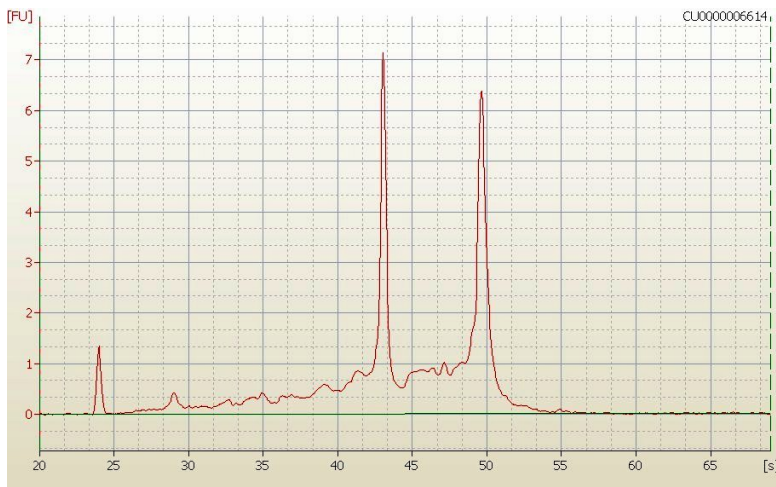
Gender:	Female
Tumor Grade:	FIGO G3: Poorly differentiated
Minimum Stage Grouping:	IVB
T (Extent of Primary Tumor):	T3b
N (Lymph node metastasis):	NX
M (Distant metastasis):	M1
Diagnostic Test Results:	Progesterone receptor ~ PR ! by IHC,Negative; Estrogen receptor ~ ER ! by IHC,Negative
Storage:	Store tissue total RNA at -80°C.
Stability:	These products are stable for one year from date of shipping when stored at -80°C without repeated freeze/thaws.

Product images:

4x Image



20x Image



RNA Electropherogram Image



RNA RT-PCR Image