

## Product datasheet for CR562073

### Tissue Total RNA, Myeloid tissue

#### Product data:

Product Type:	Total RNA
Disease State:	Cancer
Diagnosis Category:	Leukemia
Tissue:	Myeloid tissue
Frozen Sample ID:	FR00022506
Case ID:	CU00000006636
Prep:	1
Vial ID:	RN00001B90
Tissue of Origin:	Myeloid tissue
Site of Finding:	Spleen
Appearance:	Tumor
Sample Diagnosis (from Pathology Verification):	Leukemia, acute myeloid
Normal:	0%
Lesional:	80%
Tumor:	20%
Tumor Hypo/Acellular Stroma:	0%
Tumor Hypercellular Stroma:	0%
Necrosis:	0%
Pathology Verification notes from H&E review:	lesion: congestion and focal infarction
Bioanalyzer Ratio (28S/18S):	1.02


[View online »](#)

**CASE Diagnosis (from medical center path report):** Leukemia, acute myeloid

**Age:** 72

**Gender:** Male

**Tumor Grade:** Not Reported

**Minimum Stage** Not Reported

**Grouping:**

**T (Extent of Primary Tumor):** Not Reported

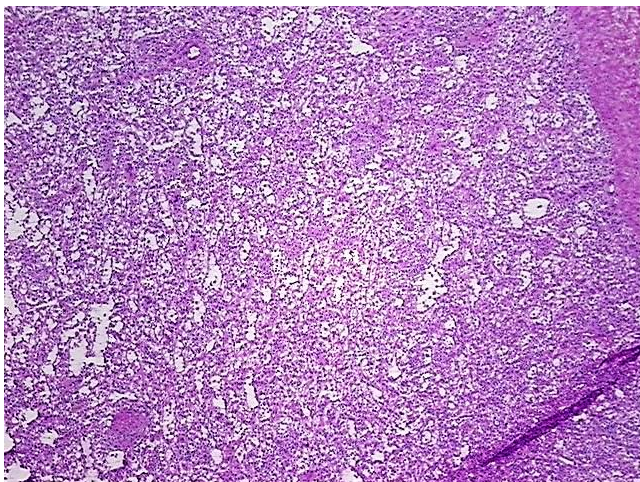
**N (Lymph node metastasis):** Not Reported

**M (Distant metastasis):** Not Reported

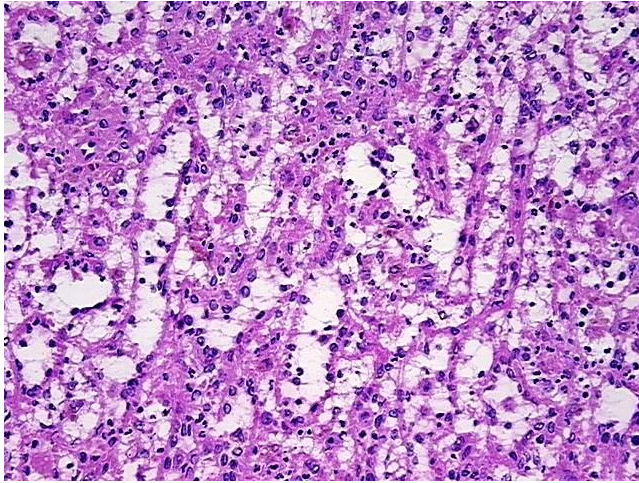
**Storage:** Store tissue total RNA at -80°C.

**Stability:** These products are stable for one year from date of shipping when stored at -80°C without repeated freeze/thaws.

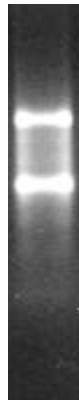
## Product images:



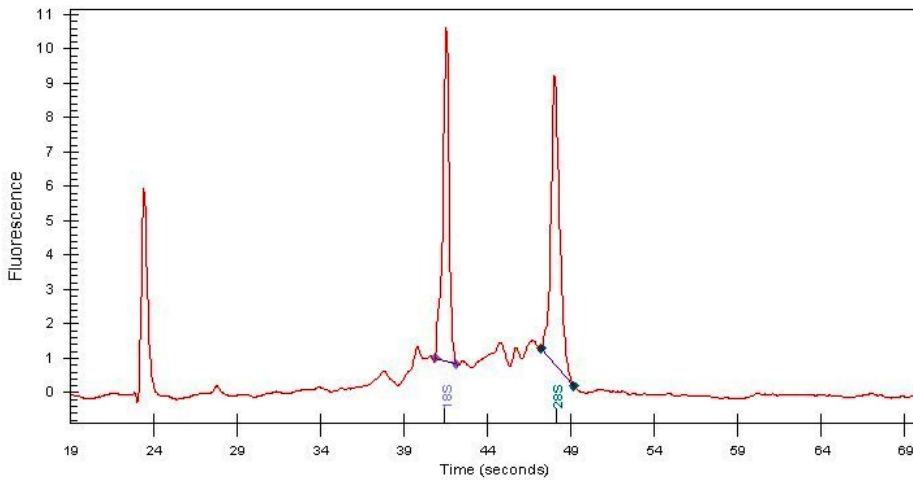
4x Image



20x Image



RNA Gel Image



RNA Electropherogram Image



RNA RT-PCR Image