

Product datasheet for CR562055

Tissue Total RNA, Lymphoid tissue

Product data:

Product Type:	Total RNA
Disease State:	Cancer
Diagnosis Category:	Lymphoma
Tissue:	Lymphoid tissue
Frozen Sample ID:	FR0002992D
Case ID:	CU0000006842
Prep:	2
Vial ID:	RN00003A91
Tissue of Origin:	Lymphoid tissue
Site of Finding:	Ileum
Appearance:	Tumor
Sample Diagnosis (from Pathology Verification):	Lymphoma, lymphoplasmacytic
Normal:	0%
Lesional:	5%
Tumor:	89%
Tumor Hypo/Acellular Stroma:	0%
Tumor Hypercellular Stroma:	6%
Necrosis:	0%
Pathology Verification notes from H&E review:	Tumor Stroma (Hypo/Acellular): Fibrosis; Inflammation: Mild Macrophages
Bioanalyzer Ratio (28S/18S):	1.5



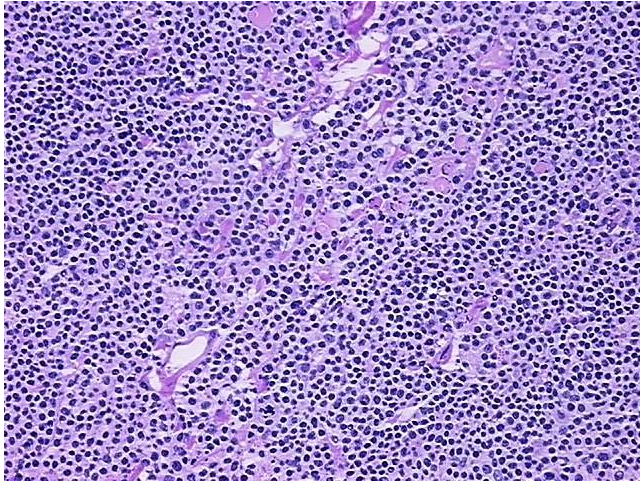
[View online »](#)

CASE Diagnosis (from medical center path report):	Lymphoma, lymphoplasmacytic
Age:	63
Gender:	Male
Tumor Grade:	Not Reported
Minimum Stage Grouping:	IIE
T (Extent of Primary Tumor):	Not applicable
N (Lymph node metastasis):	Not applicable
M (Distant metastasis):	Not applicable
Diagnostic Test Results:	CD3 ~ Leu4 ~ UCHT1 ! by FC,Negative; CD11c ~ Integrin alpha X ~ LeuM5 ! by IHC,Negative; CD19 ~ B4 ~ Leu12 ! by IHC,Positive; CD22 ~ Leu14 ! by IHC,Positive; CD33 ~ My9 ! by IHC,Negative; Kappa light chain ! by IHC,Negative; CD8 ~ Leu2a
Storage:	Store tissue total RNA at -80°C.
Stability:	These products are stable for one year from date of shipping when stored at -80°C without repeated freeze/thaws.

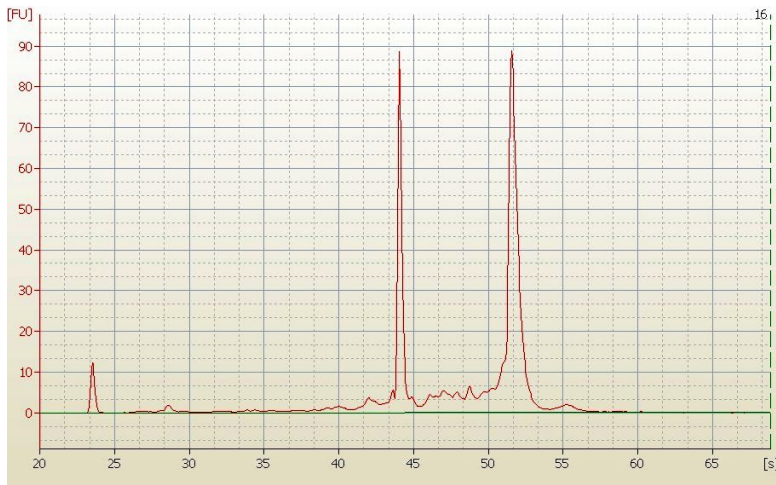
Product images:



4x Image



20x Image



RNA Electropherogram Image



RNA RT-PCR Image