

## Product datasheet for CR562051

### Tissue Total RNA, Ovary

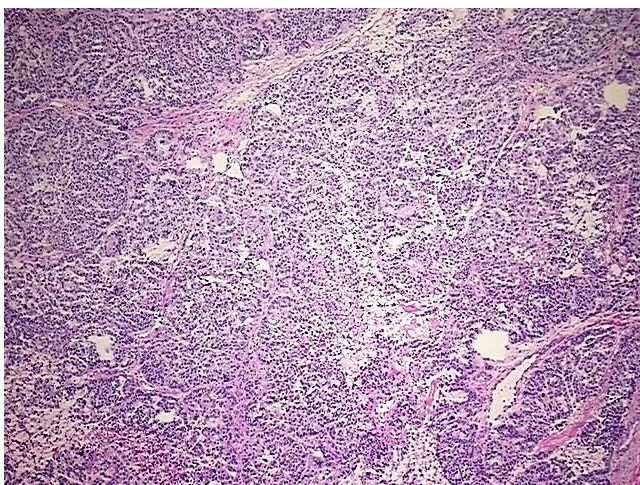
#### Product data:

Product Type:	Total RNA
Disease State:	Cancer
Diagnosis Category:	Ovarian Cancer
Tissue:	Ovary
Frozen Sample ID:	FR00029A73
Case ID:	CU00000006850
Prep:	2
Vial ID:	RN000022A2
Tissue of Origin:	Ovary
Site of Finding:	Omentum
Appearance:	Tumor
Sample Diagnosis (from Pathology Verification):	Adenocarcinoma of ovary, serous, metastatic
Normal:	0%
Lesional:	0%
Tumor:	70%
Tumor Hypo/Acellular Stroma:	20%
Tumor Hypercellular Stroma:	0%
Necrosis:	10%
Bioanalyzer Ratio (28S/18S):	1.41
CASE Diagnosis (from medical center path report):	Adenocarcinoma of ovary, serous
Age:	77

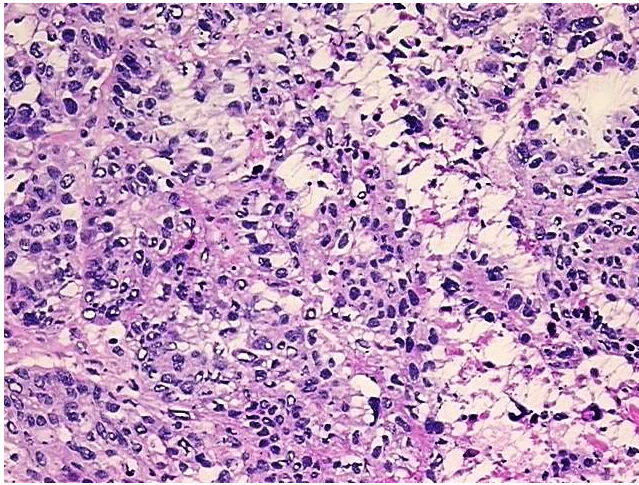

[View online »](#)

<b>Gender:</b>	Female
<b>Tumor Grade:</b>	FIGO G3: Poorly differentiated
<b>Minimum Stage Grouping:</b>	IIIC
<b>T (Extent of Primary Tumor):</b>	T3c
<b>N (Lymph node metastasis):</b>	NX
<b>M (Distant metastasis):</b>	MX
<b>Storage:</b>	Store tissue total RNA at -80°C.
<b>Stability:</b>	These products are stable for one year from date of shipping when stored at -80°C without repeated freeze/thaws.

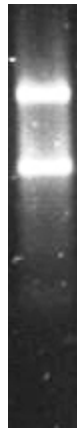
### Product images:



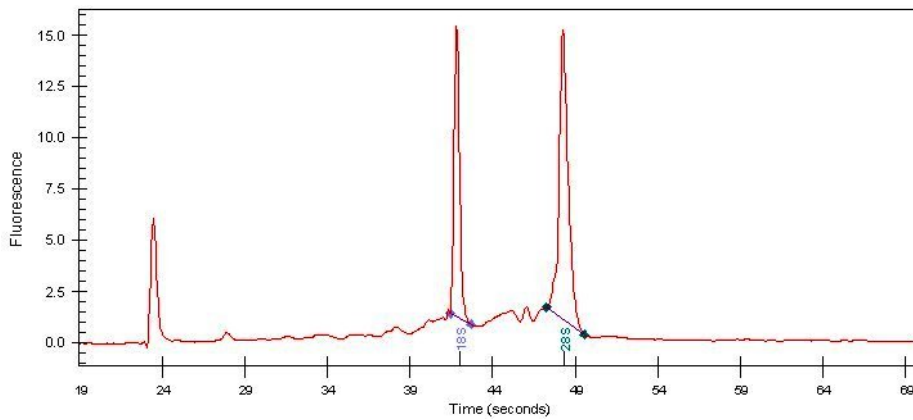
4x Image



20x Image



RNA Gel Image



RNA Electropherogram Image



RNA RT-PCR Image

