

Product datasheet for CR562050

Tissue Total RNA, Lung

Product data:

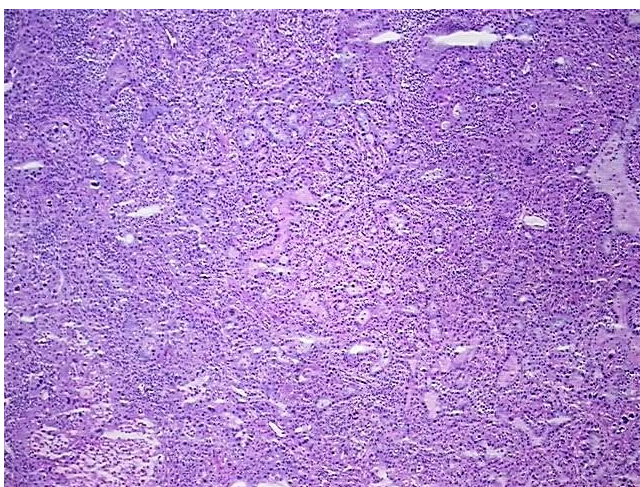
| | |
|---|---|
| Product Type: | Total RNA |
| Disease State: | Cancer |
| Diagnosis Category: | Lung Cancer |
| Tissue: | Lung |
| Frozen Sample ID: | FR5B33B805 |
| Case ID: | CU0000006851 |
| Prep: | 1 |
| Vial ID: | RN00001EAC |
| Tissue of Origin: | Lung |
| Site of Finding: | Lung |
| Appearance: | Tumor |
| Sample Diagnosis (from Pathology Verification): | Adenocarcinoma of lung |
| Normal: | 0% |
| Lesional: | 0% |
| Tumor: | 90% |
| Tumor Hypo/Acellular Stroma: | 5% |
| Tumor Hypercellular Stroma: | 5% |
| Necrosis: | 0% |
| Pathology Verification notes from H&E review: | Tumor Stroma (Cellular): Desmoplastic reaction; Tumor Stroma (Hypo/Acellular): Fibrosis |
| Bioanalyzer Ratio (28S/18S): | 1.44 |



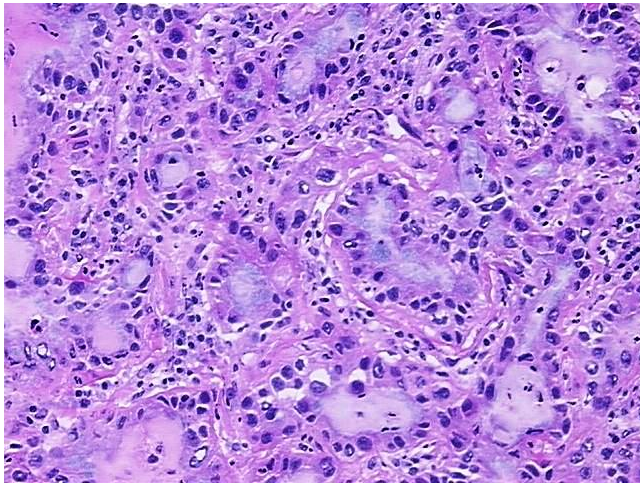
[View online »](#)

| | |
|---|--|
| CASE Diagnosis (from medical center path report): | Adenocarcinoma of lung |
| Age: | 64 |
| Gender: | Female |
| Tumor Grade: | AJCC G2: Moderately differentiated |
| Minimum Stage Grouping: | IB |
| T (Extent of Primary Tumor): | T2 |
| N (Lymph node metastasis): | N0 |
| M (Distant metastasis): | MX |
| Storage: | Store tissue total RNA at -80°C. |
| Stability: | These products are stable for one year from date of shipping when stored at -80°C without repeated freeze/thaws. |

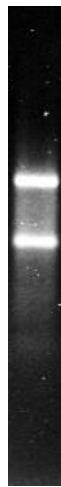
Product images:



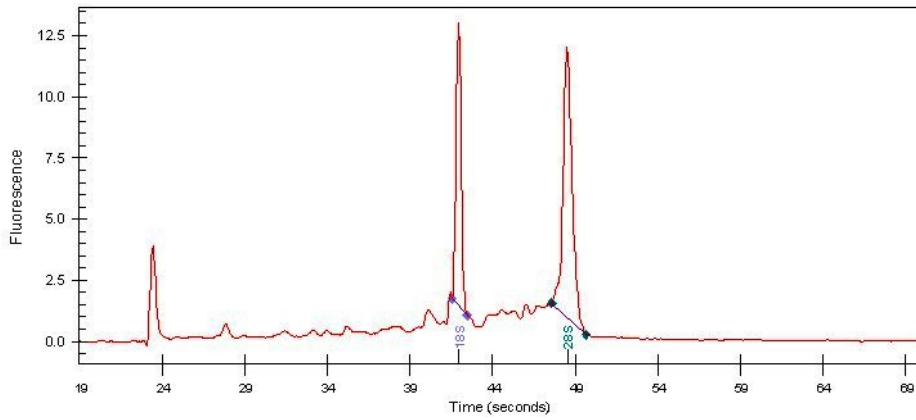
4x Image



20x Image



RNA Gel Image



RNA Electropherogram Image



RNA RT-PCR Image