

Product datasheet for **CR562047**

Tissue Total RNA, Kidney

Product data:

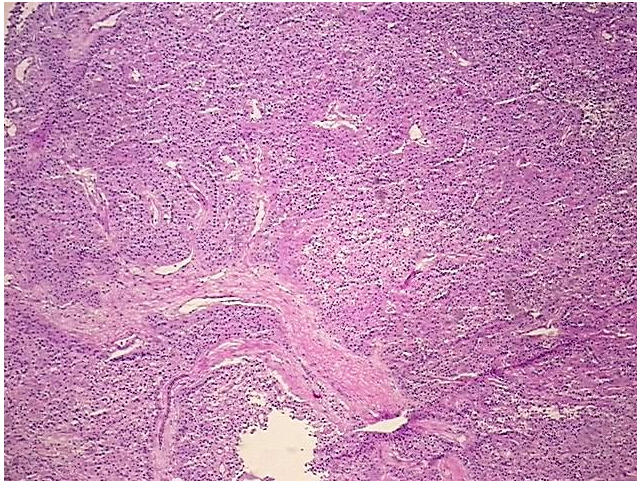
Product Type:	Total RNA
Disease State:	Cancer
Diagnosis Category:	Renal Cell Carcinoma
Tissue:	Kidney
Frozen Sample ID:	FR00028728
Case ID:	CU0000009316
Prep:	1
Vial ID:	RN00001A29
Tissue of Origin:	Kidney
Site of Finding:	Kidney
Appearance:	Tumor
Sample Diagnosis (from Pathology Verification):	Carcinoma of kidney, renal cell, papillary
Normal:	0%
Lesional:	0%
Tumor:	90%
Tumor Hypo/Acellular Stroma:	0%
Tumor Hypercellular Stroma:	10%
Necrosis:	0%
Pathology Verification notes from H&E review:	Tumor Stroma (Hypo/Acellular): Fibrosis
Bioanalyzer Ratio (28S/18S):	1.43



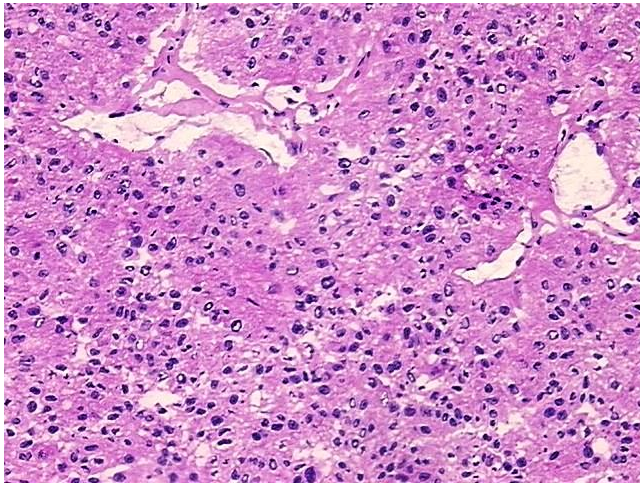
[View online »](#)

CASE Diagnosis (from medical center path report):	Carcinoma of kidney, renal cell, papillary
Age:	64
Gender:	Male
Tumor Grade:	Fuhrman G3: Nuclei very irregular
Minimum Stage Grouping:	III
T (Extent of Primary Tumor):	T3b
N (Lymph node metastasis):	NX
M (Distant metastasis):	MX
Diagnostic Test Results:	Cytokeratin 7 ~ CK7 ! by IHC,Negative
Storage:	Store tissue total RNA at -80°C.
Stability:	These products are stable for one year from date of shipping when stored at -80°C without repeated freeze/thaws.

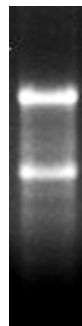
Product images:



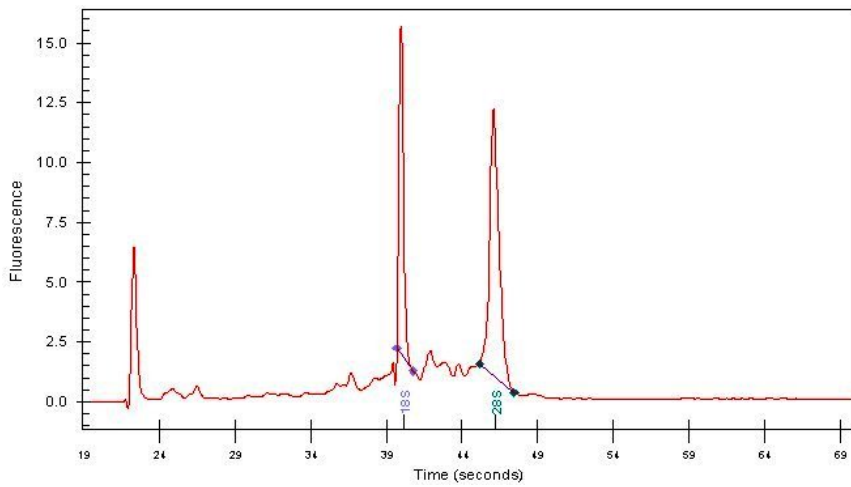
4x Image



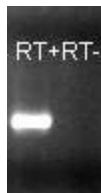
20x Image



RNA Gel Image



RNA Electropherogram Image



RNA RT-PCR Image