

## Product datasheet for CR562042

### Tissue Total RNA, Lymphoid tissue

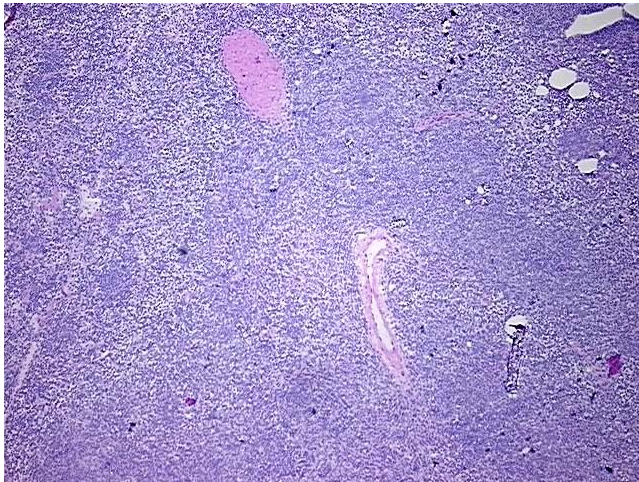
#### Product data:

Product Type:	Total RNA
Disease State:	Cancer
Diagnosis Category:	Lymphoma
Tissue:	Lymphoid tissue
Frozen Sample ID:	FR5B339453
Case ID:	CU0000006554
Prep:	1
Vial ID:	RN00001763
Tissue of Origin:	Lymphoid tissue
Site of Finding:	Spleen
Appearance:	Tumor
Sample Diagnosis (from Pathology Verification):	Lymphoma, mantle cell
Normal:	40%
Lesional:	0%
Tumor:	60%
Tumor Hypo/Acellular Stroma:	0%
Tumor Hypercellular Stroma:	0%
Necrosis:	0%
Bioanalyzer Ratio (28S/18S):	1.8
CASE Diagnosis (from medical center path report):	Lymphoma, mantle cell
Age:	52

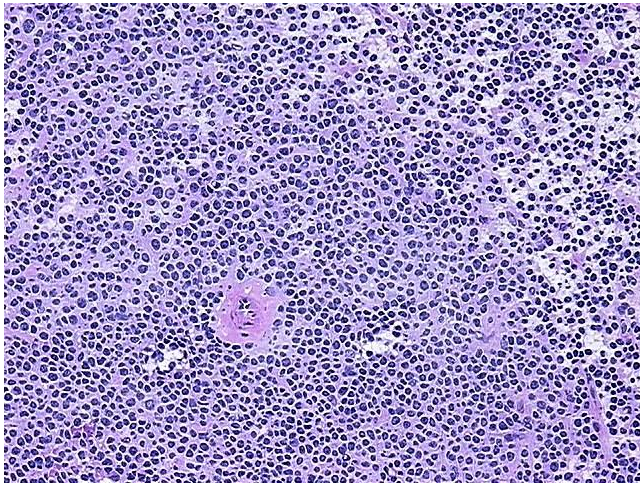


[View online »](#)

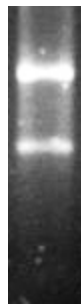
Gender:	Male
Tumor Grade:	Not Reported
Minimum Stage Grouping:	IIE
T (Extent of Primary Tumor):	Not applicable
N (Lymph node metastasis):	Not applicable
M (Distant metastasis):	Not applicable
Diagnostic Test Results:	CD3 ~ Leu4 ~ UCHT1 ! by IHC,Negative; Chromosome structure,Translocation; HLA-(DR, DP, DQ) ~ MHC class II ~ Human major histocompatibility class II antigens ! by IHC,Positive; CD11c ~ Integrin alpha X ~ LeuM5 ! by IHC,Negative; CD19 ~ B4 ~
Storage:	Store tissue total RNA at -80°C.
Stability:	These products are stable for one year from date of shipping when stored at -80°C without repeated freeze/thaws.

**Product images:**

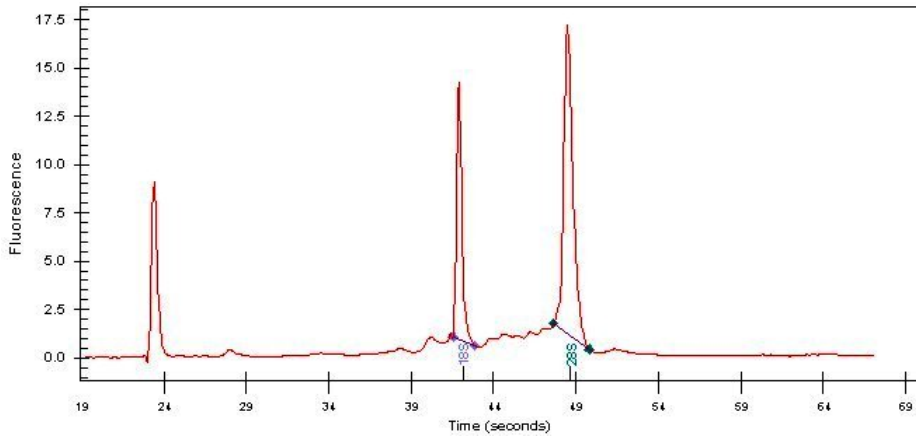
4x Image



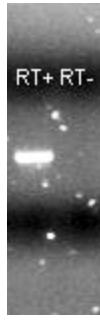
20x Image



RNA Gel Image



RNA Electropherogram Image



RNA RT-PCR Image