

Product datasheet for CR562012

Tissue Total RNA, Breast

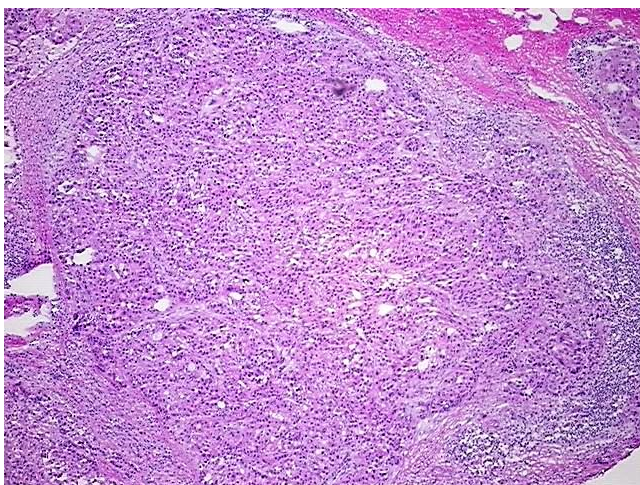
Product data:

Product Type:	Total RNA
Disease State:	Cancer
Diagnosis Category:	Breast Cancer
Tissue:	Breast
Frozen Sample ID:	FR00025337
Case ID:	CU0000006735
Prep:	2
Vial ID:	RN00002592
Tissue of Origin:	Breast
Site of Finding:	Breast
Appearance:	Tumor
Sample Diagnosis (from Pathology Verification):	Adenocarcinoma of breast, ductal
Normal:	5%
Lesional:	0%
Tumor:	80%
Tumor Hypo/Acellular Stroma:	10%
Tumor Hypercellular Stroma:	5%
Necrosis:	0%
Bioanalyzer Ratio (28S/18S):	0.66
CASE Diagnosis (from medical center path report):	Adenocarcinoma of breast, ductal
Age:	52

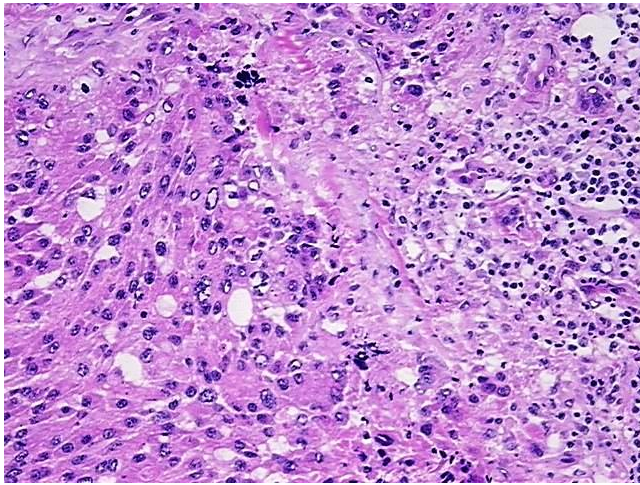


[View online »](#)

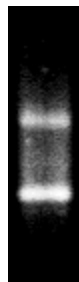
Gender:	Female
Tumor Grade:	Nottingham G3: 8-9 points High combined grade (unfavorable)
Minimum Stage Grouping:	IIA
T (Extent of Primary Tumor):	T1c
N (Lymph node metastasis):	N1a
M (Distant metastasis):	MX
Storage:	Store tissue total RNA at -80°C.
Stability:	These products are stable for one year from date of shipping when stored at -80°C without repeated freeze/thaws.

Product images:

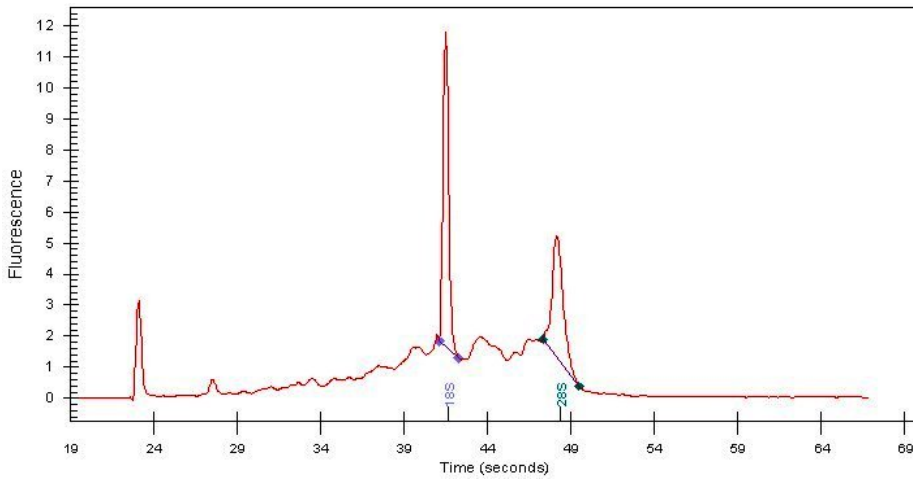
4x Image



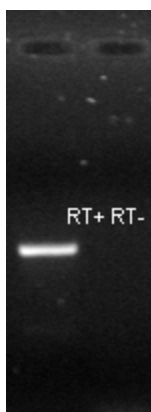
20x Image



RNA Gel Image



RNA Electropherogram Image



RNA RT-PCR Image