

## Product datasheet for CR561984

### Tissue Total RNA, Lymphoid tissue

#### Product data:

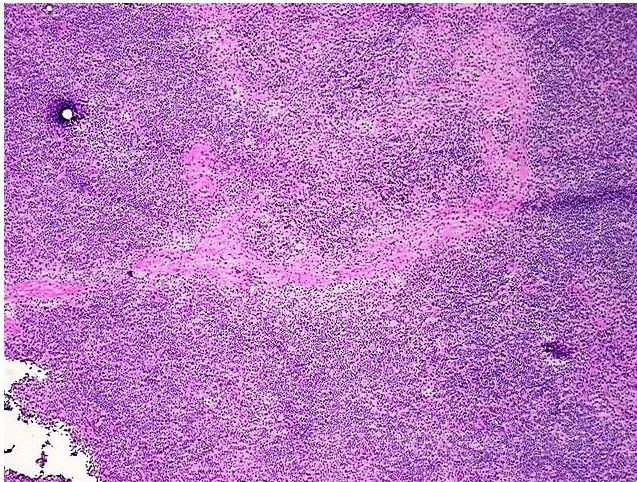
Product Type:	Total RNA
Disease State:	Cancer
Diagnosis Category:	Lymphoma
Tissue:	Lymphoid tissue
Frozen Sample ID:	FR00041039
Case ID:	CU0000014803
Prep:	1
Vial ID:	RN00002C7F
Tissue of Origin:	Lymphoid tissue
Site of Finding:	Lymph node
Appearance:	Tumor
Sample Diagnosis (from Pathology Verification):	Lymphoma, anaplastic large cell
Normal:	10%
Lesional:	0%
Tumor:	80%
Tumor Hypo/Acellular Stroma:	10%
Tumor Hypercellular Stroma:	0%
Necrosis:	0%
Bioanalyzer Ratio (28S/18S):	1.68
CASE Diagnosis (from medical center path report):	Lymphoma, anaplastic large cell
Age:	58



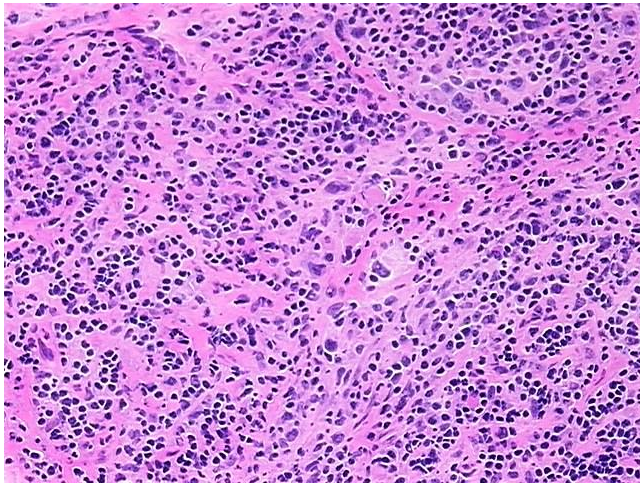
[View online »](#)

Gender:	Male
Tumor Grade:	See pathology report
Minimum Stage Grouping:	I
T (Extent of Primary Tumor):	Not applicable
N (Lymph node metastasis):	Not applicable
M (Distant metastasis):	Not applicable
Diagnostic Test Results:	ALK1 ~ NPM-ALK fusion ~ p80 ! by IHC,Negative; CD227 ~ MUC1 ~ EMA ~ CA15-3 ! by IHC,Negative; CD3 ~ Leu4 ~ UCHT1 ! by IHC,Positive, focal; Vimentin ~ VIM ! by IHC,Negative; CD15 ~ Lewis X ~ Leu M1 ! by IHC,Positive, focal; CD79a ~ Ig
Storage:	Store tissue total RNA at -80°C.
Stability:	These products are stable for one year from date of shipping when stored at -80°C without repeated freeze/thaws.

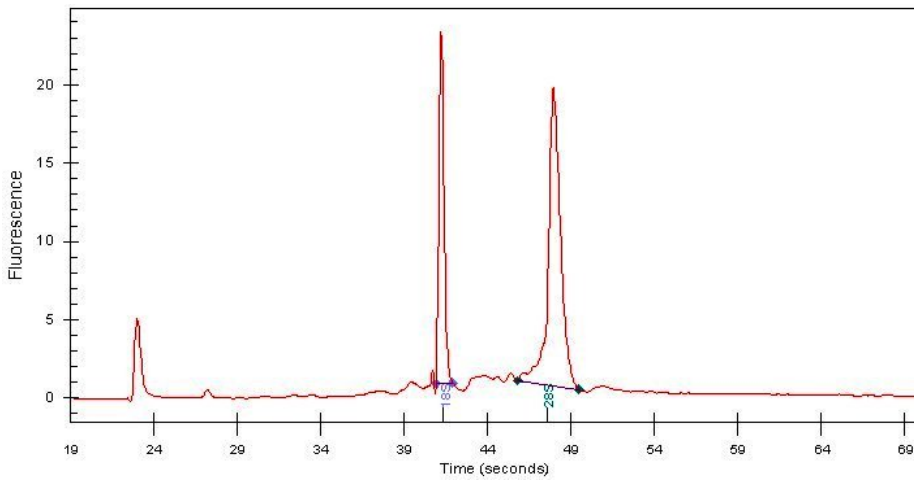
### Product images:



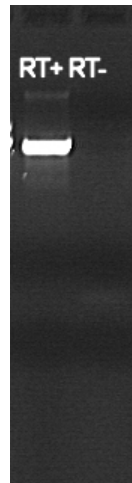
4x Image



20x Image



RNA Electropherogram Image



RNA RT-PCR Image