

Product datasheet for CR561978

Tissue Total RNA, Ovary: bilateral

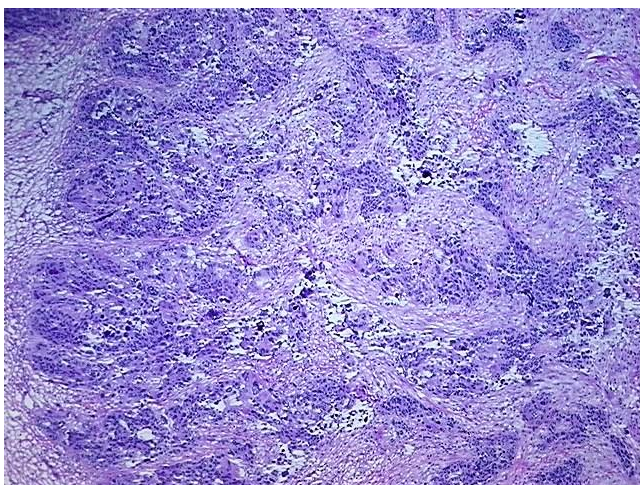
Product data:

Product Type:	Total RNA
Disease State:	Cancer
Diagnosis Category:	Ovarian Cancer
Tissue:	Ovary
Frozen Sample ID:	FR0003683B
Case ID:	CU0000014681
Prep:	1
Vial ID:	RN000033D4
Tissue of Origin:	Ovary: bilateral
Site of Finding:	Ovary: right
Appearance:	Tumor
Sample Diagnosis (from Pathology Verification):	Adenocarcinoma of ovary, papillary serous
Normal:	0%
Lesional:	0%
Tumor:	65%
Tumor Hypo/Acellular Stroma:	0%
Tumor Hypercellular Stroma:	35%
Necrosis:	0%
Bioanalyzer Ratio (28S/18S):	1.53
CASE Diagnosis (from medical center path report):	Adenocarcinoma of ovary, papillary serous
Age:	58

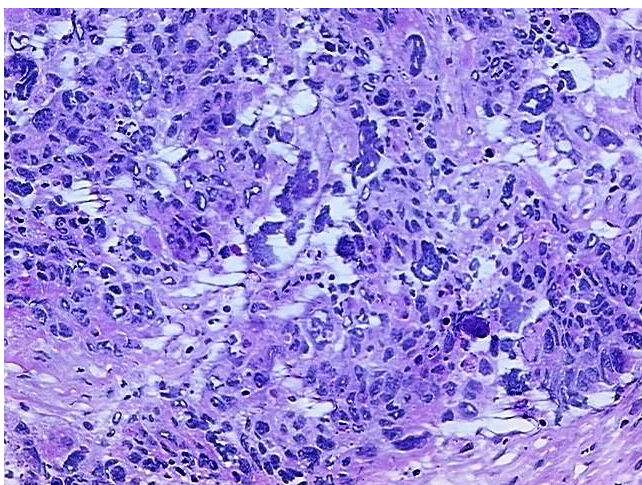


[View online »](#)

Gender:	Female
Tumor Grade:	FIGO G2: Moderately differentiated
Minimum Stage Grouping:	IIB
T (Extent of Primary Tumor):	T2b
N (Lymph node metastasis):	N0
M (Distant metastasis):	MX
Storage:	Store tissue total RNA at -80°C.
Stability:	These products are stable for one year from date of shipping when stored at -80°C without repeated freeze/thaws.

Product images:

4x Image



20x Image